

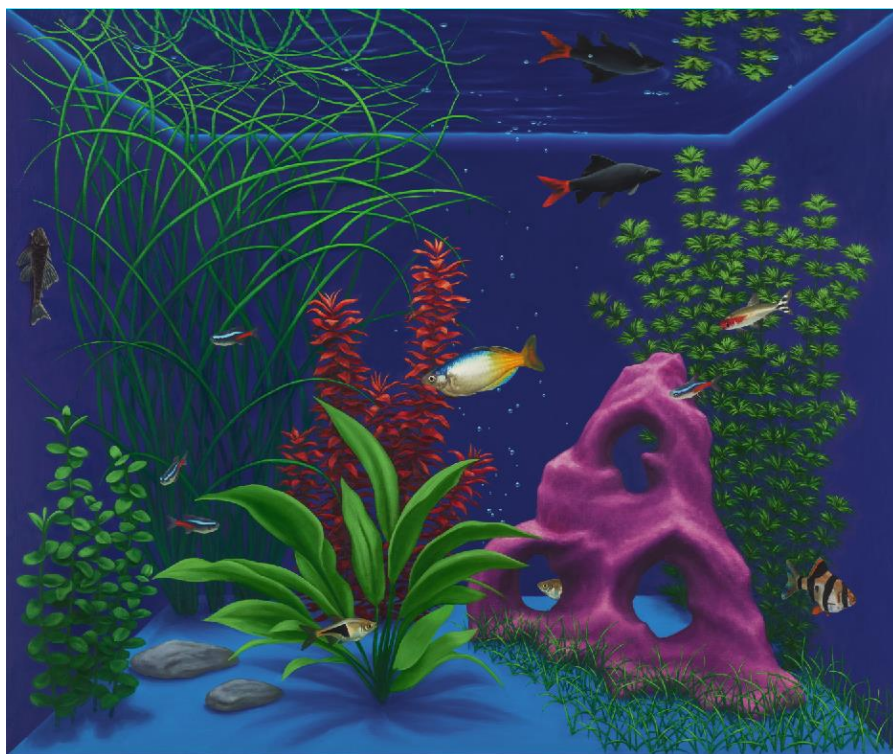
# WHITNEY

Whitney Museum  
of American Art  
Press Office

99 Gansevoort Street  
New York, NY 10014

pressoffice@whitney.org  
(212) 570-3633

## PRESS RELEASE



Mathew Cerletty, *Shelf Life*, 2015. Oil on canvas, 50 x 60 in. (127 x 152.4 cm). Courtesy the artist and Office Baroque, Brussels. Photograph by EPW Studio, New York

### Whitney Announces Two Upcoming Shows Featuring Emerging Artists

**NEW YORK, December 14, 2015**—A pair of group exhibitions featuring the work of emerging artists will go on view at the Whitney Museum of American Art in the first half of 2016. These shows both examine off-kilter and stagey approaches to representation as a means of exploring pressing social issues. The first exhibition, *Flatlands*, highlights recent paintings that provoke a sense of reality as illusion or subjective construction. It will run from January 14 through April 17, 2016, in the John R. Eckel Jr. Foundation Gallery on the first floor, which is free to the public. The second show, *Mirror Cells*, on view from May 13 to August 21, 2016, will present a single, surreal landscape of sculptures and installations in the eighth-floor Robert J. Hurst Galleries with works that allude to both an otherworldly environment and societal concerns.

“Since its founding, the Whitney has been a pioneering advocate of young artists and a vital testing ground for new tendencies in art,” said Scott Rothkopf, the Whitney’s Deputy Director for Programs and Nancy and Steve Crown Family Chief Curator. “In our downtown home, we’re committed to reenergizing this important strand of our program, which we recently relaunched with the first American solo shows of Jared Madere and Rachel Rose, as well as our New Theater residency and billboard installation by Njideka Akunyili Crosby. *Flatlands* and *Mirror Cells* will mark the museum debuts for several artists, and will be followed by the premiere of a video installation by Sophia Al-Maria in her first museum solo show in the country. These exhibitions demonstrate that we want to introduce not only new talents but new frameworks for thinking about contemporary art.”

## **FLATLANDS**

January 14–April 17, 2016

Featuring paintings by Nina Chanel Abney, Mathew Cerletty, Jamian Juliano-Villani, Caitlin Keogh, and Orion Martin, this exhibition highlights the unique ways these artists approach reality in their work. Through a range of techniques, styles, and subject matter, the paintings that will be on view conjure a sense of space that is reminiscent of the illusionistic scenery flats used on stage and movie sets. These artists fill their compositions with objects, bodies, and places that are based on reality, yet are distorted through exaggeration, recontextualization, simplification, or flattening. The individual works are imbued with both the anxiety and uncertainty of our sociopolitical moment as well as the seductive quality of consumerism and physical attraction. *Flatlands* is curated by Laura Phipps and Elisabeth Sherman, assistant curators at the Whitney.

### **About the artists**

**Nina Chanel Abney** (b. 1982, Chicago, IL; lives and works in New Jersey) received her MFA from Parsons School of Design in New York. Abney recently had a solo show at Kravets-Wehby, New York. Abney is included in *30 Americans*, organized by the Rubell Collection and currently at the Detroit Institute of Fine Arts, New York. A solo survey show, organized by the Nasher Museum of Art at Duke University, is forthcoming.

**Mathew Cerletty** (b. 1980, Milwaukee, WI; lives and works in New York) received his BFA at Boston University and has had recent solo shows at Office Baroque, Brussels, and Blum and Poe, Los Angeles. He has been included in group shows at Anton Kern Gallery, New York, and the Museum of Contemporary Art, San Diego.

**Jamian Juliano-Villani** (b. 1987, Newark, NJ; lives and works in New York) received her BFA from Rutgers University in New Jersey. This fall, Juliano-Villani was included in *Greater New York* at MoMA PS1 and *Unorthodox* at The Jewish Museum. She has had recent solo shows at Tanya Leighton, Berlin, and JTT, New York.

**Caitlin Keogh** (b. 1982, Spenard, AK; lives and works in New York) received her MFA from Bard College, Annandale-on-Hudson. Keogh recently had a solo show at Mary Boone Gallery, New York, and is included in a three-person exhibition currently on view at Koenig & Clinton.

**Orion Martin** (b. 1988, 1988, Sonoma, CA, lives and works in Los Angeles, CA) received his BFA at the School of the Art Institute of Chicago. Martin had recent a solo show at Favorite Goods, Los Angeles, and has been included in group exhibitions at Nicelle Beauchene Gallery, New York, and Bodega, New York. His solo show at Bodega, New York, is forthcoming.

## **MIRROR CELLS**

May 13–August 21, 2016

This exhibition brings together artists Liz Craft, Rochelle Goldberg, Elizabeth Jaeger, Maggie Lee, and Win McCarthy, who often conceive of interconnected works that suggest strange invented worlds. While each artist creates discrete objects, these works act in direct dialogue with one another—at times alluding to furniture or other functional items—in order to generate a broader context that extends beyond their individual physical forms. They often make use of humble materials such as wood, resin, and ceramic clay, putting a renewed emphasis on the act of making and materiality. The exhibition's installation on the eighth floor will take on an otherworldly quality by using the galleries as a single, surreal landscape.

The title *Mirror Cells* references mirror neurons, specialized brain cells that are activated when observing the behavior of others. Researchers have theorized that these cells allow us to feel the joy and pain of others and associate them with understanding human intention and feelings of empathy. Accordingly, the works presented in the exhibition are often made as empathetic responses to events such as the loss of a loved one, preoccupations of a particular community, or changes that impact the world more broadly. Referencing both fantasy and real-life experience, they address broad concerns like inequality and climate change as well as more personal narratives connected to trauma and loss.

*Mirror Cells* is organized by Whitney associate curators Christopher Y. Lew and Jane Panetta.

### About the artists

Liz Craft (b. 1970 Los Angeles, CA; lives and works in Los Angeles) received a MFA from the University of California, Los Angeles. Craft has exhibited widely at institutions including the Hammer Museum, Los Angeles; Migros Museum, Zurich; Los Angeles County Museum of Art, Los Angeles; and the Whitney Museum of American Art. Recent solo gallery exhibitions include shows at Jenny's, Los Angeles (2015) and Truth and Consequences, Geneva (2015).

**Rochelle Goldberg** (b. 1984, Vancouver, Canada; lives and works in Brooklyn, NY) received an MFA from Bard College, Annandale-on-Hudson. Goldberg's sculptural installations have been on view at the Sculpture Center, The Swiss Institute, Murray Guy, Bed-Stuy Love Affair, and Eli Ping Frances Perkins all in New York; Federico Vavassori, Milan; Freedman Fitzpatrick, Los Angeles; and Plymouth Rock, Zurich.

**Elizabeth Jaeger** (b. 1988, San Francisco; lives and works in Brooklyn, NY) holds a BA from Lewis and Clark College in Portland, Oregon. Her sculptural works were featured in solo exhibitions at And Now, Dallas, as well as Jack Hanley Gallery, and Eli Ping Frances Perkins, both in New York. Jaeger co-founded and operates *Peradam*, a publishing house specializing in small-run artists' books.

**Maggie Lee** (b. 1987, Westfield, NJ; lives and works in Brooklyn, NY) received her BFA from Pratt University in Brooklyn, NY. Her practice, based on personal experiences and narratives, often incorporates new media and collage. Lee has been included in group exhibitions at Greene Naftali and Real Fine Arts in New York and screened her first feature-length film, *Mommy*, at Anthology Film Archives, New York, and more recently at 356 Mission, Los Angeles.

**Win McCarthy** (b. 1986 Brooklyn, NY; lives and works in Brooklyn, NY) received a BA from Bard College, Annandale-on-Hudson. McCarthy's sculptural installations are often imbued with ideas of personal representation. McCarthy has had solo exhibitions at Off Vendome in New York and Dusseldorf and has been included in recent group exhibitions at Murray Guy, James Fuentes, Bed-Stuy Love Affair, and the Sculpture Center in New York.

### Exhibition Support

Major support for *Flatlands* is provided by John R. Eckel Jr. Foundation.

Additional support is provided by Liz and Jonathan Goldman.

Generous support for *Mirror Cells* is provided by Jackson Tang

## About the Whitney

The Whitney Museum of American Art, founded in 1930 by the artist and philanthropist Gertrude Vanderbilt Whitney (1875–1942), houses the foremost collection of American art from the twentieth and twenty-first centuries. Mrs. Whitney, an early and ardent supporter of modern American art, nurtured groundbreaking artists at a time when audiences were still largely preoccupied with the Old Masters. From her vision arose the Whitney Museum of American Art, which has been championing the most innovative art of the United States for more than eighty years. The core of the Whitney's mission is to collect, preserve, interpret, and exhibit American art of our time and serve a wide variety of audiences in celebration of the complexity and diversity of art and culture in the United States. Through this mission and a steadfast commitment to artists themselves, the Whitney has long been a powerful force in support of modern and contemporary art and continues to help define what is innovative and influential in American art today.

## Current and Upcoming Exhibitions at the Whitney Museum of American Art

<i>The Whitney's Collection</i>	Ongoing
<i>Jared Madere</i>	Through Jan 3, 2016
<i>Archibald Motley: Jazz Age Modernist</i>	Through Jan 17, 2016
<i>Frank Stella: A Retrospective</i>	Through Feb 7, 2016
<i>Rachel Rose: Everything and More</i>	Through Feb 7, 2016
<i>Collected by Thea Westreich Wagner and Ethan Wagner</i>	Through Mar 6, 2016
<i>Flatlands</i>	Jan 14–April 10, 2016
<i>Laura Poitras: Astro Noise</i>	Feb 5–May 1, 2016
<i>Open Plan</i>	Feb 26–May 14, 2016
<i>Mirror Cells</i>	May 13–August 21, 2016
<i>Stuart Davis: In Full Swing</i>	June 10–Sept 25, 2016
<i>Danny Lyon: Message to the Future</i>	June 17–Sept 25, 2016
<i>Sophia Al-Maria</i>	Summer 2016
<i>Carmen Herrera</i>	Fall 2016
<i>David Wojnarowicz</i>	Fall 2016/Winter 2017
<i>Whitney Biennial</i>	Spring 2017

The Whitney Museum is located at 99 Gansevoort Street between Washington and West Streets, New York City. Museum hours are: Monday, Wednesday, Thursday and Sunday from 10:30 am to 6 pm, Friday and Saturday from 10:30 am to 10 pm, closed Tuesday. General admission: \$22. Full-time students and 65 & over: \$18. Visitors under 18 and Whitney members: FREE. Admission is pay-what-you-wish on Fridays, 7–10 p.m. For general information, please call (212) 570-3600 or visit [whitney.org](http://whitney.org).

###