

Amy Sherald: American Sublime

Whitney Museum of American Art

April 9–August 2025

These images are approved only for publication in conjunction with the promotion of *Amy Sherald: American Sublime* solarized, overlaid with other matter (e.g., tone, text, another image, etc.), or otherwise altered, except as to overall size. Reproductions must include the full caption information adjacent to the image. Download high-resolution image files on the Whitney press site.

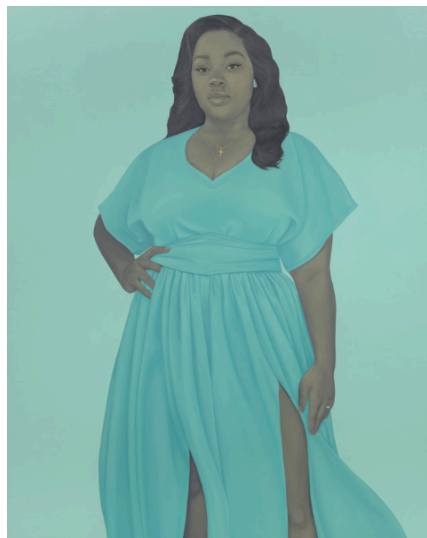


Amy Sherald, *Michelle LaVaughn Robinson Obama*, 2018. Oil on linen, 72 1/8 × 60 1/8 × 2 3/4 in. (183.1 × 152.7 × 7 cm). National Portrait Gallery, Smithsonian Institution. The National Portrait Gallery is grateful to the following lead donors for their support of the Obama portraits: Kate Capshaw and Steven Spielberg; Judith Kern and Kent Whealy; Tommie L. Pegues and Donald A. Capoccia. Courtesy of the Smithsonian's National Portrait Gallery



Amy Sherald, *If You Surrendered to the Air, You Could Ride It*, 2019. Oil on linen, 130 × 108 × 2 1/2 in. (330.2 × 274.3 × 6.4 cm). Whitney Museum of American Art, New York; purchase with funds from the Painting and Sculpture Committee, Sascha S. Bauer, Jack Cayre, Nancy Carrington Crown, Nancy Poses, Laura Rapp, and Elizabeth Redleaf 2020.148. © Amy Sherald. Photograph by Joseph Hyde

Publicity Image Sheet



Amy Sherald, *Breonna Taylor*, 2020. Oil on linen, 54 × 43 × 2 1/2 in. The Speed Art Museum, Louisville, Kentucky, Museum, purchase made possible by a grant from the Ford Foundation; and the Smithsonian National Museum of African American History and Culture, purchase made possible by a gift from Kate Capshaw © Amy Sherald. Photograph by Joseph Hyde

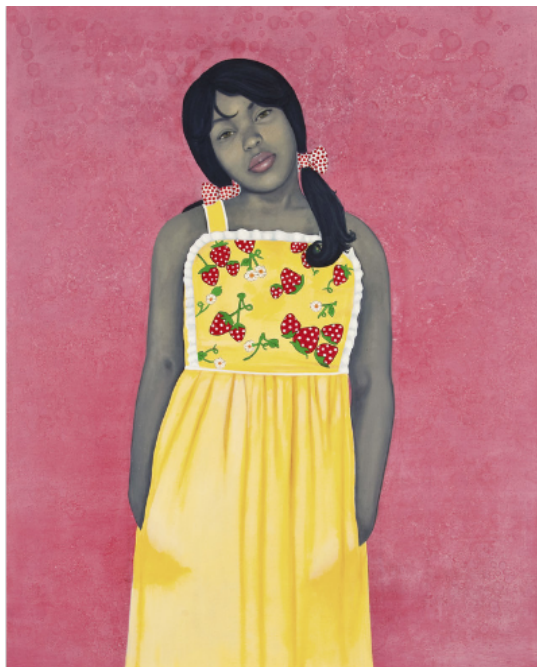


Amy Sherald, *What's precious inside of him does not care to be known by the mind in ways that diminish its presence (All American)*, 2017. Oil on canvas, 54 × 43 × 2 1/2 in. (137.16 × 109.22 × 6.35 cm). Private collection, courtesy Monique Meloche Gallery. © Amy Sherald. Courtesy the artist and Hauser & Wirth. Photograph by Joseph Hyde

Publicity Image Sheet



Amy Sherald, *Miss Everything (Unsuppressed Deliverance)*, 2014. Oil on canvas, 54 × 43 × 2 1/2 in. (137.16 × 109.22 × 6.35 cm). Private Collection. © Amy Sherald. Courtesy the artist and Hauser & Wirth. Photograph by Joseph Hyde



Amy Sherald, *They Call Me Redbone, but I'd Rather Be Strawberry Shortcake*, 2009. Oil on canvas, 54 × 43 × 2 1/2 in. (137.16 × 109.22 × 6.35 cm). National Museum of Women in the Arts, Washington, DC, gift of Steven Scott, Baltimore, in honor of the artist and the 25th anniversary of National Museum of Women in the Arts. © Amy Sherald. Courtesy the artist and Hauser & Wirth. Photograph by Ryan Stevenson

Publicity Image Sheet



Amy Sherald, *The Bathers*, 2015. Oil on canvas, 72 1/8 × 67 × 2 1/2 in. (183.2 × 170.2 cm). Private Collection. © Amy Sherald. Courtesy the artist and Hauser & Wirth. Photograph by Joseph Hyde



Amy Sherald, *Saint Woman*, 2015. Oil on canvas, 54 × 43 × 2 1/2 in. (137.16 × 109.22 × 6.35 cm). Private collection, courtesy Monique Meloche Gallery and Hauser & Wirth. © Amy Sherald. Courtesy the artist and Hauser & Wirth. Photograph by Joseph Hyde

Publicity Image Sheet



Amy Sherald, *Planes, Rockets, and the Spaces in Between*, 2018. Oil on canvas, 100 x 67 x 2 1/2 in. (254 x 170.1 x 6.35 cm). Baltimore Museum of Art, Purchase with exchange funds from the Pearlstone Family Fund and partial gift of The Andy Warhol Foundation for the Visual Arts, Inc., BMA 2018.80. © Amy Sherald. Courtesy the artist and Hauser & Wirth. Photograph by Joseph Hyde



Amy Sherald, *The Rabbit in the Hat*, 2009. Oil on canvas, 54 x 43 x 2 1/2 in. (137.16 x 109.22 x 6.35 cm). Green Family Art Foundation, courtesy Adam Green Art Advisory. © Amy Sherald. Courtesy the artist and Hauser & Wirth. Photograph by Christina Hussey

Publicity Image Sheet



Amy Sherald, *Listen, you a wonder. You a city of a woman. You got a geography of your own*, 2016. Oil on canvas, 54 × 43 × 2 1/2 in. (137.16 × 109.22 × 6.35 cm). Collection of Rashid Johnson and Sheree Hovsepian. © Amy Sherald. Courtesy the artist and Hauser & Wirth. Photograph by Joseph Hyde



Amy Sherald, *Hangman*, 2007. Oil on canvas, 100 × 67 × 2 1/2 in. (254 × 170.18 × 6.35 cm). Collection of Sheryll Cashin and Marque Chambliss. © Amy Sherald. Courtesy the artist and Hauser & Wirth. Photograph by Kelvin Bulluck

Publicity Image Sheet



Amy Sherald, *For Love, and for Country*, 2022. Oil on linen, 123 1/4 × 93 1/8 × 2 1/2 in. (313 × 236.5 × 6.4 cm). San Francisco Museum of Modern Art, Purchase, by exchange, through a gift of Helen and Charles Schwab. © Amy Sherald. Courtesy the artist and Hauser & Wirth. Photograph by Joseph Hyde



Amy Sherald, *A Midsummer Afternoon Dream*, 2021. Oil on canvas, 106 × 101 × 2 1/2 in. (269.24 × 256.54 × 6.35cm). Private Collection. © Amy Sherald. Courtesy the artist and Hauser & Wirth. Photograph by Joseph Hyde

Publicity Image Sheet



Amy Sherald, *As Soft as She Is...*, 2022. Oil on linen, 54 × 43 × 2 1/2 in. (137.16 × 109.22 × 6.35 cm). Tate, purchased with funds provided by the Tymure Collection. © Amy Sherald. Courtesy the artist and Hauser & Wirth. Photograph by Joseph Hyde



Amy Sherald, *She had an inside and an outside now, and suddenly she knew how not to mix them*, 2018. Oil on canvas. 54 × 43 × 2 1/2 in. (137.2 × 109.2 × 6.35 cm). The Nelson-Atkins Museum of Art, Kansas City, Missouri. Lent by Bill and Christy Gautreaux Collection, Kansas City, 21.2023. © Amy Sherald. Image courtesy of Nelson-Atkins Digital Production & Preservation, Gabe Hopkins & Dana Anderson

Publicity Image Sheet



Billboard image. Approved for all MarComms uses



Amy Sherald, *A God Blessed Land (Empire of Dirt)*, 2022. Oil on linen, 96 1/8 × 130 1/8 × 2 1/2 in. (244.1 × 330.2 × 6.35 cm.) Courtesy the Tymure Collection. © Amy Sherald. Photograph by Joseph Hyde



Amy Sherald, *As American as Apple Pie*, 2020. Oil on canvas, 123 × 101 × 2 1/2 in. (312.4 × 256.5 × 6.4 cm). Courtesy that artist and Hauser and Wirth. © Amy Sherald. Photograph by Joseph Hyde

Publicity Image Sheet



Amy Sherald Ecclesia (The Meeting of Inheritance and Horizons), 2024 Oil on linen, three panels 128 x 68 x 2.5in Collection of the artist; courtesy Hauser and Wirth



Amy Sherald, *American Grit*, 2024. Oil on linen, 95 x 76 1/2 x 2 1/2 in. (241.3 x 194.3 x 6.35 cm). Courtesy the artist and Hauser and Wirth. © Amy Sherald. Photograph by Kevin Bulluck

Publicity Image Sheet



Amy Sherald, *Trans Forming Liberty*, 2024. Oil on linen, 123 × 76 1/2 × 2 1/2 in. (312.4 × 194.3 × 6.35 cm). Courtesy the artist and Hauser and Wirth. © Amy Sherald. Photograph by Kevin Bulluck



Amy Sherald, *All Things Bright and Beautiful*, 2016. Oil on canvas, 54 × 43 × 2 1/2 in. (137.16 × 109.22 × 6.35 cm). Collection of Frances and Burton Reifler. © Amy Sherald. Courtesy the artist and Hauser & Wirth. Photograph by Joseph Hyde

Publicity Image Sheet



Amy Sherald, *Handsome*, 2019. Oil on canvas, 54 × 43 × 2 1/2 in. (137.16 × 109.22 × 6.35 cm). Collection of Anderson Cooper. © Amy Sherald. Courtesy the artist and Hauser & Wirth. Photograph by Joseph Hyde



Amy Sherald, *It Made Sense...Mostly in Her Mind*, 2011. Oil on canvas, 54 × 43 × 2 1/2 in. (137.16 × 109.22 × 6.35 cm). Nancy and Sean Cotton Collection. © Amy Sherald. Courtesy the artist and Hauser & Wirth. Photograph by Lowy Art Services

Publicity Image Sheet



Amy Sherald, *Mother and Child*, 2016 Oil on canvas, 54 × 43 × 2 1/2 in. (137.16 × 109.22 × 6.35 cm). Courtesy The Blanchard Nesbitt Family. © Amy Sherald. Courtesy the artist and Hauser & Wirth. Photograph by Joseph Hyde



Amy Sherald, *A Bucket Full of Treasures (Papa Gave Me Sunshine to Put in My Pocket)*, 2020. Oil on linen, 54 × 43 × 2 1/2 in. (137.16 × 109.22 × 6.35 cm). Private collection. © Amy Sherald. Courtesy the artist and Hauser & Wirth. Photograph by Joseph Hyde

Publicity Image Sheet



Amy Sherald, *Mama Has Made the Bread (How Things Are Measured)*, 2018. Oil on canvas, 54 × 43 × 2 1/2 in. (137.16 × 109.22 × 6.35 cm). Private collection. © Amy Sherald. Courtesy the artist and Hauser & Wirth. Photograph by Joseph Hyde



Amy Sherald, *She Always Believed the Good about Those She Loved*, 2018. Oil on canvas, 54 × 43 × 2 1/2 in. (137.16 × 109.22 × 6.35 cm). Private collection, courtesy Monique Meloche Gallery. © Amy Sherald. Courtesy the artist and Hauser & Wirth. Photograph by Joseph Hyde

Publicity Image Sheet



Amy Sherald, *Untitled (Opal)*, 2019, Oil on linen, 54 × 43 × 2 1/2 in. (137.16 × 109.22 × 6.35 cm). Collection of Robert F. Smith. © Amy Sherald. Courtesy the artist and Hauser & Wirth. Photograph by Joseph Hyde



Amy Sherald, *Try on dreams until I find the one that fits me. They all fit me*, 2017. Oil on canvas, 54 × 43 × 2 1/2 in. (137.16 × 109.22 × 6.35 cm). Kemper Museum of Contemporary Art, Kansas City, Missouri, Museum purchase made possible by a gift from the Bebe and Crosby Kemper Foundation. © Amy Sherald. Courtesy the artist and Hauser & Wirth. Photograph by Joseph Hyde