

WHITNEY

Whitney Museum
of American Art

99 Gansevoort Street
New York, NY 10014

whitney.org
info@whitney.org

(212) 570-3600

Pacha, Llaqta, Wasichay: Indigenous Space, Modern Architecture, New Art

July 2018



william cordova

b. 1971, Lima, Peru; lives in Miami, FL, and New York, NY

untitled, 2016

Peruvian cacao on paper

Sheet: 9 1/2 x 7 1/2 in. (24.1 x 19.1 cm)

Framed: 11 1/8 x 9 1/8 in. (28.3 x 23.2 cm)

Collection of the artist; courtesy of Sikkema Jenkins and Co., New York



william cordova

b. 1971, Lima, Peru; lives in Miami, FL, and New York, NY

untitled, 2016

Peruvian cacao on paper

Sheet: 9 1/2 x 7 1/2 in. (24.1 x 19.1 cm)

Framed: 11 1/8 x 9 1/8 in. (28.3 x 23.2 cm)

Collection of the artist; courtesy of Sikkema Jenkins and Co., New York



william cordova

b. 1971, Lima, Peru; lives in Miami, FL, and New York, NY

untitled, 2016

Peruvian cacao on paper

Sheet: 9 1/2 x 7 1/2 in. (24.1 x 19.1 cm)

Framed: 11 1/8 x 9 1/8 in. (28.3 x 23.2 cm)

Collection of the artist; courtesy of Sikkema Jenkins and Co., New York



william cordova

b. 1971, Lima, Peru; lives in Miami, FL, and New York, NY

untitled, 2016

Peruvian cacao on paper

Sheet: 9 1/2 × 7 1/2 in. (24.1 × 19.1 cm)

Framed: 11 1/8 × 9 1/8 in. (28.3 × 23.2 cm)

Collection of the artist; courtesy of Sikkema Jenkins and Co., New York



william cordova

b. 1971, Lima, Peru; lives in Miami, FL, and New York, NY

untitled, 2016

Peruvian cacao on paper

Sheet: 29 × 23 1/4 in. (73.7 × 59.1 cm)

Framed: 31 1/4 × 25 1/8 in. (79.4 × 63.8 cm)

Collection of the artist; courtesy of Sikkema Jenkins and Co., New York



william cordova

b. 1971, Lima, Peru; lives in Miami, FL, and New York, NY

untitled, 2016

Peruvian cacao on paper

Sheet: 29 × 23 1/4 in. (73.7 × 59.1 cm)

Framed: 31 1/4 × 25 1/8 in. (79.4 × 63.8 cm)

Collection of the artist; courtesy of Sikkema Jenkins and Co., New York



william cordova

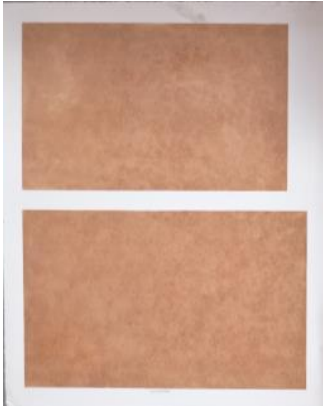
b. 1971, Lima, Peru; lives in Miami, FL, and New York, NY

untitled, 2017–18

Peruvian cacao on paper

Sheet: 7 1/8 × 7 3/4 in. (18.1 × 19.7 cm)

Collection of the artist; courtesy of Sikkema Jenkins and Co., New York



william cordova

b. 1971, Lima, Peru; lives in Miami, FL, and New York, NY

untitled, 2015

Peruvian cacao on paper

Sheet: 29 x 23 in. (73.7 x 58.4 cm)

Collection of the artist; courtesy of Sikkema Jenkins and Co., New York



william cordova

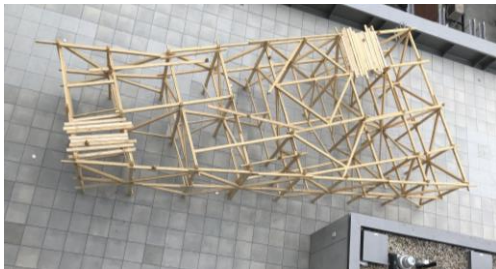
b. 1971, Lima, Peru; lives in Miami, FL, and New York, NY

untitled, 2015–16

Peruvian cacao on paper

Sheet: 29 x 23 in. (73.7 x 58.4 cm)

Collection of the artist; courtesy of Sikkema Jenkins and Co., New York



william cordova

b. 1971, Lima, Peru; lives in Miami, FL, and New York, NY

huaca (sacred geometries), 2018

Wood and stainless steel

Dimensions variable

Collection of the artist; courtesy of Sikkema Jenkins and Co., New York



Livia Corona Benjamín

b. 1975, Ensenada, Mexico; lives in New York, NY, and Mexico City and Ensenada, Mexico

Mazatlpilli, 2018

Pigment inkjet print with turquoise, jade, coral, onyx, obsidian, tiger's eye, and animal bone

30 x 38 in. (76.2 x 96.5 cm)

Collection of the artist



Livia Corona Benjamín

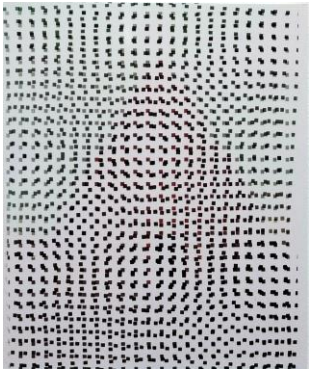
b. 1975, Ensenada, Mexico; lives in New York, NY, and Mexico City and Ensenada, Mexico

Infinite Rewrite L, 2018

Analog photogram on chromogenic paper with aluminum mount on stacked acrylic base

10 7/16 × 8 3/8 × 1 7/16 in. (26.5 × 21.3 × 3.6 cm)

Collection of the artist



Livia Corona Benjamín

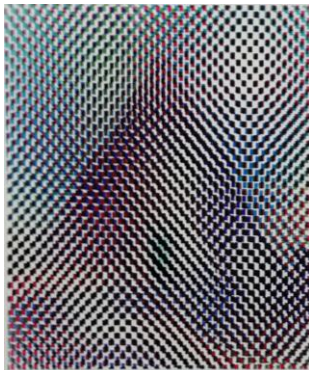
b. 1975, Ensenada, Mexico; lives in New York, NY, and Mexico City and Ensenada, Mexico

Infinite Rewrite LI, 2018

Analog photogram on chromogenic paper with aluminum mount on stacked acrylic base

10 7/16 × 8 3/8 × 1 7/16 in. (26.5 × 21.3 × 3.6 cm)

Collection of the artist



Livia Corona Benjamín

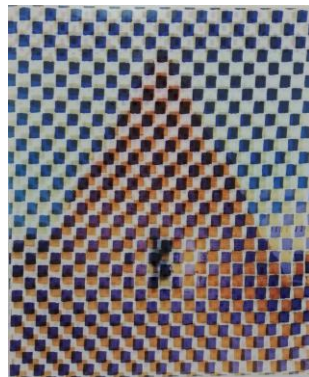
b. 1975, Ensenada, Mexico; lives in New York, NY, and Mexico City and Ensenada, Mexico

Infinite Rewrite LII, 2018

Analog photogram on chromogenic paper with aluminum mount on stacked acrylic base

10 7/16 × 8 3/8 × 1 7/16 in. (26.5 × 21.3 × 3.6 cm)

Collection of the artist



Livia Corona Benjamín

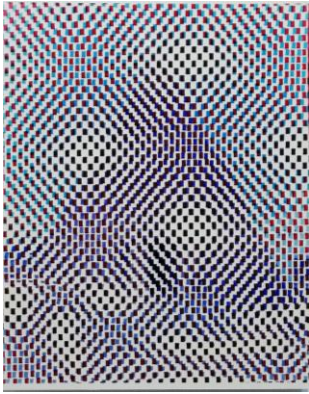
b. 1975, Ensenada, Mexico; lives in New York, NY, and Mexico City and Ensenada, Mexico

Infinite Rewrite LIII, 2018

Analog photogram on chromogenic paper with aluminum mount on stacked acrylic base

10 7/16 × 8 3/8 × 1 7/16 in. (26.5 × 21.3 × 3.6 cm)

Collection of the artist



Livia Corona Benjamín

b. 1975, Ensenada, Mexico; lives in New York, NY, and Mexico City and Ensenada, Mexico

Infinite Rewrite LIV, 2018

Analog photogram on chromogenic paper with aluminum mount on stacked acrylic base

10 7/16 × 8 3/8 × 1 7/16 in. (26.5 × 21.3 × 3.6 cm)

Collection of the artist



Livia Corona Benjamín

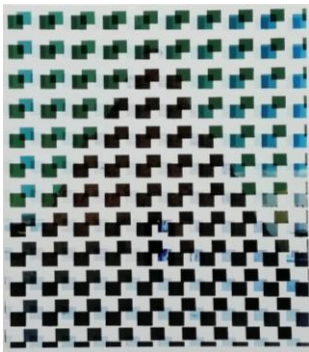
b. 1975, Ensenada, Mexico; lives in New York, NY, and Mexico City and Ensenada, Mexico

Infinite Rewrite LV, 2018

Analog photogram on chromogenic paper with aluminum mount on stacked acrylic base

10 7/16 × 8 3/8 × 1 7/16 in. (26.5 × 21.3 × 3.6 cm)

Collection of the artist



Livia Corona Benjamín

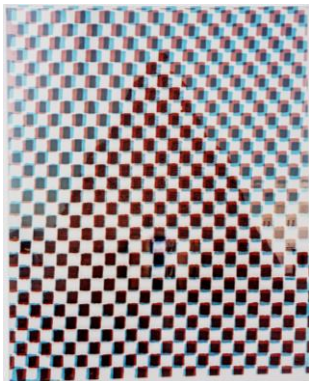
b. 1975, Ensenada, Mexico; lives in New York, NY, and Mexico City and Ensenada, Mexico

Infinite Rewrite LVI, 2018

Analog photogram on chromogenic paper with aluminum mount on stacked acrylic base

10 7/16 × 8 3/8 × 1 7/16 in. (26.5 × 21.3 × 3.6 cm)

Collection of the artist



Livia Corona Benjamín

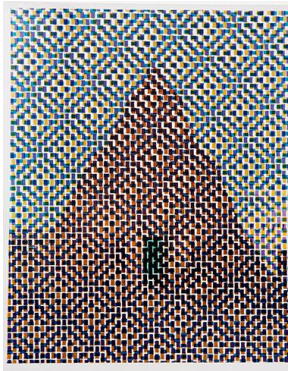
b. 1975, Ensenada, Mexico; lives in New York, NY, and Mexico City and Ensenada, Mexico

Infinite Rewrite XXXI, 2016

Analog photogram on chromogenic paper with aluminum mount on stacked acrylic base

10 7/16 × 8 3/8 × 1 7/16 in. (26.5 × 21.3 × 3.6 cm)

Collection of the artist



Livia Corona Benjamín

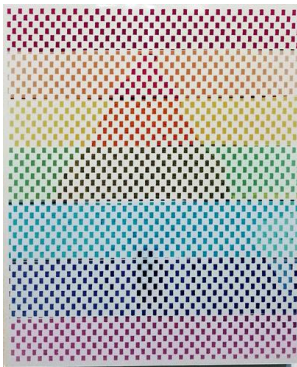
b. 1975, Ensenada, Mexico; lives in New York, NY, and Mexico City and Ensenada, Mexico

Infinite Rewrite XVIII, 2016

Analog photogram on chromogenic paper with aluminum mount on stacked acrylic base

10 7/16 × 8 3/8 × 1 7/16 in. (26.5 × 21.3 × 3.6 cm)

Collection of the artist



Livia Corona Benjamín

b. 1975, Ensenada, Mexico; lives in New York, NY, and Mexico City and Ensenada, Mexico

Infinite Rewrite VI, 2016

Analog photogram on chromogenic paper with aluminum mount on stacked acrylic base

10 7/16 × 8 3/8 × 1 7/16 in. (26.5 × 21.3 × 3.6 cm)

Collection of the artist



Livia Corona Benjamín

b. 1975, Ensenada, Mexico; lives in New York, NY, and Mexico City and Ensenada, Mexico

Huapalcalco / Conversion A, 2018

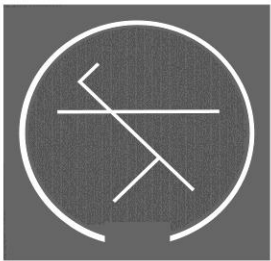
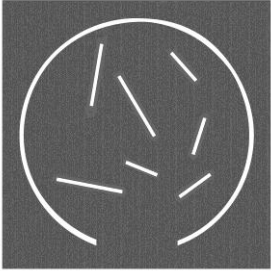
Gelatin silver print and latex and plaster on canvas, two parts

Sheet: 40 × 50 1/2 in. (101.6 × 128.3 cm)

Floorplan: 40 × 40 in. (101.6 × 101.6 cm)

Collection of the artist





Livia Corona Benjamín

b. 1975, Ensenada, Mexico; lives in New York, NY, and Mexico City and Ensenada, Mexico

Rancho Grande / Conversion B, 2018

Gelatin silver print and latex and plaster on canvas, two parts

Sheet: 40 × 50 1/2 in. (101.6 × 128.3 cm)

Floorplan: 40 × 40 in. (101.6 × 101.6 cm)

Collection of the artist

Livia Corona Benjamín

b. 1975, Ensenada, Mexico; lives in New York, NY, and Mexico City and Ensenada, Mexico

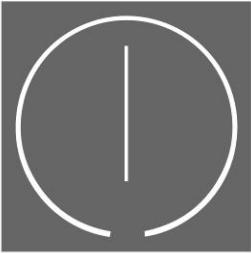
Zoquitl / Conversion C, 2018

Gelatin silver print and latex and plaster on canvas, two parts

Sheet: 40 × 50 1/2 in. (101.6 × 128.3 cm)

Floorplan: 40 × 40 in. (101.6 × 101.6 cm)

Collection of the artist



Livia Corona Benjamín

b. 1975, Ensenada, Mexico; lives in New York, NY, and Mexico City and Ensenada, Mexico

Caballos / Conversion D, 2018

Gelatin silver print and acrylic on canvas, two parts

Sheet: 40 × 50 1/2 in. (101.6 × 128.3 cm)

Floorplan: 40 × 40 in. (101.6 × 101.6 cm)

Collection of the artist



Livia Corona Benjamín

b. 1975, Ensenada, Mexico; lives in New York, NY, and Mexico City and Ensenada, Mexico

Graneros del Pueblo / Nadie Sabe, Nadie Supo, 2016

High-definition video, color, sound; 6 min.

Courtesy the artist



Jorge González

b. 1981, San Juan, Puerto Rico; lives in San Juan, Puerto Rico

Ayacavo Guarocoel, 2018

Enea (cattail) woven on wooden scaffold, dried-clay pieces, photographs, and wooden structure

Dimensions variable

Collection of the artist



Jorge González

b. 1981, San Juan, Puerto Rico; lives in San Juan, Puerto Rico
Banquetas Chévere (Chévere Stools), 2018

Dyed cotton cord on constructed mahogany and blue mahoe wood

Dimensions variable

Collection of the artist; courtesy of KADIST, San Francisco and Embajada, Puerto Rico



Monica Flaherty

b. 1920, South Norwalk, CT; d. 2008, Dummerston, VT

Petroglyph studies at Coabey River, Jayuya, Puerto Rico, c.1957
Monotype

Sheet a: 42 1/2 x 81 in. (108 x 205.7 cm)

Sheet b: 38 5/8 x 42 1/4 in. (98.1 x 107.3 cm)

Sheet c: 42 x 57 5/8 in. (106.7 x 146.4 cm)

Sheet d: 33 1/2 x 42 in. (85.1 x 106.7 cm)

Para La Naturaleza, Puerto Rico Conservation Trust



Taíno culture, Dominican Republic

Amulet, 1200–1500

Stone

1 1/2 x 1 x 3/4 in. (3.8 x 2.5 x 1.9 cm)

El Museo del Barrio, New York; gift of Dicey Taylor, PC2000.8.1



Taíno, Huecoid, and Saladoid cultures, Puerto Rico

Burenes, n.d.

Clay

Museo de Historia, Antropología y Arte, Universidad de Puerto Rico, San Juan



Soraya Serra-Collazo

b. 1970, San Juan, Puerto Rico; lives in San Juan, Puerto Rico

Positive molds from basket-impressed *burenes*, 2004

Clay reproduction made from precolonial ceramic fragments

Private collection

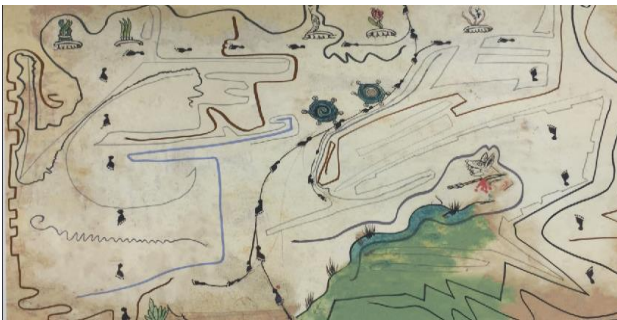


Pre-Taíno culture, Dominican Republic

Antillean calendar or seal, n.d.

Ceramic

Museo de Historia, Antropología y Arte, Universidad de Puerto Rico, San Juan



Guadalupe Maravilla

b. 1976, San Salvador, El Salvador; lives in Richmond, VA, and Brooklyn, NY

Requiem for my border crossing and my undocumented father's #1, 2016–18

Inkjet print with graphite pencil and ink

20 × 30 in. (50.8 × 76.2 cm)

Collection of the artist



Guadalupe Maravilla

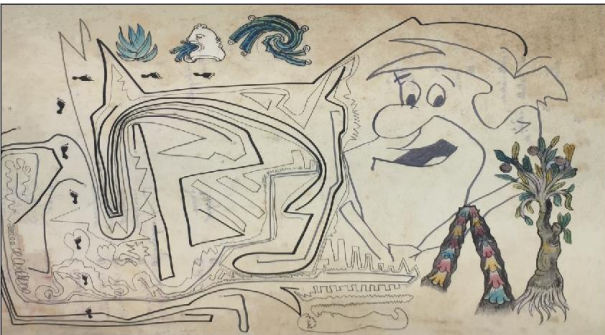
b. 1976, San Salvador, El Salvador; lives in Richmond, VA, and Brooklyn, NY

Requiem for my border crossing (Collaborative drawing between the undocumented) #3, 2016–18

Inkjet print with graphite pencil and ink

30 × 20 in. (76.2 × 50.8 cm)

Collection of the artist



Guadalupe Maravilla

b. 1976, San Salvador, El Salvador; lives in Richmond, VA, and Brooklyn, NY

Requiem for my border crossing and my undocumented father's #4, 2016–18

Inkjet print with graphite pencil and ink

20 × 30 in. (50.8 × 76.2 cm)

Collection of the artist



Guadalupe Maravilla

b. 1976, San Salvador, El Salvador; lives in Richmond, VA, and Brooklyn, NY

Requiem for my border crossing and my undocumented father's #6, 2016–18

Inkjet print with graphite pencil and ink

20 × 30 in. (50.8 × 76.2 cm)

Collection of the artist



Guadalupe Maravilla

b. 1976, San Salvador, El Salvador; lives in Richmond, VA, and Brooklyn, NY

Requiem for my border crossing (Collaborative drawing between the undocumented) #7, 2018

Inkjet print with graphite pencil and ink

20 × 30 in. (50.8 × 76.2 cm)

Collection of the artist



Guadalupe Maravilla

b. 1976, San Salvador, El Salvador; lives in Richmond, VA, and Brooklyn, NY

Requiem for my border crossing (Collaborative drawing between the undocumented) #8, 2018

Inkjet print with graphite pencil and ink

20 x 30 in. (50.8 x 76.2 cm)

Collection of the artist



Guadalupe Maravilla

b. 1976, San Salvador, El Salvador; lives in Richmond, VA, and Brooklyn, NY

Requiem for my border crossing (Collaborative drawing between the undocumented) #9, 2018

Inkjet print with graphite pencil and ink

20 x 30 in. (50.8 x 76.2 cm)

Collection of the artist



Guadalupe Maravilla

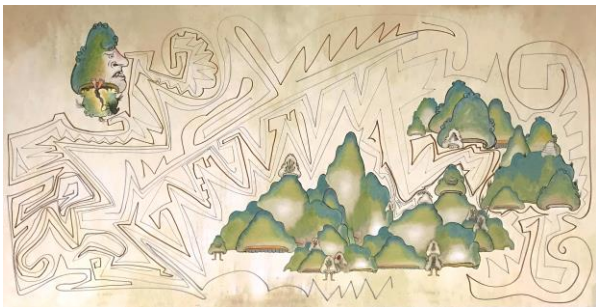
b. 1976, San Salvador, El Salvador; lives in Richmond, VA, and Brooklyn, NY

Requiem for my border crossing (Collaborative drawing between the undocumented) #10, 2018

Inkjet print with graphite pencil and ink

30 x 60 in. (76.2 x 152.4 cm)

Collection of the artist



Guadalupe Maravilla

b. 1976, San Salvador, El Salvador; lives in Richmond, VA, and Brooklyn, NY

Requiem for my border crossing (Collaborative drawing between the undocumented) #11, 2018

Inkjet print with graphite pencil and ink

30 x 60 in. (76.2 x 152.4 cm)

Collection of the artist



Guadalupe Maravilla

b. 1976, San Salvador, El Salvador; lives in Richmond, VA, and Brooklyn, NY

Requiem for my border crossing (Collaborative drawing between the undocumented) #12, 2018

Inkjet print with graphite pencil and ink

Sheet: 30 x 90 in. (76.2 x 228.6 cm)

Collection of the artist



Guadalupe Maravilla

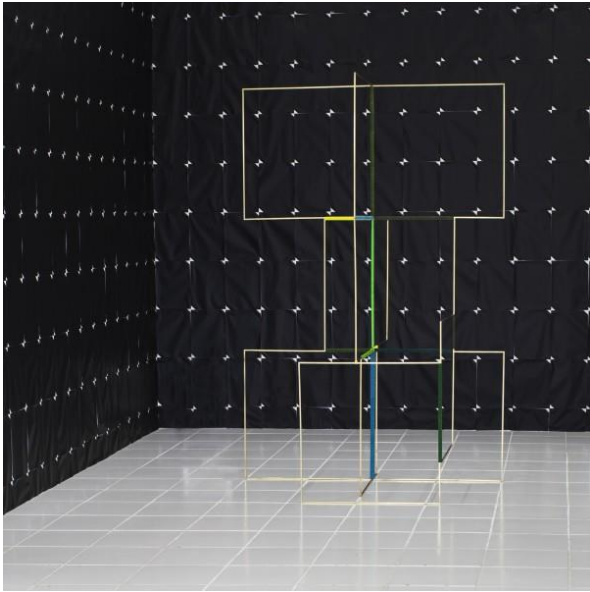
b. 1976, San Salvador, El Salvador; lives in Richmond, VA, and Brooklyn, NY

Tripa Chuca, 2018

Colored pencil and metallic marker on wall

Dimensions variable

Collection of the artist



Claudia Peña Salinas

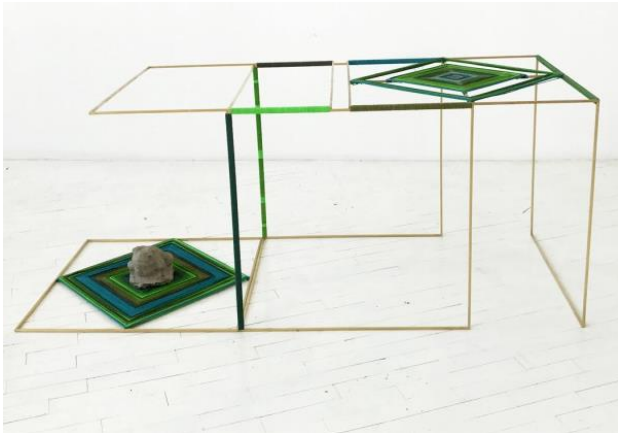
b. 1975, Montemorelos, Mexico; lives in Brooklyn, NY

Tlalicue, 2017

Brass and dyed cotton

72 1/2 x 49 x 49 in. (184.2 x 124.5 x 124.5 cm)

Collection of the artist; courtesy Embajada, Puerto Rico



Claudia Peña Salinas

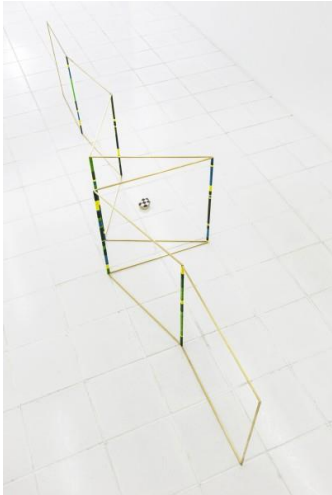
b. 1975, Montemorelos, Mexico; lives in Brooklyn, NY

Cueyatl, 2017

Brass, dyed cotton, and concrete frog

24 1/2 x 24 x 61 in. (62.2 x 61 x 154.9 cm)

Collection of Laura Guerra & Ignacio López



Claudia Peña Salinas
b. 1975, Montemorelos, Mexico; lives in Brooklyn, NY
Cuecan, 2017
Brass, dyed cotton, and stone
24 x 124 in. (61 x 315 cm)
Collection of the artist; courtesy Embajada, Puerto Rico



Claudia Peña Salinas
b. 1975, Montemorelos, Mexico; lives in Brooklyn, NY
Untitled (owl), 2015
Steel and wooden owl
76 x 2 1/2 x 2 in. (193 x 6.4 x 5.1 cm)
Collection of Laura Guerra & Ignacio López



Claudia Peña Salinas
b. 1975, Montemorelos, Mexico; lives in Brooklyn, NY
Tlaloc, 2013
Digital chromogenic print, two parts
Image: 15 x 23 in. (38.1 x 58.4 cm)
Frame: 20 x 24 in. (50.8 x 61 cm)
Collection of the artist; courtesy Embajada, Puerto Rico



Claudia Peña Salinas

b. 1975, Montemorelos, Mexico; lives in Brooklyn, NY

Chalchiuhtlicue MNA, 2018

Found image adhered to metal

50 x 72 x 1 in. (127 x 182.9 x 2.5 cm)

Collection of the artist; courtesy Embajada, Puerto Rico



Claudia Peña Salinas

b. 1975, Montemorelos, Mexico; lives in Brooklyn, NY

Tlaloc MNA, 2018

Found image adhered to metal

50 x 72 x 1 in. (127 x 182.9 x 2.5 cm)

Collection of the artist; courtesy Embajada, Puerto Rico



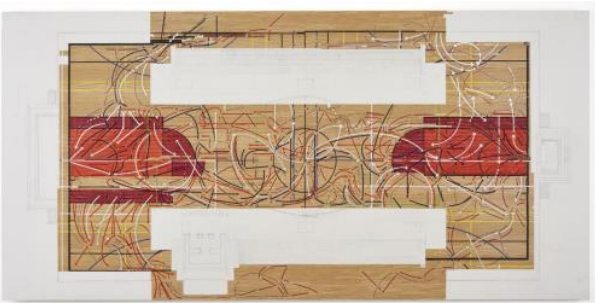
Claudia Peña Salinas

b. 1975, Montemorelos, Mexico; lives in Brooklyn, NY

Tlachacan, 2017

Video, color, sound; 18:22 min.

Courtesy the artist and Embajada, Puerto Rico



Ronny Quevedo

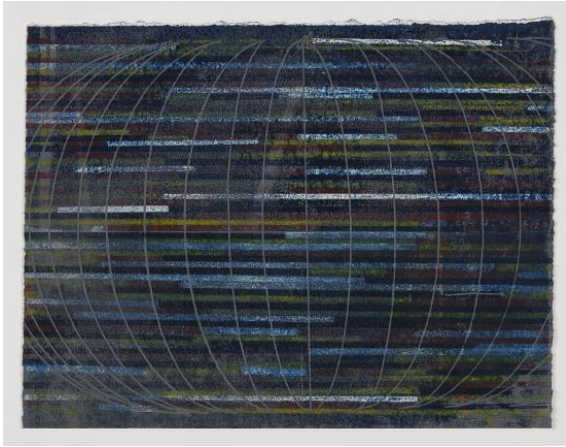
b. 1981, Guayaquil, Ecuador; lives in Bronx, NY

ULAMA-ULE-ALLEY OOP, 2017

Enamel, silver leaf, vinyl and graphite pencil on mylar

42 x 84 in. (106.7 x 213.4 cm)

Collection of the artist



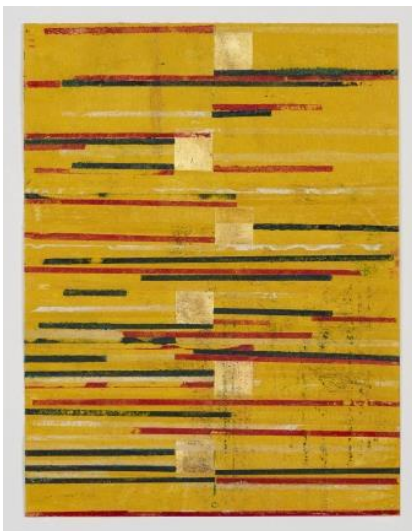
Ronny Quevedo

b. 1981, Guayaquil, Ecuador; lives in Bronx, NY
every measure of zero (errantry), 2017
Wax and enamel on paper
9 3/4 × 13 in. (24.8 × 33 cm)
Private Collection



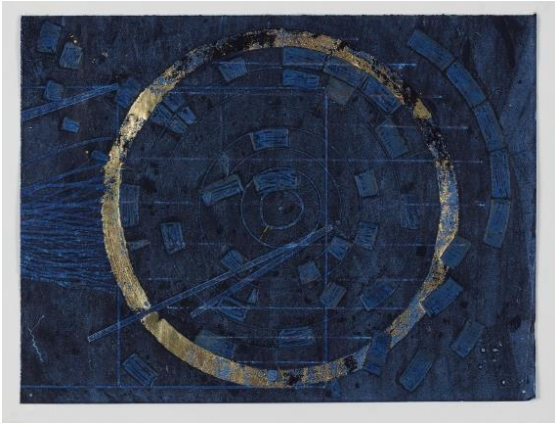
Ronny Quevedo

b. 1981, Guayaquil, Ecuador; lives in Bronx, NY
every measure of zero (up is down), 2017
Gold leaf on dressmaker's tracing paper
9 3/4 × 13 in. (24.8 × 33 cm)
Collection of the artist



Ronny Quevedo

b. 1981, Guayaquil, Ecuador; lives in Bronx, NY
every measure of zero (wari textile), 2017
Gold leaf on dressmaker's tracing paper
13 × 10 in. (33 × 25.4 cm)
Collection of Marysia Woroniecka



Ronny Quevedo

b. 1981, Guayaquil, Ecuador; lives in Bronx, NY

every measure of zero (periphery), 2017

Gold leaf on dressmaker's tracing paper

9 3/4 x 13 in. (24.8 x 33 cm)

Whitney Museum of American Art; purchase, with funds from Ann Ames in memory of Steven Ames



Ronny Quevedo

b. 1981, Guayaquil, Ecuador; lives in Bronx, NY

every measure of zero (Nazca beyond the plain), 2017

Gold leaf on dressmaker's tracing paper

9 3/4 x 13 in. (24.8 x 33 cm)

Whitney Museum of American Art; purchase, with funds from Michael Straus in memory of Steven Ames



Ronny Quevedo

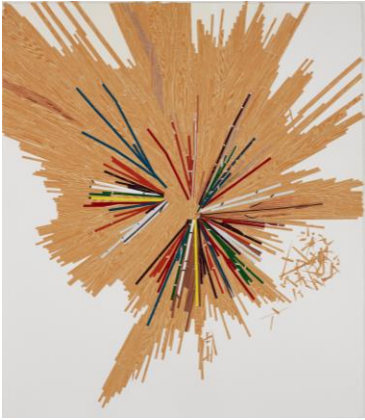
b. 1981, Guayaquil, Ecuador; lives in Bronx, NY

oro blanco, 2017

Gold leaf and wax on paper

11 x 15 in. (27.9 x 38.1 cm)

Whitney Museum of American Art; purchase, with funds from Sheree and Jerry Friedman



Ronny Quevedo

b. 1981, Guayaquil, Ecuador; lives in Bronx, NY

quipu, 2017

Screen print, printed adhesive vinyl, and enamel on paper

44 × 38 in. (111.8 × 96.5 cm)

Collection of the artist



Ronny Quevedo

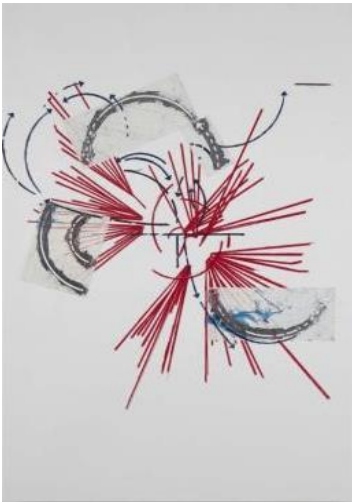
b. 1981, Guayaquil, Ecuador; lives in Bronx, NY

Cabeza Magica, 2012

Printed adhesive vinyl, enamel, gold leaf, silver leaf, and pattern paper on paper

50 × 38 in. (127 × 96.5 cm)

Collection of the artist



Ronny Quevedo

b. 1981, Guayaquil, Ecuador; lives in Bronx, NY

Notes on the poetics of relation #2, 2015

Silver leaf, wax, and clear adhesive vinyl on paper

39 × 26 in. (99.1 × 66 cm)

Collection of the artist



Ronny Quevedo

b. 1981, Guayaquil, Ecuador; lives in Bronx, NY

Field of Play, 2016

Wax and embossment on paper

48 x 31 1/2 in. (121.9 x 80 cm)

Collection of the artist



Ronny Quevedo

b. 1981, Guayaquil, Ecuador; lives in Bronx, NY

Errant Globe, 2015

Soccer-ball bladder and globe stand

11 3/4 x 8 1/4 x 7 1/2 in. (29.8 x 21 x 19.1 cm)

Collection of the artist



Ronny Quevedo

b. 1981, Guayaquil, Ecuador; lives in Bronx, NY

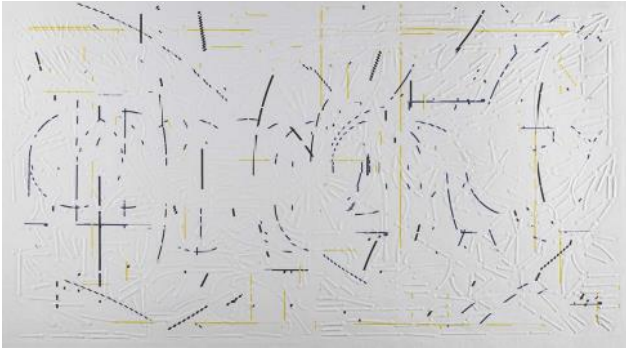
Ulama, Ule, Olé, 2012

Milk crates and zipties, two parts

Dimensions variable

Collection of the artist





Ronny Quevedo

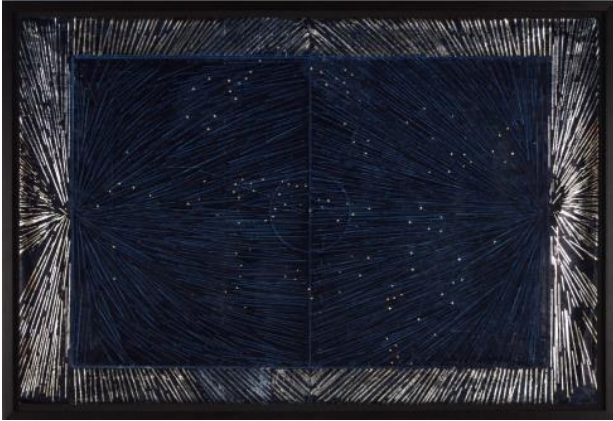
b. 1981, Guayaquil, Ecuador; lives in Bronx, NY

The Main Event (Nomadic Structures), 2016

Screen print with blind embossment on paper

26 × 39 in. (66 × 99.1 cm)

Collection of Reuben O. Charles II and Kimberly R. Charles



Ronny Quevedo

b. 1981, Guayaquil, Ecuador; lives in Bronx, NY

(lyra), 2017

Silver leaf on dressmaker's tracing paper

26 × 39 in. (66 × 99.1 cm)

Collection of the artist



Ronny Quevedo

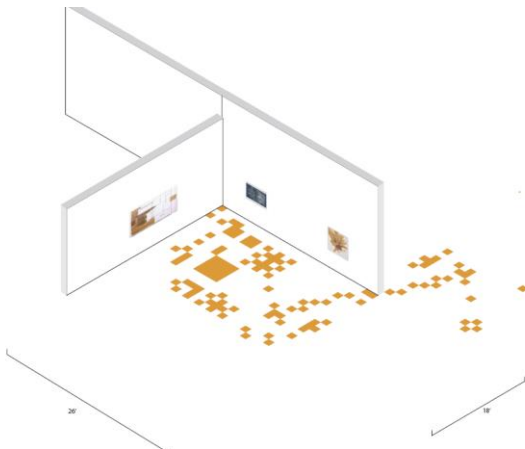
b. 1981, Guayaquil, Ecuador; lives in Bronx, NY

origin points of lyra (5-3-2-1), 2017

Silver leaf, gold leaf and wax on paper

25 × 38 in. (63.5 × 96.5 cm)

Private collection



Ronny Quevedo

b. 1981, Guayaquil, Ecuador; lives in Bronx, NY

Orders of Magnitude (desde Qoricancha), 2018

Gold leaf and imitation gold leaf on linoleum tile

Dimensions variable

Collection of the artist



Clarissa Tossin

b. 1973, Porto Alegre, Brazil; lives in Los Angeles, CA

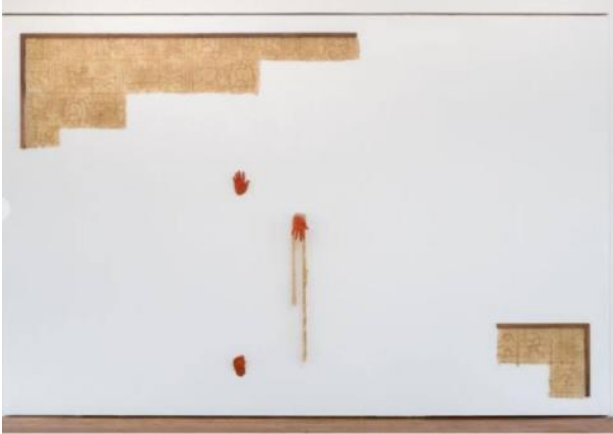
Ch'u Mayaa, 2017

Video, color, sound; 17:57 min.

Courtesy the artist

Originally commissioned and produced by the City of Los Angeles Department of Cultural Affairs for the exhibition *Condemned to Be Modern* at the Los Angeles Municipal Art Gallery as part of the Getty's Pacific Standard Time: LA/LA initiative

Choreographer/performer: Crystal Sepúlveda; cinematographer: Jeremy Glaholt



Clarissa Tossin

b. 1973, Porto Alegre, Brazil; lives in Los Angeles, CA

A cycle of time we don't understand (reversed, invented, and rearranged), 2017

Silicone, walnut, faux terracotta (dyed plaster)

Dimensions variable

Collection of the artist; courtesy of Commonwealth and Council, Los Angeles



Clarissa Tossin

b. 1973, Porto Alegre, Brazil; lives in Los Angeles, CA

Yaxchilán Lintel 25 (feathered serpent), 2017

Silicone, walnut, faux serpent skin (vinyl), synthetic hair, and faux quetzal feather (dyed rooster feather)

Dimensions variable

Collection of the artist; courtesy of Commonwealth and Council, Los Angeles



Clarissa Tossin

b. 1973, Porto Alegre, Brazil; lives in Los Angeles, CA

A two-headed serpent held in the arms of human beings, or, Ticket Window, 2017

Silicone, walnut, faux terracotta (dyed plaster)

46 x 43 1/2 x 5 in. (116.8 x 110.5 x 12.7 cm)

Collection of the artist; courtesy of Commonwealth and Council, Los Angeles



Clarissa Tossin

b. 1973, Porto Alegre, Brazil; lives in Los Angeles, CA

Ha' K'in Xook, from Piedras Negras to Hill Street, 2017

Silicone, walnut, faux jaguar fur, and faux quetzal feather (dyed rooster feather)

92 1/2 x 34 x 18 1/2 in. (235 x 86.4 x 47 cm)

Collection of the artist; courtesy of Commonwealth and Council, Los Angeles



Clarissa Tossin

b. 1973, Porto Alegre, Brazil; lives in Los Angeles, CA

xojowisaj ja (to make the building dance), 2017

Silicone, walnut, faux jaguar fur, and faux terracotta (dyed plaster)

85 x 17 1/2 x 6 in. (215.9 x 44.5 x 15.2 cm)

Collection of the artist; courtesy of Commonwealth and Council, Los Angeles