

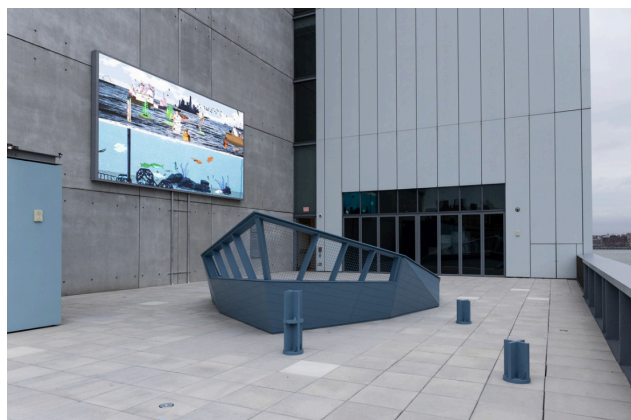
Publicity Image Sheet

Marina Zurkow: Parting Worlds & The River is a Circle

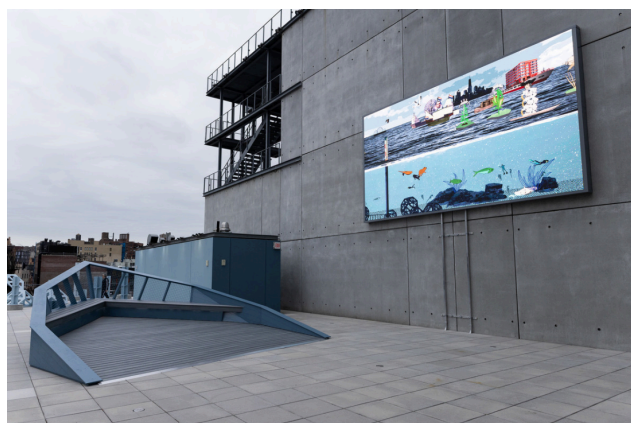
Whitney Museum of American Art

April 2025

These images are approved only for publication in conjunction with the promotion of *Marina Zurkow: Parting Worlds & The River is a Circle* solarized, overlaid with other matter (e.g., tone, text, another image, etc.), or otherwise altered, except as to overall size. Reproductions must include the full caption information adjacent to the image. Download high-resolution image files on the Whitney press site.



Installation view of *Hyundai Terrace Commission: Marina Zurkow: The River is a Circle* (Whitney Museum of American Art, New York, April 9, 2025-January 11, 2026). Photograph by Tiffany Sage/BFA.com. © BFA 2025

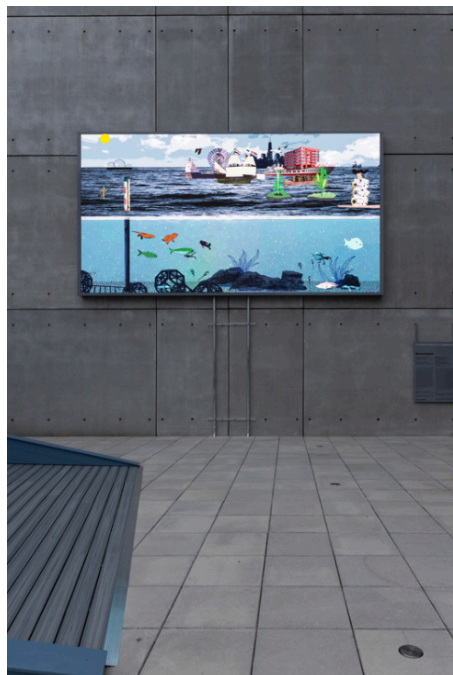


Installation view of *Hyundai Terrace Commission: Marina Zurkow: The River is a Circle* (Whitney Museum of American Art, New York, April 9, 2025-January 11, 2026). Photograph by Tiffany Sage/BFA.com. © BFA 2025

Publicity Image Sheet



Installation view of *Hyundai Terrace Commission: Marina Zurkow: The River is a Circle* (Whitney Museum of American Art, New York, April 9, 2025-January 11, 2026). Photograph by Tiffany Sage/BFA.com. © BFA 2025



Installation view of *Hyundai Terrace Commission: Marina Zurkow: The River is a Circle* (Whitney Museum of American Art, New York, April 9, 2025-January 11, 2026). Photograph by Tiffany Sage/BFA.com. © BFA 2025



Installation view of *Marina Zurkow: Parting Worlds* (Whitney Museum of American Art, New York, April 9, 2025-January 11, 2026). From left to right: *Mesocosm (Wink, TX)*, 2012; *Hyundai Terrace Commission: Marina Zurkow: The River is a Circle*, 2025. Photograph by Tiffany Sage/BFA.com. © BFA 2025

Publicity Image Sheet



Installation view of *Marina Zurkow: Parting Worlds* (Whitney Museum of American Art, New York, April 9, 2025-January 11, 2026). From left to right: *The Earth Eaters*, 2025; *Mesocosm (Wink, TX)*, 2012. Photograph by Tiffany Sage/BFA.com. © BFA 2025



Installation view of *Marina Zurkow: Parting Worlds* (Whitney Museum of American Art, New York, April 9, 2025-January 11, 2026). From left to right: *The Earth Eaters*, 2025; *Mesocosm (Wink, TX)*, 2012. Photograph by Tiffany Sage/BFA.com. © BFA 2025



Installation view of *Marina Zurkow: Parting Worlds* (Whitney Museum of American Art, New York, April 9, 2025-January 11, 2026). *Mesocosm (Wink, TX)*, 2012. Photograph by Tiffany Sage/BFA.com. © BFA 2025

Publicity Image Sheet



Installation view of *Marina Zurkow: Parting Worlds* (Whitney Museum of American Art, New York, April 9, 2025-January 11, 2026). *The Earth Eaters*, 2025. Photograph by Tiffany Sage/BFA.com. © BFA 2025