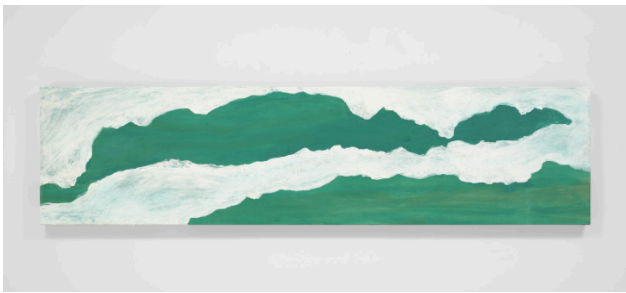


Mary Heilmann: Long Line

Whitney Museum of American Art
Opening April 2025

These images are approved only for publication in conjunction with the promotion of *Mary Heilmann: Long Line*. Each image may not be cropped, bled off the page, colorized, solarized, overlaid with other matter (e.g., tone, text, another image, etc.), or otherwise altered, except as to overall size. Reproductions must include the full caption information adjacent to the image. Download high-resolution image files on the Whitney press site.



Mary Heilmann, *Long Line*, 2020. Acrylic on wood panel, 24 × 96 × 3.25 in. (60.96 × 243.84 × 8.26 cm). Collection of Megan & Mark Dowley. Courtesy of the Artist, 303 Gallery, New York, and Hauser & Wirth. © Mary Heilmann. Photograph by Thomas Barrat



Updated caption: Artist Mary Heilmann on the Terrace. Installation view of *Mary Heilmann: Sunset* (Whitney Museum of American Art, New York, May 1, 2015–September 27, 2015). Photograph by Marco Anelli