

## Publicity Image Sheet

# ***Amy Sherald: American Sublime***

Whitney Museum of American Art

April 9–August 2025

These images are approved only for publication in conjunction with the promotion of *Amy Sherald: American Sublime* solarized, overlaid with other matter (e.g., tone, text, another image, etc.), or otherwise altered, except as to overall size. Reproductions must include the full caption information adjacent to the image. Download high-resolution image files on the Whitney press site.

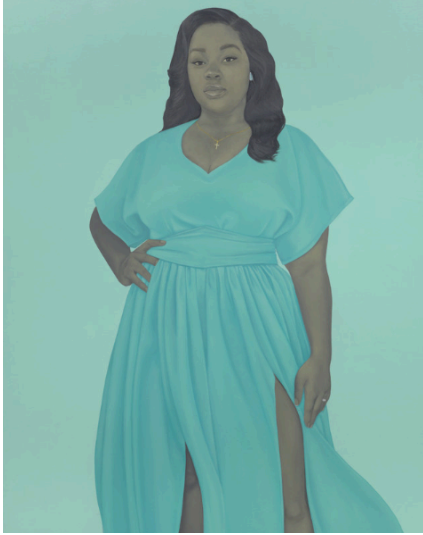


Amy Sherald, *Michelle LaVaughn Robinson Obama*, 2018. Oil on linen, 72 1/8 × 60 1/8 × 2.5 in. (183.1 × 152.718 × 6.3 cm). National Portrait Gallery, Smithsonian Institution. The National Portrait Gallery is grateful to the following lead donors for their support of the Obama portraits: Kate Capshaw and Steven Spielberg; Judith Kern and Kent Whealy; Tommie L. Pegues and Donald A. Capoccia. Courtesy of the Smithsonian's National Portrait Gallery



Amy Sherald, *If you surrendered to the air, you could ride it*, 2019. Oil on canvas, 130 × 108 × 2 1/2 in. (330.2 × 274.3 × 6.4 cm). Whitney Museum of American Art, New York; purchase with funds from the Painting and Sculpture Committee, Sascha S. Bauer, Jack Cayre, Nancy Carrington Crown, Nancy Poses, Laura Rapp, and Elizabeth Redleaf 2020.148. © Amy Sherald

## Publicity Image Sheet



Amy Sherald, *Breonna Taylor*, 2020. Oil on linen, 54 × 43 × 2 1/2 in. (137.2 × 109.2 × 6.4 cm). The Smithsonian National Museum of African American History and Culture, purchase made possible by a gift from Kate Capshaw and Steven Spielberg/The Hearthland Foundation and the Speed Art Museum, Louisville, KY, purchase made possible by a gift from the Ford Foundation. © Amy Sherald



Amy Sherald, *What's precious inside of him does not care to be known by the mind in ways that diminish its presence (All American)*, 2017. Oil on canvas, 54 × 43 × 2.5 in. (137.16 × 109.22 × 6.35 cm). Private collection, courtesy Monique Meloche Gallery. © Amy Sherald. Courtesy the artist and Hauser & Wirth. Photograph by Joseph Hyde

## Publicity Image Sheet



Amy Sherald, *Miss Everything (Unsuppressed Deliverance)*, 2014. Oil on canvas, 54 × 43 × 2.5 in. (137.16 × 109.22 × 6.35 cm). Private Collection. © Amy Sherald. Courtesy the artist and Hauser & Wirth. Photograph by Joseph Hyde



Amy Sherald, *Try on dreams until I find the one that fits me. They all fit me*, 2017. Oil on canvas, 54 × 43 × 2.5 in. (137.16 × 109.22 × 6.35 cm). Kemper Museum of Contemporary Art, Kansas City, Missouri, Museum purchase made possible by a gift from the Bebe and Crosby Kemper Foundation. © Amy Sherald. Courtesy the artist and Hauser & Wirth. Photograph by Joseph Hyde

## Publicity Image Sheet

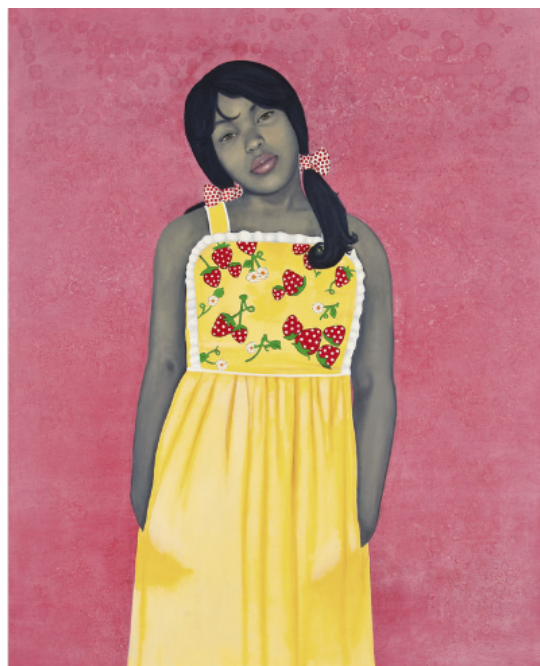


Amy Sberald, *Untitled (Opal)*, 2019, Oil on linen, 54 × 43 × 2.5 in. (137.16 × 109.22 × 6.35 cm). Collection of Robert F. Smith. © Amy Sberald. Courtesy the artist and Hauser & Wirth. Photograph by Joseph Hyde



Amy Sberald, *She Always Believed the Good about Those She Loved*, 2018. Oil on canvas, 54 × 43 × 2.5 in. (137.16 × 109.22 × 6.35 cm). Private collection, courtesy Monique Meloche Gallery. © Amy Sberald. Courtesy the artist and Hauser & Wirth. Photograph by Joseph Hyde

## Publicity Image Sheet



Amy Sherald, *They Call Me Redbone, but I'd Rather Be Strawberry Shortcake*, 2009. Oil on canvas, 54 × 43 × 2.5 in. (137.16 × 109.22 × 6.35 cm). National Museum of Women in the Arts, Washington, DC, gift of Steven Scott, Baltimore, in honor of the artist and the 25th anniversary of National Museum of Women in the Arts. © Amy Sherald. Courtesy the artist and Hauser & Wirth. Photograph by Ryan Stevenson



Amy Sherald, *The Bathers*, 2015. Oil on canvas, 72 1/8 × 67 × 2.5 in. (183.2 × 170.2 cm). Private Collection. © Amy Sherald. Courtesy the artist and Hauser & Wirth. Photograph by Joseph Hyde



## Publicity Image Sheet



Amy Sherald, *Saint Woman*, 2015. Oil on canvas, 54 × 43 × 2.5 in. (137.16 × 109.22 × 6.35 cm). Private collection. Courtesy Monique Meloche Gallery and Hauser & Wirth. © Amy Sherald. Courtesy the artist and Hauser & Wirth. Photograph by Joseph Hyde



Amy Sherald, *Planes, Rockets, and the Spaces in Between*, 2018. Oil on canvas, 100 × 67 × 2.5 in. (254 × 170.1 × 6.35 cm). Baltimore Museum of Art, Purchase with exchange funds from the Pearlstone Family Fund and partial gift of The Andy Warhol Foundation for the Visual Arts, Inc. © Amy Sherald. Courtesy the artist and Hauser & Wirth. Photograph by Joseph Hyde

## Publicity Image Sheet



Amy Sherald, *The Rabbit in the Hat*, 2008. Oil on canvas, 54 × 43 × 2.5 in. (137.16 × 109.22 × 6.35 cm). Green Family Art Foundation, courtesy Adam Green Art Advisory. © Amy Sherald. Courtesy the artist and Hauser & Wirth. Photograph by Christina Hussey



Amy Sherald, *Precious Jewels by the Sea*, 2019, oil on linen, 120 × 108 × 2 1/2 in. (304.8 × 274.32 × 6.355 cm). Crystal Bridges Museum of American Art, Bentonville, Arkansas. © Amy Sherald. Courtesy the artist and Hauser & Wirth. Photograph by Joseph Hyde

## Publicity Image Sheet



Amy Sherald, *Mama Has Made the Bread (How Things Are Measured)*, 2018. Oil on canvas, 54 × 43 × 2.5 in. (137.16 × 109.22 × 6.35 cm). Private Collection. © Amy Sherald. Courtesy the artist and Hauser & Wirth. Photograph by Joseph Hyde



Amy Sherald, *A Bucket Full of Treasures (Papa Gave Me Sunshine to Put in My Pocket)*, 2020. Oil on linen, 54 × 43 × 2.5 in. (137.16 × 109.22 × 6.35 cm). Private collection. © Amy Sherald. Courtesy the artist and Hauser & Wirth. Photograph by Joseph Hyde



## Publicity Image Sheet



Amy Sherald, *Listen, you a wonder. You a city of a woman. You got a geography of your own*, 2016. Oil on canvas, 54 × 43 × 2.5 in. (137.16 × 109.22 × 6.35 cm). Collection of Rashid Johnson and Sheree Hovsepian. © Amy Sherald. Courtesy the artist and Hauser & Wirth. Photograph by Joseph Hyde



Amy Sherald, *Mother and Child*, 2016 Oil on canvas, 54 × 43 × 2.5 in. (137.16 × 109.22 × 6.35 cm). Courtesy The Blanchard Nesbitt Family. © Amy Sherald. Courtesy the artist and Hauser & Wirth. Photograph by Joseph Hyde

## Publicity Image Sheet



Amy Sherald, *It Made Sense...Mostly in Her Mind*, 2011. Oil on canvas, 54 × 43 × 2.5 in. (137.16 × 109.22 × 6.35 cm). Nancy and Sean Cotton Collection. © Amy Sherald. Courtesy the artist and Hauser & Wirth. Photograph by Lowry Art Services



Amy Sherald, *Hangman*, 2007. Oil on canvas, 100 × 67 × 2.5 in. (254 × 170.18 × 6.35 cm). Collection of Sheryll Cashin and Marque Chambliss. © Amy Sherald. Courtesy the artist and Hauser & Wirth. Photograph by Kelvin Bulluck

## Publicity Image Sheet



Amy Sherald, *Handsome*, 2019. Oil on canvas, 54 × 43 × 2.5 in. (137.16 × 109.22 × 6.35 cm). Collection of Anderson Cooper. © Amy Sherald. Courtesy the artist and Hauser & Wirth. Photograph by Joseph Hyde



Amy Sherald, *For Love, and for country*, 2022. Oil on linen, 123 1/4 × 93 1/8 × 2 1/2 in. (313 × 236.5 × 6.4 cm). San Francisco Museum of Modern Art, purchase, by exchange, through a gift of Helen and Charles Schwab. © Amy Sherald. Courtesy the artist and Hauser & Wirth. Photograph by Joseph Hyde

## Publicity Image Sheet



Amy Sherald, *A Midsummer Afternoon Dream*, 2021. Oil on canvas, 106 × 101 × 2.5 in. (269.24 × 256.54 × 6.35 cm). Private Collection. © Amy Sherald. Courtesy the artist and Hauser & Wirth. Photograph by Joseph Hyde



Amy Sherald, *All Things Bright and Beautiful*, 2016. Oil on canvas, 54 × 43 × 2.5 in. (137.16 × 109.22 × 6.35 cm). Collection of Frances and Burton Reifler. © Amy Sherald. Courtesy the artist and Hauser & Wirth. Photograph by Joseph Hyde

## Publicity Image Sheet



Amy Sherald, *As Soft as She Is...*, 2022. Oil on linen, 54 1/8 × 43 1/8 × 2.5 in. (137.16 × 109.22 × 6.35 cm). Tate, purchased with funds provided by the Tymure Collection. © Amy Sherald. Courtesy the artist and Hauser & Wirth. Photograph by Joseph Hyde



Amy Sherald, *She had an inside and an outside now, and suddenly she knew how not to mix them*, 2018. Oil on canvas. 54 × 43 × 2.5 in. (137.2 × 109.2 × 6.3 cm). The Nelson-Atkins Museum of Art, Kansas City, Missouri. Lent by Bill and Christy Gautreaux Collection, Kansas City, 21.2023. © Amy Sherald. Image courtesy of Nelson-Atkins Digital Production & Preservation, Gabe Hopkins & Dana Anderson.