

WHITNEY

ENTERTAINING



ENTERTAINING AT THE WHITNEY

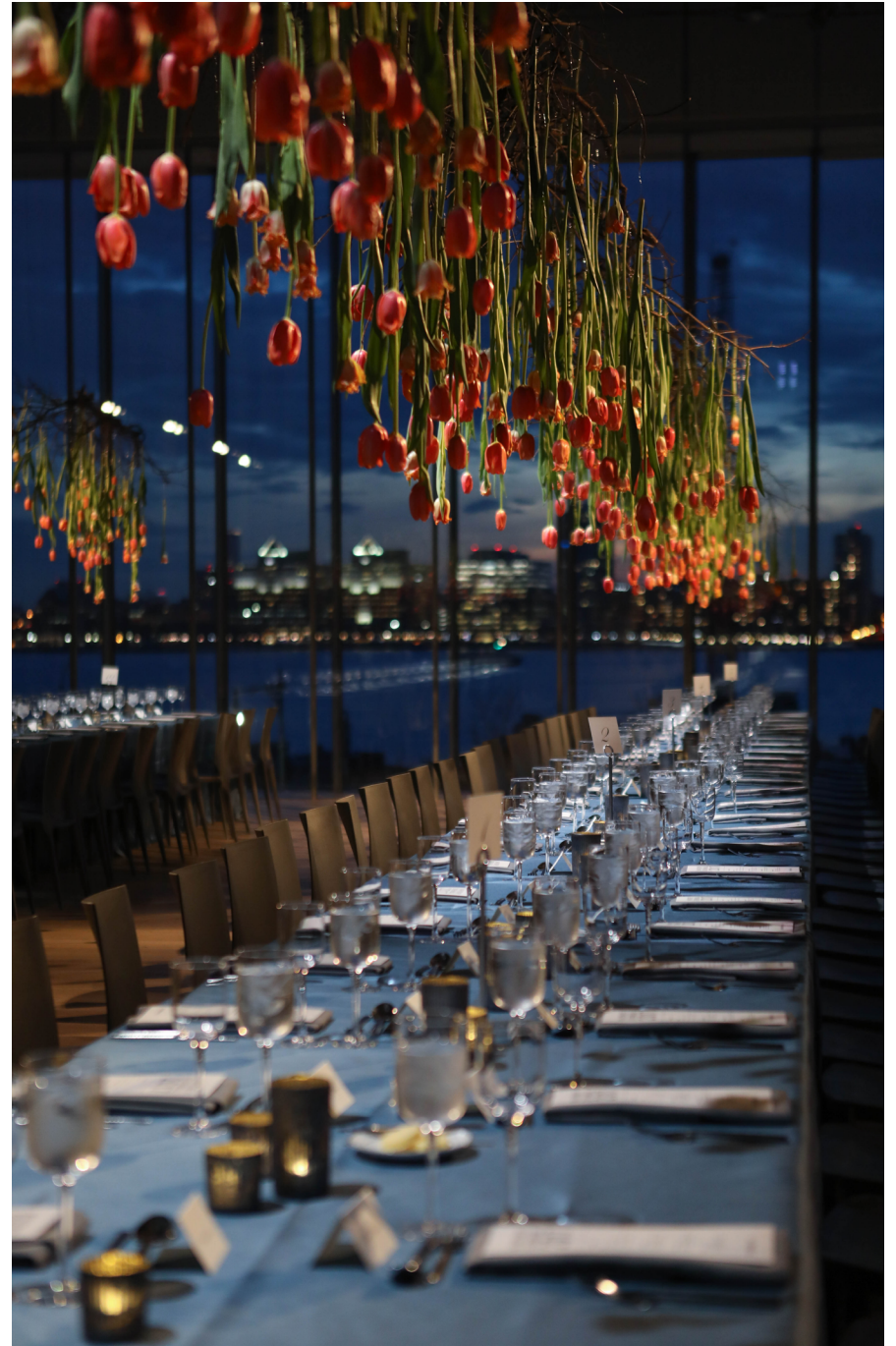
For over 90 years, the Whitney Museum of American Art has been home to the most significant and exciting works of art ever created in the United States. Now, these works are displayed in a breathtaking venue: a 220,000-square-foot building in New York City's Meatpacking District, designed by world-renowned architect Renzo Piano.

Located on Gansevoort Street at Washington Street, the Whitney Museum is nestled in one of the most prominent and desirable districts in the world, surrounded by beautifully preserved buildings and rich history. Your special event at the Whitney will be one to be remembered.

Entertaining privileges at the Whitney are exclusive to Corporate Members of the Museum and are not available to the general public.

The Museum's spaces provide the perfect setting for any event, including:

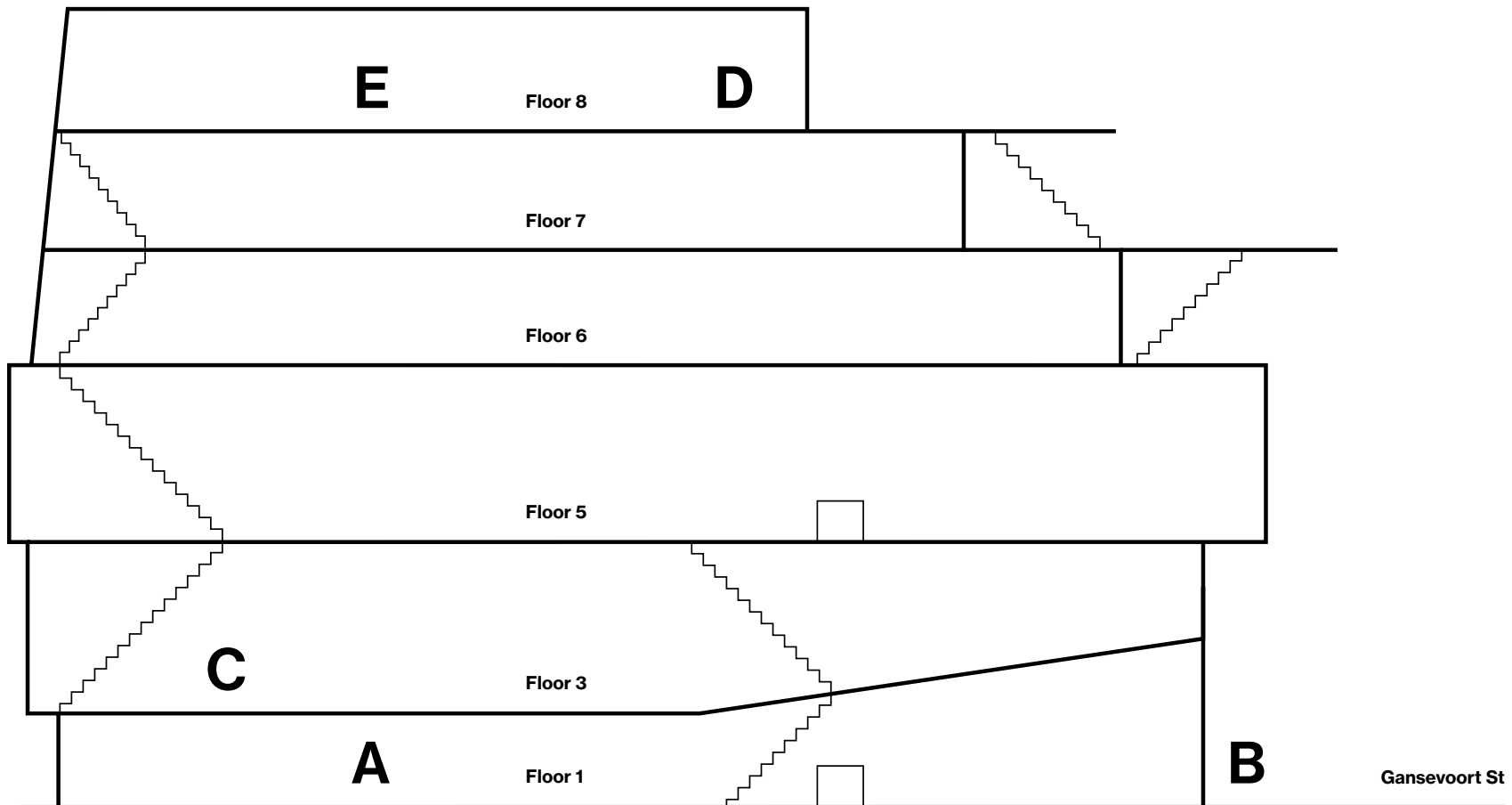
- Receptions
- Seated dinners
- Meetings and luncheons
- Fashion presentations
- Film screenings
- Lectures and panel discussions
- Toasts and exhibition tours



Photograph by Samantha Nandez/BFA.com

ENTERTAINING SPACES

- A Kenneth C. Griffin Hall
- B Pamela and Daniel DeVos Family Largo
- C Susan and John Hess Family Theater
- D Studio Bar & Thomas H. Lee Family Terrace
- E Tom and Diane Tuft Trustee Room



KENNETH C. GRIFFIN HALL



The 6,200-square-foot Museum lobby features floor-to-ceiling windows and is a versatile and unique setting for large-scale events. As the most spacious entertaining option in the Museum, Kenneth C. Griffin Hall works best for large receptions, seated dinners, and presentations.

The Kenneth C. Griffin Hall is publicly accessible and availability is subject to Museum operating hours. Large-scale receptions, along with all dinners and presentations are recommended on Tuesdays when the Museum is closed to the public.

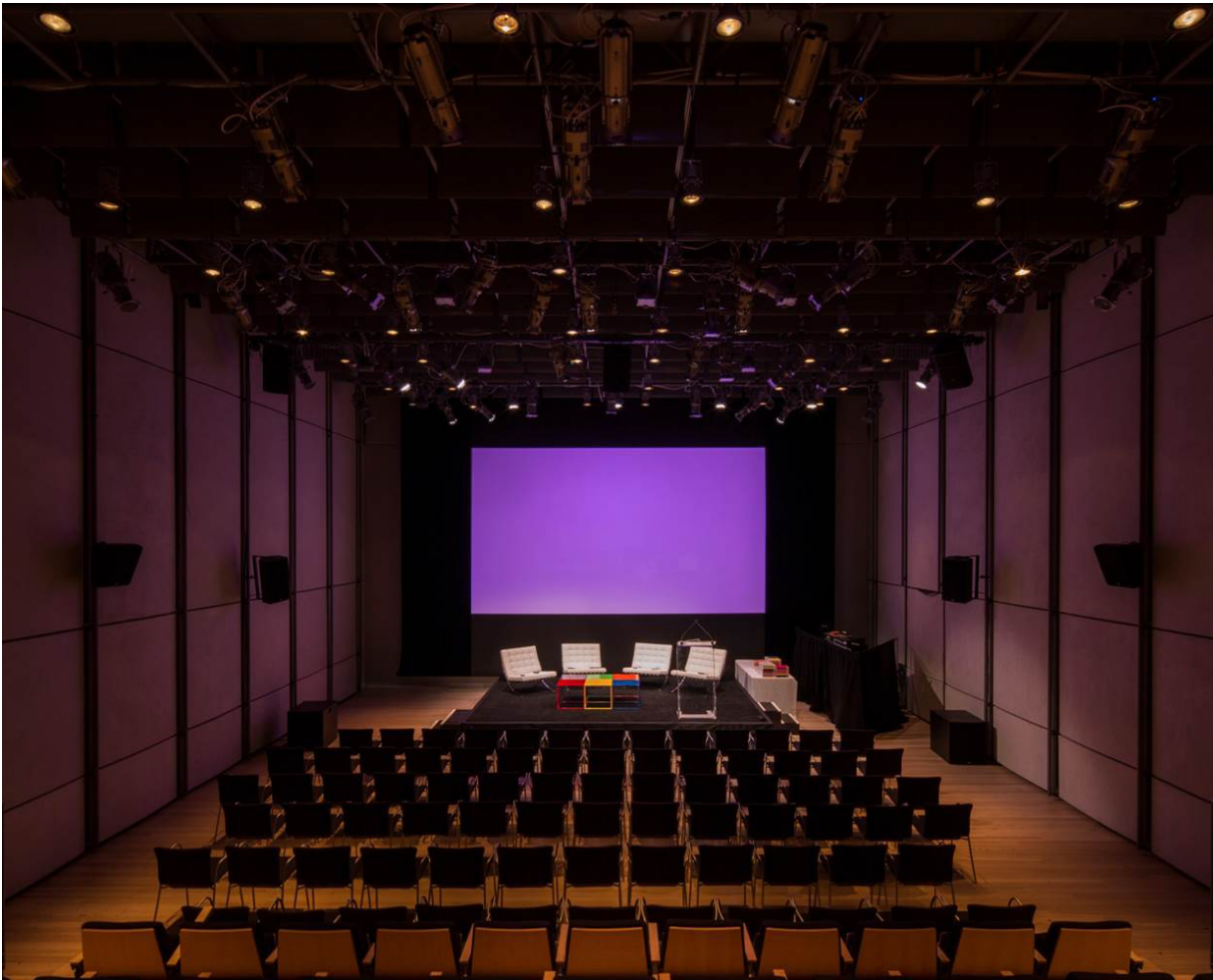
Maximum capacity: 550 guests

- Reception: 550
- Seated dinner: 350
- Presentation: 450

Corporate Membership level: \$25,000

Above: Photograph by Pegasus Productions, Right: Photograph by Matthew Carasella Photography

SUSAN AND JOHN HESS FAMILY THEATER AND GALLERY



The 4,900-square-foot Theater situated on the Museum's third floor can accommodate a variety of event formats including film and performance programs, seated dinners, and private receptions. The Theater's floor-to-ceiling windows provide stunning views of the Hudson River with fully transformable "black box" capabilities.

The Theater is not publicly accessible and can be used for a full-day setup or multi-day rentals. The Theater Gallery is publicly accessible and only available when the Museum is closed to the public.

Maximum capacity: 180 guests

- Reception: 180
- Seated dinner: 180
- Presentation: 180

Corporate Membership level: \$15,000

Above: Photograph by Arnold Brower, Right: Photograph by Matthew Carasella Photography

STUDIO BAR AND THOMAS H. LEE FAMILY TERRACE

The Museum's 2,800-square-foot eighth-floor sky-lit Studio Bar and adjacent Terrace provides a spectacular setting for simultaneous indoor/outdoor dining and receptions.

The Studio Bar and Thomas H. Lee Family Terrace is publicly accessible and availability is subject to Museum operating hours. A 7pm event time is suggested, unless the Museum is closed to the public. Early closures may be possible.

Maximum capacity: 150 guests

- Reception: 150
- Seated dinner: 60
- Presentation: 40
- Seasonal outdoor capacity: 60

Corporate Membership level: \$15,000



Photography by Matthew Cansella Photography

TOM AND DIANE TUFT TRUSTEE ROOM



Above: Photograph by Whitney Events, Right: Photograph by Nic Lehoux



The 1,200-square-foot Trustee Room features windows that overlook the Hudson River, providing northwest views and a remarkable setting for intimate dinners, receptions, meetings, and presentations.

The Tom and Diane Tuft Trustee Room is not publicly accessible and can be used for a full day setup or multi-day rentals.

Maximum capacity: 75 guests

- Reception: 75
- Seated dinner: 75
- Presentation: 50

Corporate Membership level: \$5,000

EXCLUSIVE CATERING



Photograph by Peter Gauritano

Exclusive catering at the Whitney Museum of American Art is provided by Union Square Events, the catering business from Danny Meyer's Union Square Hospitality Group.

Pricing and contact information can be provided upon request.

Union Square Events
unionsquareevents.com

THANK YOU

Entertaining at the Whitney is a privilege of Corporate Membership. To learn more about Corporate Membership, please contact corporate_partnerships@whitney.org.

In selecting the Whitney as a venue for special events, you help support the Museum's groundbreaking exhibitions, award-winning education and public programs, and community outreach initiatives.

To learn more about entertaining opportunities, please contact whitneyevents@whitney.org.

We thank our Corporate Members for their generous and continued support.