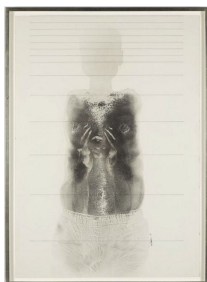


WHITNEY

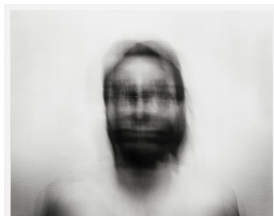
What It Becomes

Exhibition Checklist

August 24, 2024–January 12, 2025



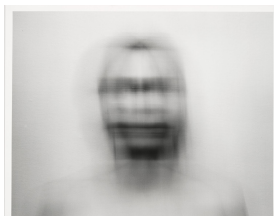
David Hammons
Close Your Eyes and See Black, 1969
Ink, graphite, and body print on paperboard
Overall: 39 1/2 × 27 5/8in. (100.3 × 70.2 cm)
Whitney Museum of American Art, New York;
promised gift of Beth Rudin DeWoody in honor of
David Hammons and *Day's End* P.2018.264



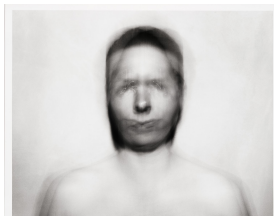
Blythe Bohnen
Self Portrait: Horizontal Motion Bisected by Vertical Motion, 1974
Gelatin silver print
Sheet: 16 × 19 7/8in. (40.6 × 50.5 cm)
Image: 15 × 18 7/8in. (38.1 × 47.9 cm)
Whitney Museum of American Art, New York; gift of
Paula and Herbert R. Molner 92.134.1



Blythe Bohnen
Square Motion, Small, 1974
Gelatin silver print
Sheet: 15 15/16 × 19 13/16in. (40.5 × 50.3 cm)
Image: 14 15/16 × 18 7/8in. (37.9 × 47.9 cm)
Whitney Museum of American Art, New York; gift of
Paula and Herbert R. Molner 2003.5



Blythe Bohnen
Horizontal Motion Large, Bisected by Vertical Motion, Large, 1974
Gelatin silver print
Sheet: 15 7/8 × 19 15/16in. (40.3 × 50.6 cm)
Image: 14 7/8 × 18 7/8in. (37.8 × 47.9 cm)
Whitney Museum of American Art, New York; gift of
Paula and Herbert R. Molner 2003.6



Blythe Bohnen
Pivotal Motion, Small, Vertical Motion, Small, 1983
Gelatin silver print
Sheet: 15 15/16 × 19 13/16in. (40.5 × 50.3 cm)
Image: 14 7/8 × 18 3/4in. (37.8 × 47.6 cm)
Whitney Museum of American Art, New York; gift of
Paula and Herbert R. Molner 2003.9



Blythe Bohnen
Horizontal Circular Motion, Small, 1974
Gelatin silver print
Sheet: 15 15/16 × 19 13/16in. (40.5 × 50.3 cm)
Image: 14 15/16 × 18 13/16in. (37.9 × 47.8 cm)
Whitney Museum of American Art, New York; gift of
Paula and Herbert R. Molner 2003.10



Blythe Bohnen
Pivotal Motion From Chin, Large, 1974
Gelatin silver print
Sheet: 15 7/8 × 19 13/16in. (40.3 × 50.3 cm)
Image: 14 7/8 × 18 15/16in. (37.8 × 48.1 cm)
Whitney Museum of American Art, New York; gift of
Paula and Herbert R. Molner 2003.11



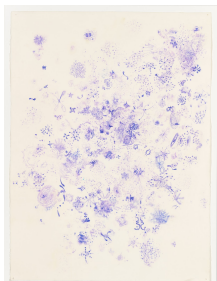
Ana Mendieta
Alma, Silueta en Fuego, 1975
From the *Silueta Series, 1973–80*
Super-8 film, color, silent, 3:30 min., transferred to
video
Whitney Museum of American Art, New York;
promised gift of Jeanne L. and Michael L. Klein to the
Whitney Museum of American Art, New York and the
Blanton Museum of Art, Austin, Texas P.2016.16



Darrel Ellis
*Self-Portrait after photograph by Robert
Mapplethorpe, 1989*
Brush and ink, and graphite pencil on paper
Sheet: 30 × 23 1/8in. (76.2 × 58.7 cm)
Image: 28 3/4 × 22 3/8in. (73 × 56.8 cm)
Whitney Museum of American Art, New York;
purchase, with funds from the Drawing and Print
Committee 2022.44



Rick Bartow
Autobiographical Hawk, 1991
Pastel and graphite on paper
46 5/8 × 59 7/8in. (118.4 × 152.1 cm)
Whitney Museum of American Art, New York; gift of
the Richard E. Bartow Trust 2022.69



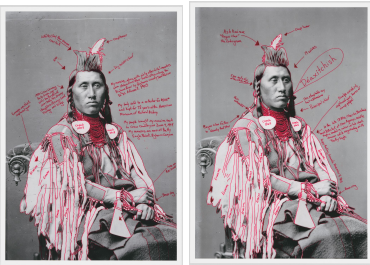
Jim Hodges
Untitled, 1992
Saliva-transferred ink on paper
29 5/8 × 22 1/8 in. (75.2 × 56.2 cm)
Whitney Museum of American Art, New York;
purchase with funds from the Drawing Committee
2007.30



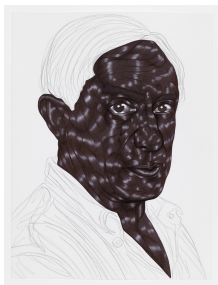
Catherine Opie
Self-Portrait/Cutting, 1993
Chromogenic print
40 × 30 in.
Whitney Museum of American Art, New York;
purchase, with funds from the Photography
Committee 94.64



Maren Hassinger
Daily Mask, 1997-2004
16mm film, color, sound; 3:32 min., transferred to
video
Whitney Museum of American Art, New York;
purchase with funds from the Film and Video
Committee 2020.77



Wendy Red Star
Déaxitchish / Pretty Eagle, 2014
From the series *1880 Crow Peace Delegation*
Two inkjet prints
Sheet (a): 25 × 17 1/2 in. (63.5 × 44.5 cm)
Sheet (b): 25 × 17 7/16 in. (63.5 × 44.3 cm)
Image, 24 × 16 1/2 in. (61 × 41.9 cm)
Whitney Museum of American Art, New York; gift of
Loren G. Lipson 2019.289.4a-b



Toyin Ojih Odutola
The Treatment 20, 2015
Pen ink, gel ink, and pencil on paper
12 × 9 1/16 in. (30.5 × 23 cm)
Whitney Museum of American Art, New York;
purchase with funds from the Drawing Committee
2016.102



Naotaka Hiro
Untitled (Whirlwind), 2018
Acrylic, wax pencil, and graphite pencil on paper
42 × 32 in. (106.7 × 81.3 cm)
Whitney Museum of American Art, New York;
purchase with funds from the Director's Discretionary
Fund 2019.19.



Naotaka Hiro
Untitled (5432112345), 2018
Acrylic, wax pencil, and graphite pencil on paper
42 × 32 in. (106.7 × 81.3 cm)
Whitney Museum of American Art, New York;
purchase with funds from the Director's Discretionary
Fund 2019.20