

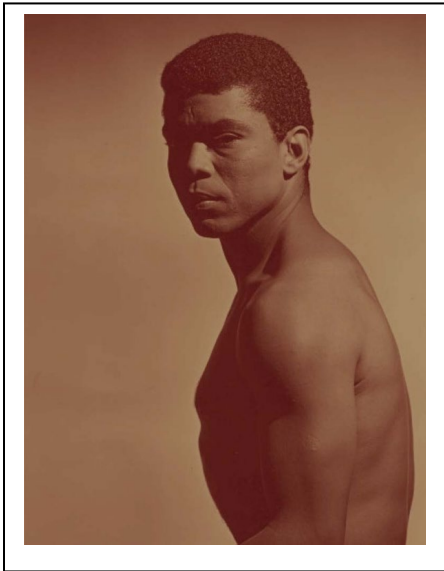
*A revelatory look at the life, work, and legacy of choreographer Alvin Ailey*

For Release: Publication Date September 24, 2024

Contact: [Elizabeth.pelton@yale.edu](mailto:Elizabeth.pelton@yale.edu)

## Edges of Ailey

### The Catalogue for the Whitney Museum of American Art Exhibition



Alvin Ailey is one of the most celebrated choreographers of the twentieth century. The creator of iconic works such as *Blues Suite*, *Revelations*, and *Cry*, he is widely recognized for the dance company he founded in 1958 when he was just twenty-seven years old. Ailey imagined and cultivated a platform for modern dance through his innovative repertoire, interdisciplinary sensibility, and support of dancers and choreographers. *Edges of Ailey*, the catalogue for the Whitney Museum of American Art exhibition opening September 25, situates Ailey within a broader social, creative, and cultural context, looking at the artists who influenced and collaborated with him, the spaces and scenes he frequented, the dynamic themes within his dances, and how his vision and work changed contemporary dance.

In this beautifully produced hardcover book, essays by artists, scholars, and critics cover topics ranging from the Black church, the South, and the Great Migration to nightclubs, musical influences, and queerness. With more than four hundred images including photographs of works Ailey choreographed, archival materials such as notebooks, sketches, letters, and never-before-published behind-the-scenes photos, and conversations about the legacy of the company with Sylvia Waters, Judith Jamison, and Masazumi Chaya as well as several contemporary dancers and scholars, this study offers an unprecedented full picture of one of the twentieth century's leading artists and the way his work continues to inspire today's dancers.

## Catalogue Publishing Details

### **Edges of Ailey, Edited by Adrienne Edwards**

Contributions by Horace D. Ballard, Harmony Bench, Kate Elswit, Aimee Meredith Cox, Thomas F. DeFrantz, Malik Gaines, Jasmine Johnson, Joshua Lubin-Levy, Uri McMillan, Ariel Osterweis, J Wortham, CJ Salapare, Kyle Abraham, Claire Bishop, Masazumi Chaya, Brenda Dixon-Gottschild, Jennifer Homans, Judith Jamison, Sylvia Waters, Jamila Wignot, and Jawole Wila Jo Zollar

To be published Tuesday, September 24, 2024

388 Pages, 9.25 x 12.00 in, 259 color + 167 b-w illus.

Hardcover, 978-0-300-27884-2, \$65.00

Distributed for the Whitney Museum of American Art by Yale University Press

### **Edges of Ailey Exhibition**

**Whitney Museum of American Art, New York**

**September 25, 2024–February 9, 2025**

Edges of Ailey, opening at the Whitney Museum of American Art on September 25, is the first large-scale museum exhibition to celebrate the life, dances, influences, and enduring legacy of visionary artist and choreographer Alvin Ailey (b. 1931, Rogers, Texas; d. 1989, New York, New York). This dynamic showcase—described as an “extravaganza” by curator Adrienne Edwards—brings together visual art, live performance, music, a range of archival materials, and a multi-screen video installation drawn from recordings of Alvin Ailey American Dance Theater (AAADT) repertory to explore the full range of Ailey’s personal and creative life.

[Additional exhibition information.](#)

***For more catalogue information or for media copies for review, please contact [Elizabeth.pelton@yale.edu](mailto:Elizabeth.pelton@yale.edu).***