

Publicity Image Sheet

Amy Sherald: American Sublime

Whitney Museum of American Art

April 9–August 2025

These images are approved only for publication in conjunction with the promotion of *Amy Sherald: American Sublime* solarized, overlaid with other matter (e.g., tone, text, another image, etc.), or otherwise altered, except as to overall size. Reproductions must include the full caption information adjacent to the image. Download high-resolution image files on the Whitney press site.



Amy Sherald, *Michelle LaVaughn Robinson Obama*, 2018. Oil on linen, 72 1/8 × 60 1/8 × 2.5 in. (183.1 × 152.718 × 6.3 cm). National Portrait Gallery, Smithsonian Institution. The National Portrait Gallery is grateful to the following lead donors for their support of the Obama portraits: Kate Capshaw and Steven Spielberg; Judith Kern and Kent Whealy; Tommie L. Pegues and Donald A. Capoccia. Courtesy of the Smithsonian's National Portrait Gallery

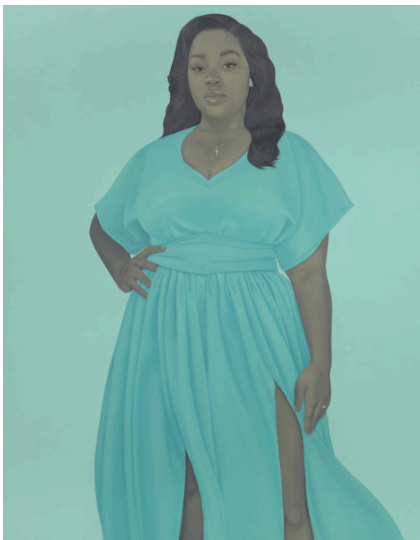


Amy Sherald, *If you surrendered to the air, you could ride it*, 2019. Oil on canvas, 130 × 108 × 2 1/2 in. (330.2 × 274.3 × 6.4 cm). Whitney Museum of American Art, New York; purchase with funds from the Painting and Sculpture Committee, Sascha S. Bauer, Jack Cayre, Nancy Carrington Crown, Nancy Poses, Laura Rapp, and Elizabeth Redleaf 2020.148. © Amy Sherald

Publicity Image Sheet



Amy Sherald, *Planes, rockets, and the spaces in between*, 2018. Oil on canvas, 100 x 67 x 2.5 in. (254 x 170.1 x 6.3 cm). Baltimore Museum of Art, Purchase with exchange funds from the Pearlstone Family Fund and partial gift of The Andy Warhol Foundation for the Visual Arts, Inc., BMA 2018.80. © Amy Sherald



Amy Sherald, *Breonna Taylor*, 2020. Oil on linen, 54 x 43 x 2 1/2 in. (137.2 x 109.2 x 6.4 cm). The Smithsonian National Museum of African American History and Culture, purchase made possible by a gift from Kate Capshaw and Steven Spielberg/The Hearthland Foundation and the Speed Art Museum, Louisville, KY, purchase made possible by a gift from the Ford Foundation. © Amy Sherald



Amy Sherald, *Precious jewels by the sea*, 2019, oil on canvas, 120 x 108 x 2 1/2 in. (304.8 x 274.32 x 6.35cm). Crystal Bridges Museum of American Art, Bentonville, Arkansas, 2020.2. © Amy Sherald. Photography by Edward C. Robison III