

Ruth Asawa Through Line

Exhibition Checklist

September 16, 2023–January 2024

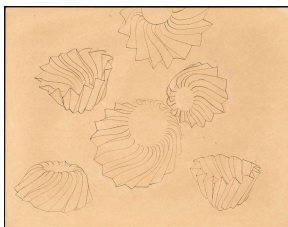
LEARNING TO SEE (FRONT WALL)



Ruth Asawa
Untitled (BMC.127, Meander in Green, Orange, and Brown), c. 1946–49
Collage of colored papers mounted to brown paper
17 1/4 × 22 3/8 in. (43.8 × 56.8 cm)
Harvard Art Museums/Busch-Reisinger Museum, Gift of Josef Albers



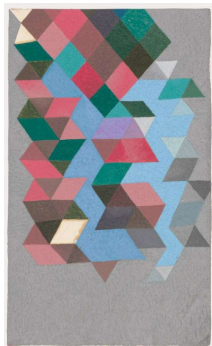
Ruth Asawa
Untitled (BMC.123, Studies of Hands and Feet), c. 1946–49
Ink on tracing paper
18 3/4 × 23 3/4 in. (47.6 × 60.3 cm)
Harvard Art Museums/Busch-Reisinger Museum, Gift of Josef Albers



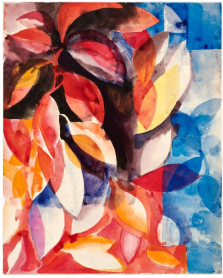
Ruth Asawa
Untitled (BMC.48, Jello Molds), c. 1946–49
Ink and graphite on paper
17 x 22 in. (43.2 x 55.9 cm)
Fine Arts Museums of San Francisco, Gift of the Artist



Ruth Asawa
Untitled (BMC.70, 3's and S's), c. 1946–49
Graphite, ink, and watercolor on paper
17 x 22 in. (43.2 x 55.9 cm)
The Josef and Anni Albers Foundation, 2007.30.32



Ruth Asawa
Untitled (BMC.132, Color Study of Many Colored Squares and Triangles), c. 1946–49
Oil on paper
16 x 9 1/2 in. (40.6 x 24.1 cm)
The Josef and Anni Albers Foundation, 1976.30.4



Ruth Asawa
Untitled (BMC.68, Stem with Leaves), c. 1948–49
 Watercolor on paper
 19 3/4 x 16 in. (50.2 x 40.6 cm)
 Fine Arts Museums of San Francisco, Gift of Aiko and
 Laurence Cuneo



Ruth Asawa
Untitled (BMC.86, Dogwood Leaf), c. 1948–49
 Oil and watercolor on tracing paper
 10 1/2 x 8 in. (26.7 x 20.3 cm)
 The Josef and Anni Albers Foundation, 2007.30.10



Ruth Asawa
Untitled (BMC.84, Dogwood Leaves), c. 1948–49
 Oil and watercolor on paper
 7 x 12 in. (17.8 x 30.5 cm)
 The Josef and Anni Albers Foundation, 2007.30.6



Ruth Asawa
Untitled (BMC.56, Dancers), c. 1948–49
 Oil and opaque watercolor on paper
 12 x 19 in. (30.5 x 48.3 cm)
 Private collection



Ruth Asawa
Untitled (BMC.107, Dancers), c. 1948–49
 Watercolor and opaque watercolor on paper
 19 3/4 x 16 in. (50.2 x 40.6 cm)
 Private collection



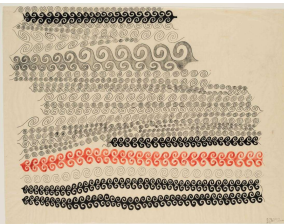
Ruth Asawa
Untitled (BMC.98, In and Out), c. 1948–49
 Oil and graphite on board
 8 1/8 x 11 in. (20.6 x 27.9 cm)
 Private collection



Ruth Asawa
Untitled (BMC.108, Stacked Triangles), c. 1948–49
 Oil and watercolor on paper
 5 1/2 x 12 in. (14 x 30.5 cm)
 The Josef and Anni Albers Foundation, 2007.30.12

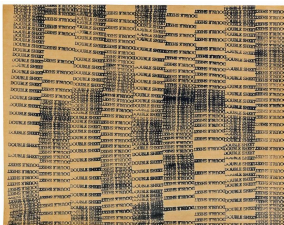


Ruth Asawa
Untitled (BMC.112, Receding Circles), c. 1948–49
 Oil on paper
 10 x 12 in. (25.4 x 30.5 cm)
 The Josef and Anni Albers Foundation, 2007.30.22

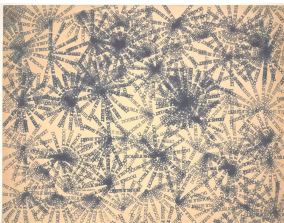


Ruth Asawa
Untitled (BMC.124, Meander - Black and Red), 1949
 Black and red inks and graphite on tracing paper
 17 1/8 x 22 in. (43.5 x 55.9 cm)
 Harvard Art Museums/Busch-Reisinger Museum, Gift of Josef Albers

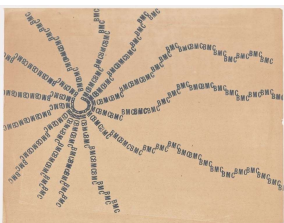
FOUND AND TRANSFORMED



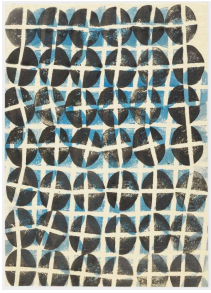
Ruth Asawa
Untitled (BMC.74, Double Sheet Stamp), 1948
 Stamped ink on paper
 17 1/8 x 22 in. (43.5 x 55.9 cm)
 Asheville Art Museum, Black Mountain College Collection, gift of Aiko & Laurence Cuneo, 2010.33.02.60



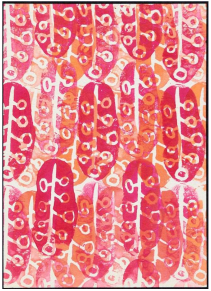
Ruth Asawa
Untitled (BMC.75, Double Sheet Clusters), c. 1948–49
 Stamped ink on paper
 17 1/4 x 22 in. (43.8 x 55.9 cm)
 Fine Arts Museums of San Francisco, Gift of the Artist



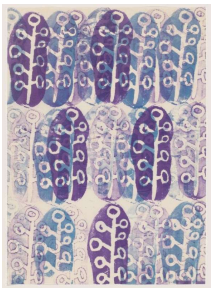
Ruth Asawa
Untitled (BMC.78, BMC Sunburst), c. 1948–49
 Stamped ink on paper
 17 x 22 in. (43.2 x 55.9 cm)
 The Josef and Anni Albers Foundation, 2007.30.44



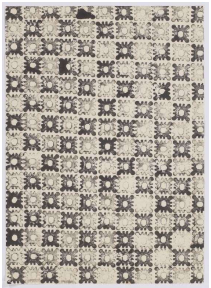
Ruth Asawa
Untitled (SF.047a, Potato Print - Cross, Blue/Black), c. 1951–52
 Stamped ink on Japanese paper
 14 1/4 x 10 in. (36.2 x 25.4 cm)
 Private collection



Ruth Asawa
Untitled (SF.045a, Potato Print - Branches, Magenta/Orange), c. 1951–52
 Stamped ink on Japanese paper
 14 1/4 x 10 1/4 in. (36.2 x 26 cm) (approximate)
 Fine Arts Museums of San Francisco, Gift of the Artist



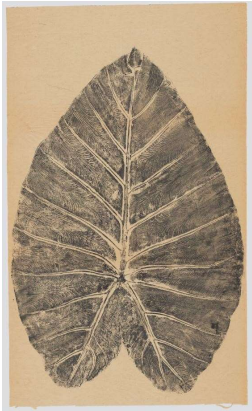
Ruth Asawa
Untitled (SF.045c, Potato Print - Branches, Purple/Blue), c. 1951–52
 Stamped ink on Japanese paper
 14 1/4 x 10 1/4 in. (36.2 x 26 cm)
 Whitney Museum of American Art, New York; purchase, with funds from the Drawing Committee, the Director's Discretionary Fund, and partial gift of Paul Lanier, 2018.112



Ruth Asawa
Untitled (SF.043e, Bike Pedal - Black/Gray [Checkerboard]), c. 1951–52
 Stamped ink on Japanese paper
 14 1/4 x 10 1/4 in. (36.2 x 26.04 cm)
 Private collection



Ruth Asawa
Untitled (LP.009, Fish), 1987
 Ink on Japanese paper
 22 x 40 in. (55.9 x 101.6 cm)
 Private collection



Ruth Asawa
Untitled (Leaf from the Sacramento Delta), c. early 1990s
 Ink on Japanese paper
 43 1/8 × 25 11/16 in. (109.5 × 65.3 cm)
 Courtesy of the Department of Special Collections,
 Stanford University Libraries



Ruth Asawa
Untitled (LP.001, Large Leaf), c. early 1990s
 Ink on Japanese paper
 17 3/4 × 17 in. (45.1 × 43.2 cm)
 Private collection

FORMS WITHIN FORMS



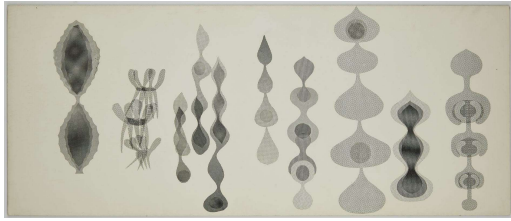
Ruth Asawa
Untitled (BMC.121, Exercise in Color Vibration and Figure Background), c. 1948–49
 Collage of colored papers and opaque watercolor on paper
 23 15/16 × 18 1/16 in. (60.8 × 45.9 cm)
 Harvard Art Museums/Busch-Reisinger Museum, Gift of Josef Albers



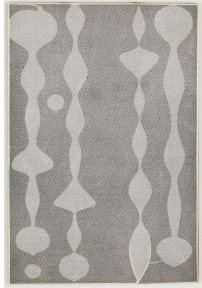
Ruth Asawa
Untitled (SF.063, Continuous Form within a Form), c. 1950s
 Pastel and gouache on board
 9 1/2 × 12 in. (24.1 × 30.5 cm)
 Private collection



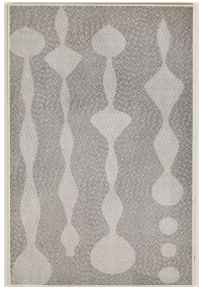
Ruth Asawa
Untitled (S.270, Hanging Six-Lobed, Complex Interlocking Continuous Form within a Form with Two Interior Spheres), 1955 (refabricated 1957–58)
 Brass and steel wire
 63 7/8 × 14 15/16 × 14 15/16 in. (162.2 × 37.9 × 37.9 cm)
 Whitney Museum of American Art, New York; gift of Howard Lipman, 63.38



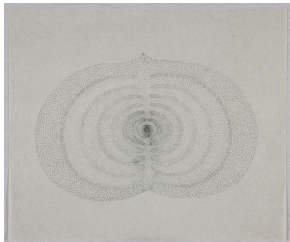
Ruth Asawa
Untitled (ZP.16B, Twelve Looped-Wire Sculptural Forms), c. mid-to-late 1950s
 Screentone on board
 10 x 24 in. (25.4 x 61 cm)
 Private collection



Ruth Asawa
Untitled (ZP.04, Four Looped-Wire Sculptural Forms), c. mid-to-late 1950s
 Screentone on matboard
 11 1/4 x 8 in. (28.6 x 20.3 cm)
 Private collection



Ruth Asawa
Untitled (ZP.05, Four Looped-Wire Sculptural Forms), c. mid-late 1950s
 Screentone on matboard
 11 1/2 x 7 1/2 in. (29.2 x 19.1 cm)
 Private collection



Ruth Asawa
Untitled (SD.106, Continuous Form within a Form) Sculpture Drawing Rendered in Dots, c. 1960s
 Ink on Japanese paper
 20 x 24 in. (50.8 x 61 cm)
 Private collection



Ruth Asawa
Untitled (WC.133, Continuous Form within a Form), after c. 1980
 Watercolor on paper
 15 1/2 x 21 1/2 in. (39.4 x 54.6 cm)
 Private collection

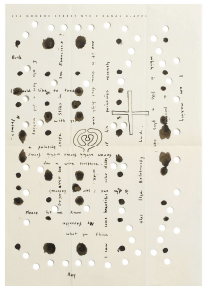


Ruth Asawa
Untitled (CF.13, Sculpture, Continuous Form within a Form), c. 1980
 Copper sheet
 7 x 12 x 1/4 in. (17.8 x 30.5 x 0.6 cm)
 Private collection

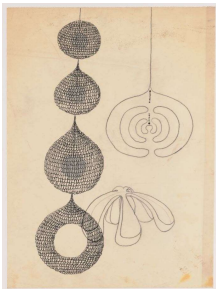


Ruth Asawa
Untitled (CF.11, Sculpture, Continuous Form within a Form), c. 1980
 Copper sheet
 16 x 8 x 1/4 in. (40.6 x 20.3 x 0.6 cm)
 Private collection

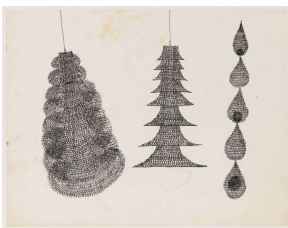
Wall case: Forms within Forms



Letter from Ray Johnson to Ruth Asawa (RJ.027), c. 1952
 Ink on paper
 10 1/2 x 7 1/2 in. (26.7 x 19.1 cm)
 Private collection



Ruth Asawa
 Looped-wire sculpture drawings included in Ruth Asawa's Guggenheim Fellowship application (STMT.002), 1952
 Ink and graphite on tracing paper
 11 x 8 in. (27.9 x 20.3 cm)
 Courtesy of the Department of Special Collections, Stanford University Libraries

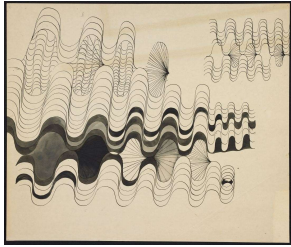


Looped-wire sculpture drawings included in Ruth Asawa's Guggenheim Fellowship application (STMT.002), 1952
 Ink and graphite on tracing paper
 8 x 11 in. (20.3 x 27.9 cm)
 Courtesy of the Department of Special Collections, Stanford University Libraries



Ruth Asawa
 Untitled sculpture drawings (SB.009), c. 1954
 Graphite on paper in hardback sketchbook
 10 x 15 3/4 in. (25.3 x 40 cm)
 Fine Arts Museums of San Francisco, Gift of the Artist

RHYTHMS AND WAVES



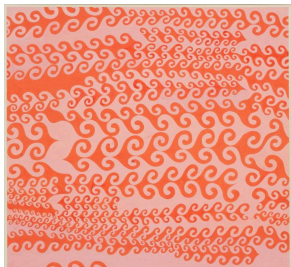
Ruth Asawa
Untitled (BMC.57, Curved Lines), c. 1946–49
 Ink on paper
 15 1/4 × 18 in. (38.7 × 45.7 cm)
 Private collection



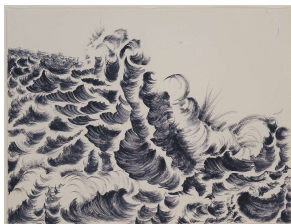
Ruth Asawa
Untitled (BMC.59, Meander - Straight Lines), c. 1948
 Ink on paper
 7 7/8 × 13 1/2 in. (20 × 34.3 cm)
 Private collection



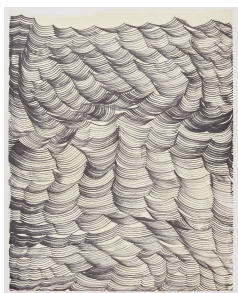
Ruth Asawa
Untitled (MI.153, Seven Thonet-Style Bentwood Chairs), c. 1950s
 Felt-tipped pen on paper
 42 x 60 in. (106.7 x 152.4 cm)
 Glenstone Museum, Potomac, Maryland



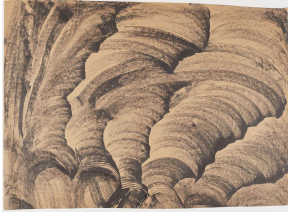
Ruth Asawa
Untitled (SF.031, Red Meander on Pink), c. late 1950s
 Opaque watercolor and graphite on board
 28 x 30 in. (71.1 x 76.2 cm)
 Private collection



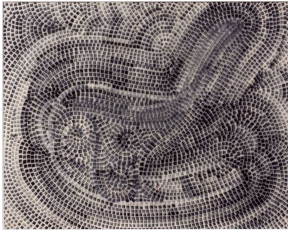
Ruth Asawa
Untitled (AB.002, Waves 2), c. late 1950s
 Felt-tipped pen on paper
 19 x 25 in. (48.3 × 63.5 cm)
 Private collection



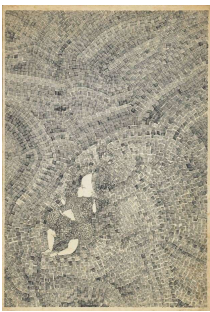
Ruth Asawa
Untitled (AB.004, Waves), c. late 1950s–early 1961
 Felt-tipped pen on paper
 23 3/4 x 19 in. (60.3 x 48.3 cm)
 Private collection



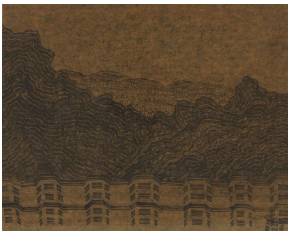
Ruth Asawa
Untitled (AB.005, Waves), c. late 1950s–1961
 Felt-tipped pen on paper
 17 1/2 x 24 in. (44.5 x 61 cm)
 Private collection



Ruth Asawa
Bentwood Rocker (MI.176), c. 1959–63
 Felt-tipped pen on paper
 18 x 22 3/4 in. (45.7 x 57.8 cm)
 Black Mountain College Museum + Arts Center, Gift of Rita Newman, 2006.10.1



Ruth Asawa
Untitled (FF.1211, Paul Lanier on Patterned Blanket), 1961
 Felt-tipped pen on paper on board
 31 x 21 in. (78.7 x 53.3 cm)
 Private collection

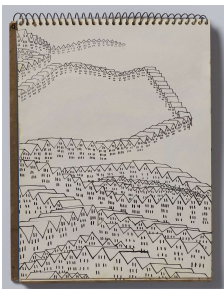


Ruth Asawa
Untitled (MI.053, Houses and Hills), 1963
 Felt-tipped pen on bitumen waterproof paper
 14 1/4 x 18 in. (36.2 x 45.7 cm)
 Private collection

Vitrine: Rhythms and Waves



Ruth Asawa
Untitled (FF.1053, Experimental Pen and Ink and Brushed Ink Technique Examples), c. late 1950s–early 1960s
 Ink and felt-tipped pen on Japanese paper
 18 x 24 1/4 in. (45.7 x 61.6 cm)
 Private collection



Ruth Asawa
Untitled cityscape drawing (SB.243), c. 1957–59
 Ink on paper in spiral-bound sketchbook
 8 x 6 in. (20.3 x 15.2 cm)
 Private collection



Ruth Asawa
 Untitled drawing of Albert Lanier sleeping (SB.024), c. early 1960s
 Felt-tipped pen and graphite on paper in spiral-bound sketchbook
 10 x 16 1/4 in. (25.4 × 41.3 cm)
 Private collection

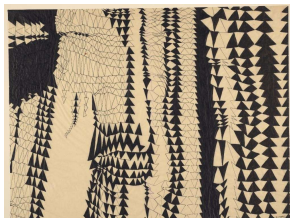


Ruth Asawa
 Untitled drawing (SB.059), 1971
 Graphite on paper in spiral-bound sketchbook
 14 x 11 in. (35.6 × 27.9 cm)
 Private collection



Ruth Asawa
 Untitled drawing (SB.070), 1973
 Graphite on paper in spiral-bound sketchbook
 12 x 9 in. (30.5 × 22.9 cm)
 Private collection

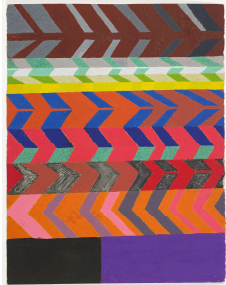
IN AND OUT



Ruth Asawa
Untitled (BMC.128, Study in Repeated Vertical Angular Lines [Triangles]), c. 1948–49
 Black and purple inks over graphite on tracing paper
 16 3/4 x 22 1/4 in. (42.6 x 56.5 cm)
 Harvard Art Museums/Busch-Reisinger Museum, Gift of Josef Albers



Ruth Asawa
Untitled (BMC.91, In and Out), c. 1948–49
 Oil on board
 8 1/4 x 14 1/4 in. (21 x 36.2 cm)
 Fine Arts Museums of San Francisco, Gift of Aiko and
 Laurence Cuneo



Ruth Asawa
Untitled (BMC.93, In and Out), c. 1948–49
 Oil and graphite on paper
 16 1/2 x 13 in. (41.9 x 33 cm)
 Private collection



Ruth Asawa
Untitled (BMC.102, In and Out), c. 1948–49
 Oil on paper
 3 1/2 x 13 in. (8.9 x 33 cm)
 The Josef and Anni Albers Foundation, 2007.30.11



Ruth Asawa
Untitled (SF.039c, Logarithmic Spiral Squares,
 Orange/Orange), c. 1951–52
 Screenprint on colored paper
 20 x 12 in. (50.8 x 30.5 cm)
 Private collection



Ruth Asawa
Untitled (SF.039b, Logarithmic Spiral Squares,
 Navy/Blue), c. 1951–52
 Screenprint on colored paper
 20 x 12 in. (50.8 x 30.5 cm)
 Private collection



Ruth Asawa
Untitled (S.691, Wall-Mounted Paperfold with Horizontal Stripes), 1951
 Ink on paper
 69 1/2 x 29 x 2 1/4 in. (171.5 x 73.7 x 5.7 cm)
 Private collection



Ruth Asawa
Untitled (S.839, Mounted Paperfold of Columns of Alternating Black and White Parallelograms), c. 1952
 Ink on paper
 20 1/8 x 13 x 1 1/8 in. (51.1 x 33 x 2.9 cm)
 Private collection



Ruth Asawa
Untitled (S.840, Mounted Paperfold of Alternating Columns of White and Black Triangles), c. 1952
 Ink on paper
 20 3/8 x 11 1/2 x 1 1/8 in. (51.8 x 29.2 x 2.9 cm)
 Private collection



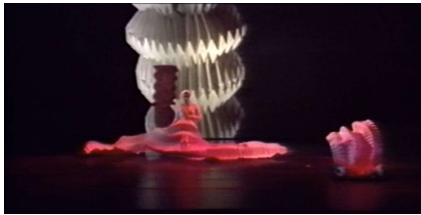
Ruth Asawa
Untitled (S.841, Mounted Paperfold of Alternating Vertical Black and White Stripes), c. 1952
 Ink on paper
 21 x 13 x 1 1/4 in. (53.3 x 33 x 3.2 cm)
 Private collection



Ruth Asawa
Untitled (S.842, Mounted Paperfold of Alternating Horizontal Black and White Zig-Zag Pattern), c. 1952
 Ink on paper
 19 3/4 x 13 1/2 x 1 1/8 in. (50.2 x 34.3 x 2.9 cm)
 Private collection

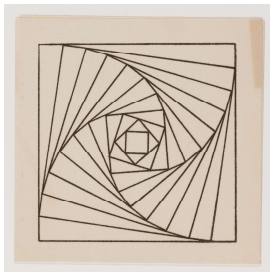


Ruth Asawa
Untitled (S.843, Mounted Paperfold with Diagonal Black and White Stripes), c. 1952
 Ink on paper
 17 5/8 x 11 3/4 x 1 1/8 in. (43.2 x 29.8 x 2.9 cm)
 Private collection

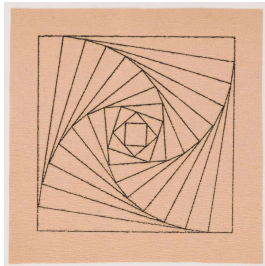


Breathing, 1989
 Digital video, color, sound, 14:50 min.
 Sculpture and visuals: Ruth Asawa, Mae Lee, and Frank Lilleff
 Choreography: Randee Pauvre and Yvonne McClung
 Performers: Artemis Anderson, Cara Goldman, Chantell Lucia, Adrian Skaj, and Joy Watts
 Performance space: School of the Arts, San Francisco (now the Ruth Asawa San Francisco School of the Arts)
 Courtesy of the Department of Special Collections, Stanford University Libraries

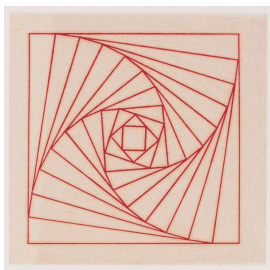
Vitrine: In and Out



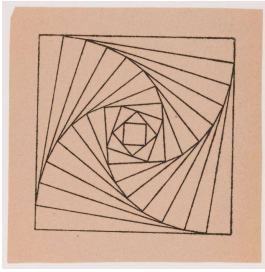
Ruth Asawa
Untitled (SF.037b, Logarithmic Spiral Square Notecard [Black]), c. 1951
 Screenprint on paper
 5 x 5 in. (12.7 x 12.7 cm)
 Courtesy of the Department of Special Collections, Stanford University Libraries



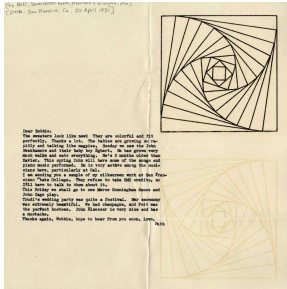
Ruth Asawa
Untitled (SF.037b, Logarithmic Spiral Square Notecard [Black]), c. 1951
 Screenprint on paper
 5 x 5 in. (12.7 x 12.7 cm)
 Courtesy of the Department of Special Collections, Stanford University Libraries



Ruth Asawa
Untitled (SF.037a, Logarithmic Spiral Square Notecard [Red]), c. 1951
 Screenprint on paper
 5 x 5 in. (12.7 x 12.7 cm)
 Courtesy of the Department of Special Collections, Stanford University Libraries



Ruth Asawa
Untitled (SF.037b, Logarithmic Spiral Square
 Notecard [Black]), c. 1951
 Screenprint on paper
 5 × 5 in. (12.7 × 12.7 cm)
 Courtesy of the Department of Special Collections,
 Stanford University Libraries



Letter from Ruth Asawa to Barbara (Bobbie) Loines
 Dreier, April 20, 1951
 Screenprint and typewriter ink on paper
 9 15/16 × 9 15/16 in. (25.3 × 24.3 cm)
 Courtesy of the Western Regional Archives, State
 Archives of North Carolina



Ruth Asawa holding a paperfold, c. 1970s
 Gelatin silver print
 9 13/16 × 7 5/16 in. (24.9 × 18.6 cm)
 Photograph by Laurence Cuneo
 Courtesy of the Department of Special Collections,
 Stanford University Libraries



Various paperfold models, c. 1970s
 Gelatin silver print
 8 × 10 in. (20.3 × 25.4 cm)
 Photograph by Laurence Cuneo
 Courtesy of the Department of Special Collections,
 Stanford University Libraries



Addie Laurie Lanier and Aiko Cuneo discussing a
 paperfold model for San Francisco Japantown's
Origami Fountains (PC.006), 1975
 Gelatin silver print
 10 × 8 in. (25.4 × 20.3 cm)
 Photograph by Laurence Cuneo
 Courtesy of the Department of Special Collections,
 Stanford University Libraries

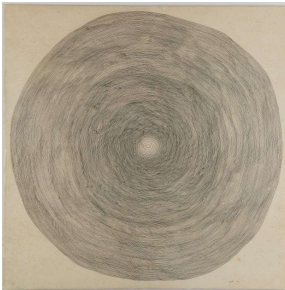


Ruth Asawa folding paper, c. 1975
 Digital print from color transparency
 7 x 4 3/4 in.
 Photograph by Laurence Cuneo
 Courtesy of the Department of Special Collections,
 Stanford University Libraries

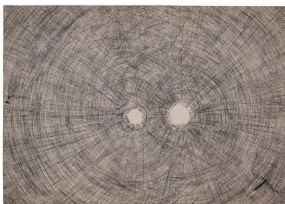


Dancers rehearsing with large paperfolds for
Breathing, performed at School of the Arts (now Ruth
 Asawa San Francisco School of the Arts), 1989
 Gelatin silver print
 8 x 10 in. (20.3 x 25.4 cm)
 Photograph by Tom Wachs
 Courtesy of the Department of Special Collections,
 Stanford University Libraries

GROWTH PATTERNS



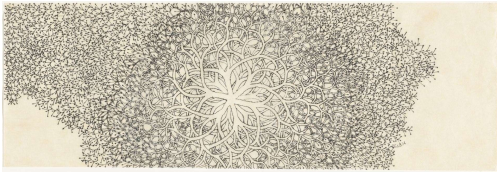
Ruth Asawa
Redwood 356 (PF.1012, Cross-Section of Redwood
 Tree), 1960
 Ink on Japanese paper
 25 x 25 in. (63.5 x 63.5 cm)
 Private collection



Ruth Asawa
Headlights (MI.137), 1961
 Ink on Japanese paper on board
 16 1/4 x 23 1/2 in. (41.3 x 59.7 cm)
 Collection of halley k harrisburg and Michael
 Rosenfeld



Ruth Asawa
Untitled (S.780, Wall-Mounted, Double-Sided, Center-
 Tied, Six-Branched Form Based on Nature), c. 1963
 Galvanized wire
 27 x 30 x 15 in. (68.6 x 76.2 x 38.1 cm)
 Fuller Craft Museum, Gift of the Joan Pearson
 Watkins Trust, 2014.19.1



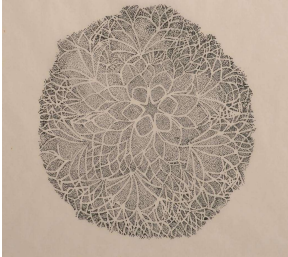
Ruth Asawa

Untitled (SD.263, Tied-Wire Sculpture Drawing with Six-Branch Center and Drops at the Ends), c. 1963–69

Ink on Japanese paper

6 x 17 3/4 in. (15.24 x 45.09 cm)

Fine Arts Museums of San Francisco, Gift of Mr. and Mrs. Edgar Sinton, Hillsborough



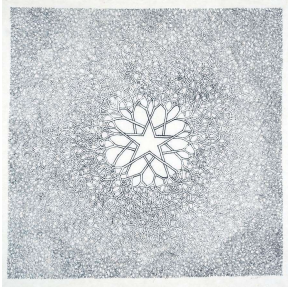
Ruth Asawa

Untitled (SD.168, Tied-Wire Sculpture Drawing with Six-Pointed Star in Center), c. 1969

Ink on Japanese paper

18 x 18 1/8 in. (45.7 x 46 cm)

Fuller Craft Museum, Gift of the Joan Pearson Watkins Trust, 2014.19.4



Ruth Asawa

Untitled (SD.129, Tied-Wire Sculpture Drawing with Five-Pointed Star in Center), c. 1973

Ink on Japanese paper

15 3/4 x 15 1/2 in. (40 x 39.4 cm)

Private collection



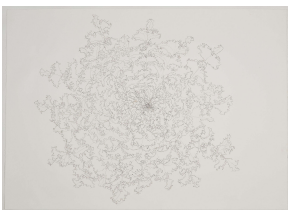
Ruth Asawa

Untitled (SD.126, Tied-Wire Sculpture Drawing with Eight Branches), c. 1980s

Ink and wax crayon on amate paper

16 3/4 x 24 1/2 in. (42.5 x 62.2 cm)

Fine Arts Museums of San Francisco, Gift of the RAL, Inc.



Ruth Asawa

Untitled (PF.295, Endive), c. early 1990s

Ink on paper

29 1/2 x 41 3/4 in. (74.93 x 106.05 cm)

Private collection

CURIOSITY AND CONTROL



Ruth Asawa

Untitled (BMC.148, Trees), c. 1948–49

Watercolor on paper

19 7/8 x 16 in. (50.5 x 40.6 cm)

Private collection



Ruth Asawa
Untitled (PT.106, Plane Tree #12), 1959
 Ink on coated paper
 12 3/8 x 18 7/8 in. (31.4 x 47.9 cm)
 Whitney Museum of American Art, New York;
 purchase with funds from Gregg Seibert, 2016.5



Ruth Asawa
Untitled (PT.064, Plane Tree), c. early 1960s
 Ink on coated paper
 37 3/4 x 25 in. (95.89 x 63.5 cm)
 Private collection



Ruth Asawa
Untitled (PF.1016, Eucalyptus Grove), 1961
 Ink on coated paper on board
 23 x 35 in. (58.4 x 88.9 cm)
 Private collection



Ruth Asawa
Untitled (AN.077, Pigeons on Brick), 1963
 Ink on coated paper
 24 1/2 x 37 1/4 in. (62.2 x 94.6 cm)
 Private collection



Ruth Asawa
Untitled (PT.062, Blue and Black Ink Wash [Water]), c. early 1960s
 Ink on coated paper
 25 x 37 3/4 in. (63.5 x 95.9 cm)
 Private collection



Ruth Asawa
Untitled (PF.686, Watermelon), c. 1960s
 Ink on Japanese paper
 20 x 30 in. (50.8 x 76.2 cm)
 Private collection



Ruth Asawa
Untitled (MI.108, Shell), c. 1969
 Ink, watercolor, and colored pencil on Japanese paper
 24 x 36 in. (61 x 91.4 cm)
 Private collection



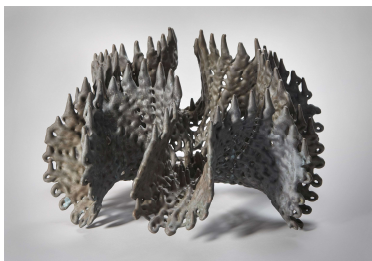
Ruth Asawa
Untitled (WC.100, Nasturtiums), c. 1970s–80s
 Watercolor on paper
 15 x 22 1/2 in. (38.1 x 57.2 cm)
 Private collection



Ruth Asawa
Untitled (WC.252, Persimmons), c. 1970s–80s
 Watercolor on paper
 14 x 17 in. (35.6 x 43.2 cm)
 Private collection



Ruth Asawa
Allie's Iris (WC.175, Purple Iris with Three Blooms), 1987
 Ink and watercolor on paper
 17 1/2 x 11 1/2 in. (44.4 x 29.2 cm)
 Private collection



Ruth Asawa
Untitled (S.003, Freestanding Reversible Undulating Form), 1998
 Bronze
 10 x 16 2/3 x 16 2/3 in. (25.4 x 42.33 x 42.33 cm)
 Private collection

LIFE LINES



Ruth Asawa
Mervin Lane (BMC.7), 1947
 Ink on paper
 24 x 17 in. (61 x 43.2 cm)
 Fine Arts Museums of San Francisco, Gift of the artist



Ruth Asawa
Untitled (FF.434, Aiko Lanier Blowing Up Balloon), c. 1955
 Ink on tracing paper
 19 x 14 in. (48.3 x 35.6 cm)
 Private collection



Ruth Asawa
Untitled (WC.134, Self Portrait), c. 1960s
 Ink on paper
 13 x 12 3/8 in. (33 x 31.4 cm)
 Courtesy Crystal Bridges Museum of American Art,
 Bentonville, Arkansas



Ruth Asawa
Untitled (WC.112, Andrea Jepson), 1964
 Ink on Japanese paper
 18 x 12 in. (45.7 x 30.5 cm)
 Fine Arts Museums of San Francisco, Gift of the Artist



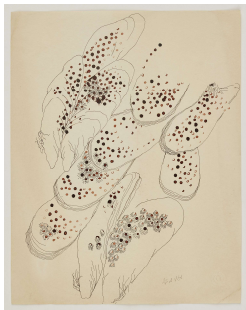
Ruth Asawa
Untitled (FF.054, Albert and Child Sleeping), c. 1964
 Ink on coated paper
 12 1/2 x 19 in. (31.8 x 48.3 cm)
 Private collection



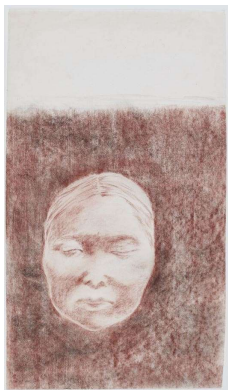
Ruth Asawa
David Tudor's Hands (FF.896), c. 1964
 Ink on paper
 12 1/2 x 22 9/16 in. (31.8 x 57.3 cm)
 Gift of Ruth Asawa. Getty Research Institute, Los Angeles (2011.M.7)



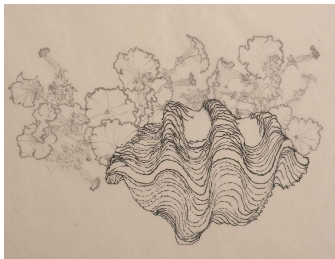
Ruth Asawa
Untitled (FF.116, Albert Lanier), c. 1965
 Ink on paper
 14 x 11 in. (35.6 x 27.9 cm)
 Private collection



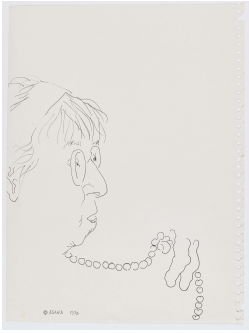
Ruth Asawa
Untitled (AN.003, Mussels), c. late 1960s
 Ink on paper
 11 x 8 1/2 in. (27.9 x 21.6 cm)
 Private collection



Ruth Asawa
Untitled (FF.016, Life Mask of Ruth Asawa), c. 1968–70s
 Conté crayon on Japanese paper
 17 1/2 x 10 in. (44.45 x 25.4 cm)
 Private collection



Ruth Asawa
Untitled (MI.146, Clam Shell with Petunias), c. 1969
 Ink on Japanese paper
 20 5/8 x 23 7/8 in. (52.4 x 60.6 cm)
 Fuller Craft Museum, Gift of the Joan Pearson Watkins Trust, 2014.19.2



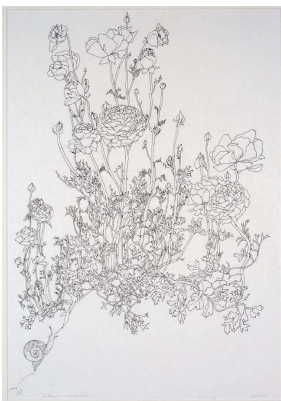
Ruth Asawa
Untitled (FF.1231, Imogen Cunningham with Beads), 1975
 Ink on paper
 12 x 9 in. (30.5 x 22.9 cm)
 Private collection



Ruth Asawa
Untitled (PF.825, John Elsesser's Leek), 1976
 Ink on Japanese paper
 40 x 18 in. (101.6 x 45.7 cm)
 Glenstone Museum, Potomac, Maryland



Ruth Asawa
Untitled (PF.099, Nasturtiums), 1994
 Ink on Japanese paper
 18 x 24 1/4 in. (45.72 x 61.6 cm)
 Private collection

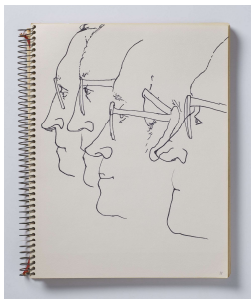


Ruth Asawa
Adam's Ranunculus (PF.1107, Bouquet from Adam Lanier with Snail), 1999
 Ink on Japanese paper
 24 x 16 7/8 in. (61 x 42.9 cm)
 Private collection

Wall case: Life Lines



Ruth Asawa
Untitled drawings of Addie Lanier sleeping (SB.013),
c. 1960
Ink on paper in spiral-bound sketchbook
8 1/2 x 11 in. (21.6 × 27.9 cm) (each sheet)
Private collection



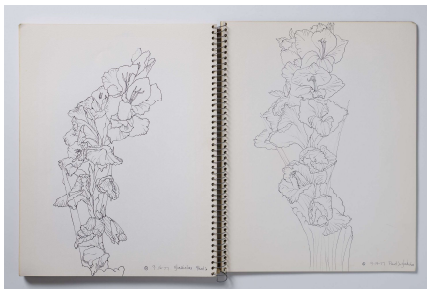
Ruth Asawa
Untitled drawing (SB.076), c. 1974–6
Ink on paper in spiral-bound sketchbook
11 x 8 1/2 in. (27.9 × 21.6 cm)
Private collection



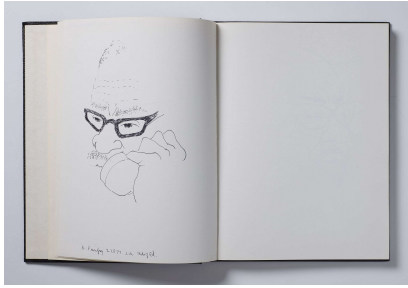
Ruth Asawa
Drawing for *The Japanese Tea Garden Golden Gate Park* pamphlet (SB.091), 1976
Ink on paper in spiral-bound sketchbook
11 x 8 1/2 in. (27.9 × 21.6 cm)
Private collection



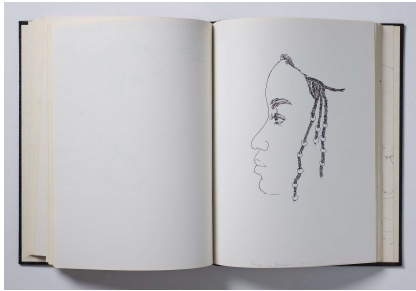
Ruth Asawa
Untitled double-page sketch of cosmos (SB.087), c.
1976–1989
Ink on paper in spiral-bound sketchbook
14 1/8 x 22 1/2 in. (35.9 × 57.2 cm)
Private collection



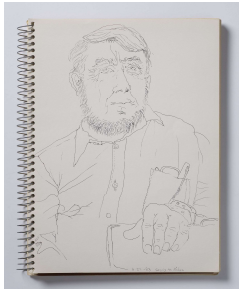
Ruth Asawa
9.16.77 Gladiolas Paul's; Paul's Gladiolas 9.14.77
(SB.092), 1977
Ink on paper in spiral-bound sketchbook
14 1/8 × 22 3/8 in. (35.9 × 56.8 cm)
Private collection



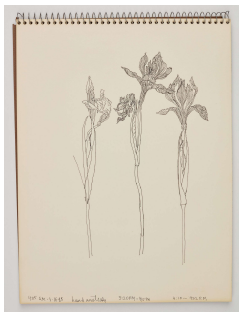
Ruth Asawa
N. Purifoy 2.28.77 *LA Bd of Ed.* (SB.102), 1977
 Ink on paper in hardback sketchbook
 11 x 8 1/2 in. (27.9 x 21.6 cm)
 Private collection



Ruth Asawa
Suzanne Jackson, 2.11.77 (SB.100), 1977
 Ink on paper in hardback sketchbook
 11 x 8 1/2 in. (27.9 x 21.6 cm)
 Private collection



Ruth Asawa
6.23.83 Venice to Milan (SB.137), 1983
 Ink on paper in spiral-bound sketchbook
 11 x 8 1/2 in. (27.9 x 21.6 cm)
 Private collection

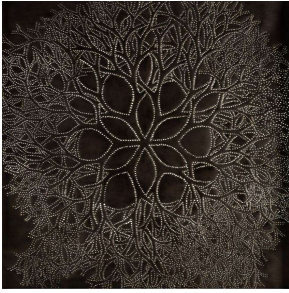


Ruth Asawa
4:05 AM–3.16.85 hand unsteady 3:20PM–4:07PM
4:10–4:32PM (SB.157), 1985
 Ink on paper in spiral-bound sketchbook
 12 x 9 in. (30.5 x 22.9 cm)
 Private collection



Ruth Asawa
Hudson's Wildflowers for Mother's Day, 5.14.95
 (SB.200), 1995
 Ink on paper in spiral-bound sketchbook
 17 x 14 1/8 in. (43.2 x 35.9 cm)
 Private collection

West Window



Ruth Asawa

Untitled (SD.254, Tied-Wire Sculpture Drawing with Six Petals in Center), c. late 1960s

Tin

32 $\frac{3}{4}$ x 32 $\frac{3}{4}$ x $\frac{1}{4}$ in. (83.2 x 83.2 x 0.6 cm)

Private collection