

## Trust Me

PRESS



### Moyra Davey

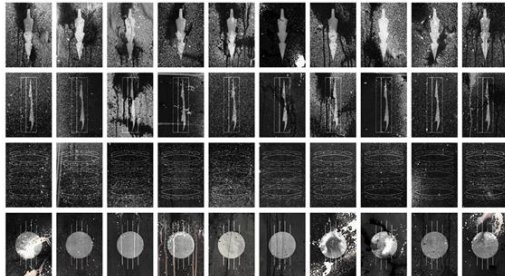
*Trust Me*, 2011

Chromogenic prints, collaged printed labels, tape, cancelled postage stamps, and fiber-tipped pen

Sheet (each): 18 x 12in. (45.7 x 30.5 cm)

Gift of Laura Belgray and Steven Eckler

2020.181a-p



### Dakota Mace

*Béésh Łigaii II*, 2022

From the series *Béésh Łigaii*

40 chemigrams

Unique

Sheet (each): 6 x 4in. (15.2 x 10.2 cm)

Mount: 24 x 40in. (61 x 101.6 cm)

Frame: 38 x 51in. (96.5 x 129.5 cm)

Purchase with funds from the Photography Committee



### Genesis Báez

*Crossing Time*, 2022

Inkjet print

Sheet: 33 x 24 in. (83.8 x 61 cm)

Purchase with funds from the Anne Levy Fund



### Alvin Baltrop

*The Piers (collapsed architecture, couple buttfucking)*, 1979

Gelatin silver print

Sheet: 8 x 10in. (20.3 x 25.4 cm)

Image: 4 5/8 x 6 3/4in. (11.7 x 17.1 cm)

Purchase with funds from the Photography Committee

2018.186

Date



**Barbara Hammer**

*Barbara & Terry*, 1972

Gelatin silver print on board

Sheet: 9 1/8 x 7in. (23.2 x 17.8 cm)

Purchase with funds from the Director's Discretionary Fund  
2018.149



**Laura Aguilar**

*Plush Pony #2*, 1992

From the series *Plush Pony*

Gelatin silver print

Sheet: 8 x 9 7/8in. (20.3 x 25.1 cm)

Purchase with funds from the Director's Discretionary Fund  
2019.396



**Lola Flash**

*Untitled, Provincetown, MA*, 1990

From the series *Provincetown*

Chromogenic print

Sheet: 24 x 20 in. (61 x 50.8 cm)

Purchase with funds from the Photography Committee  
2022.40



**D'Angelo Lovell Williams**

*Elysian*, 2018

Inkjet print

Sheet (sight): 44 9/16 x 29 1/2in. (113.2 x 74.9 cm)

Purchase with funds from the Photography Committee  
2020.129

Date



**Mary Manning**

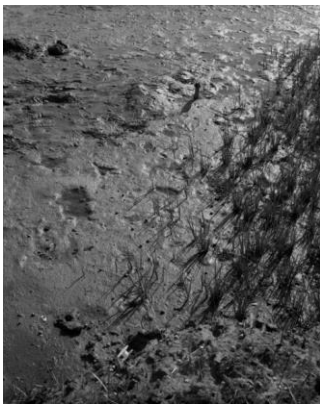
*His Estate, 2022*

Chromogenic prints, mat board, and artist's frame

Sheet: 33 x 22 1/4 in. (83.8 x 56.5 cm)

Frame: 33 1/4 x 22 1/2 x 1 1/2 in. (84.5 x 57.2 x 3.8 cm)

Purchase with funds from the Photography Committee



**Jenny Calivas**

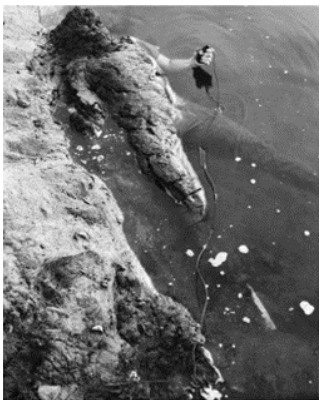
*Self-Portrait While Buried #12, 2021*

From the series *Self-Portraits While Buried*

Gelatin silver print

Sheet: 8 x 10 in. (20.3 x 25.4 cm)

Purchase with funds from the Anne Levy Fund



**Jenny Calivas**

*Self-Portrait While Buried #16, 2021*

From the series *Self-Portraits While Buried*

Gelatin silver print

Sheet: 8 x 10 in. (20.3 x 25.4 cm)

Purchase with funds from the Anne Levy Fund



**Genesis Báez**

*The Sound of a Circle, 2018*

Inkjet print

Sheet: 24 x 33 in. (61 x 83.8 cm)

Purchase with funds from the Anne Levy Fund

Date



**Mary Manning**

*Milling Around the Village, 2022*

Chromogenic prints, mat board, and artist's frame

Sheet: 30 x 20 in. (76.2 x 50.8 cm)

Frame: 30 1/4 x 20 1/4 x 1 1/2 in. (76.5 x 51.4 x 3.8 cm)

Purchase with funds from the Photography Committee



**D'Angelo Lovell Williams**

*Nah, 2018*

Inkjet print

Sheet (sight): 44 1/2 x 29 1/2 in. (113 x 74.9 cm)

Purchase with funds from the Photography Committee

2020.130



**Laura Aguilar**

*Will Work For #4, 1993*

From the series *Will Work For*

Gelatin silver print

Sheet: 19 7/8 x 15 15/16 in. (50.5 x 40.5 cm)

Purchase with funds from the Director's Discretionary Fund

2019.394



**Muriel Hasbun**

*Todos los santos (Volcán de Izalco, amén) / All the Saints (Izalco Volcano, Amen), 1995-1996, printed 1996*

From the series *Santos y sombras (Saints and Shadows)*

Gelatin silver print

Sheet: 16 x 20 in. (40.6 x 50.8 cm)

Image: 14 x 18 in. (35.6 x 45.7 cm)

Purchase with funds from the Photography Committee

2022.212

Date



**Genesis Báez**

*Parting (Braid)*, 2021

Inkjet print

Sheet: 24 x 33 in. (61 x 83.8 cm)

Purchase with funds from the Anne Levy Fund



**Mary Manning**

*Mulberry (for Moyra D)*, 2020

Chromogenic print

Sheet: 15 x 10 in. (38.1 x 25.4 cm)

Frame: 15 1/2 x 10 1/2 x 1 1/4 in. (39.4 x 26.7 x 3.2 cm)

Purchase with funds from the Photography Committee



**Lola Flash**

*4 ray*, 1991

From the series *Provincetown*

Chromogenic print

Sheet: 24 x 20 in. (61 x 50.8 cm)

Purchase, with funds from the Photography Committee  
2022.38



**Muriel Hasbun**

*X post facto (6.7)*, 2009-2013, printed 2009-2013

From the series *X post facto (équis anónimo)*

Pigmented inkjet print

Sheet: 40 x 30 in. (101.6 x 76.2 cm)

Framed: 41 x 32 in. (104.1 x 81.3 cm)

Purchase with funds from the Photography Committee  
2022.215

Date



**Muriel Hasbun**

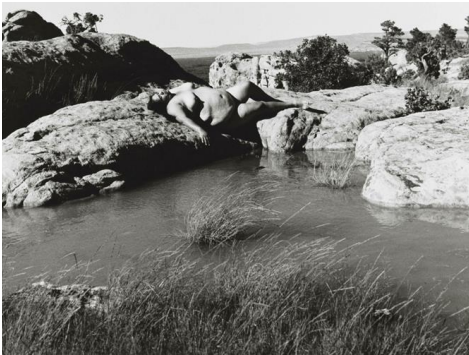
*¿Sólo una sombra? (Ester III)*, 1993-1994, printed 1994  
From the series *Santos y sombras (Saints and Shadows)*

Gelatin silver print

Sheet: 20 x 16 in. (50.8 x 40.6 cm)

Image: 18 x 13 ½ in. (46 x 35 cm)

Purchase with funds from the Photography Committee  
2022.211



**Laura Aguilar**

*Nature Self Portrait #6*, 1996

From the series *Nature Self Portrait*

Gelatin silver print

Sheet: 16 x 20in. (40.6 x 50.8 cm)

Purchase with funds from the Director's Discretionary Fund  
2019.395