

## Edward Hopper's New York

### Checklist (final)

October 19, 2022–March 5, 2023

### ENTRANCE



*Approaching a City*, 1946

Oil on canvas

27 1/18 x 36 in. (68.9 x 91.4 cm)

The Phillips Collection, Washington, DC; acquired 1947



*New York City (From an Elevated Railroad)*, c. 1916,  
35 mm film transferred to digital video, black-and-white, silent; 4:37 min

National Archives and Records Administration,  
Washington D.C.; Ford Motor Company Collection



*New York Pavements*, 1924–25

Oil on canvas

24 3/4 x 29 3/4 in. (62.9 x 75.6 cm)

Chrysler Museum of Art, Norfolk, VA; gift of Walter P. Chrysler Jr.

### FIRST IMPRESSIONS (FRONT WALL)



*Study of Three Men in Suits and Hats Seated on Bench*, 1895–99

Pen and ink and graphite pencil on paper

9 7/8 x 7 11/16 in. (25.1 x 19.5 cm)

Whitney Museum of American Art, New York;  
Josephine N. Hopper Bequest 70.1556.79



*Sketches of an 'L' Guard*, 1899

Pen and ink and graphite pencil on paper

10 7/16 x 7 7/8 in. (26.5 x 20 cm)

Whitney Museum of American Art, New York;  
Josephine N. Hopper Bequest 70.1561.191



*Mounted Cop*, 1899–1906  
 Pen and ink and graphite pencil on paper  
 10 5/8 x 8 5/16 in. (27 x 21.1 cm)  
 Whitney Museum of American Art, New York;  
 Josephine N. Hopper Bequest 70.630a-b



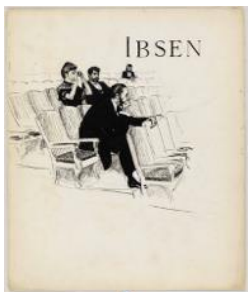
*Moving Train*, c. 1900  
 Pen and ink on paper  
 4 x 4 15/16 in. (10.2 x 12.5 cm)  
 Whitney Museum of American Art, New York;  
 Josephine N. Hopper Bequest 70.1561.94



*Ibsen (At the Theater)*, c. 1900  
 Brush and ink, ink wash, opaque watercolor, and  
 graphite pencil on paper  
 21 3/4 x 14 15/16 in. (55.2 x 37.9 cm)  
 Whitney Museum of American Art, New York;  
 Josephine N. Hopper Bequest 70.1355



*Three Men at Art Exhibition*, 1900–03  
 Graphite pencil on paper  
 9 3/8 x 6 1/8 in. (23.8 x 15.6 cm)  
 Whitney Museum of American Art, New York;  
 Josephine N. Hopper Bequest 70.1560.51



*Ibsen*, c. 1900–06  
 Pen and ink, opaque watercolor, and graphite pencil  
 on paper  
 14 1/2 x 11 11/16 in. (36.8 x 29.7 cm)  
 Whitney Museum of American Art, New York;  
 Josephine N. Hopper Bequest 70.1565.51a-b



*Solitary Figure in a Theater*, c. 1902–04  
Oil on board  
12 1/2 x 9 5/16 in. (31.8 x 23.7 cm)  
Whitney Museum of American Art, New York;  
Josephine N. Hopper Bequest 70.1418



*Self-Portrait*, 1903–06  
Oil on canvas  
25 15/16 x 22 1/8 in. (65.9 x 56.2 cm)  
Whitney Museum of American Art, New York;  
Josephine N. Hopper Bequest 70.1253



*Group of Musicians in an Orchestra Pit*, c. 1904–06  
Oil on canvas  
15 1/8 x 12 1/16 in. (38.4 x 30.6 cm)  
Whitney Museum of American Art, New York;  
Josephine N. Hopper Bequest 70.1243



*Ferry Slip*, c. 1904–06  
Oil on cardboard  
12 3/8 x 9 5/16 in. (31.4 x 23.7 cm)  
Whitney Museum of American Art, New York;  
Josephine N. Hopper Bequest 70.1426



*Rooftops of Ferry Slip*, c. 1904–06  
Oil on cardboard  
17 x 12 5/16 in. (43.2 x 31.3 cm)  
Whitney Museum of American Art, New York;  
Josephine N. Hopper Bequest 70.1398



*The El Station*, 1908

Oil on canvas

20 1/4 x 29 5/16 in. (51.4 x 74.5 cm)

Whitney Museum of American Art, New York;

Josephine N. Hopper Bequest 70.1182



*Tugboat with Black Smokestack*, 1908

Oil on canvas

20 3/8 x 29 5/16 in. (51.8 x 74.5 cm)

Whitney Museum of American Art, New York;

Josephine N. Hopper Bequest 70.1192



*Blackwell's Island*, 1911

Oil on canvas

24 3/8 x 29 5/16 in. (61.9 x 74.5 cm)

Whitney Museum of American Art, New York;

Josephine N. Hopper Bequest 70.1188



*South of Washington Square*, c. 1915

Charcoal on cardboard

17 1/4 x 25 in. (43.8 x 63.5 cm)

Private collection



*At the Theater*, c. 1916–22

Brush and ink, ink wash, opaque watercolor, and fabricated chalk on paper

18 1/2 x 14 7/8 in. (47 x 37.8 cm)

Whitney Museum of American Art, New York;

Josephine N. Hopper Bequest 70.1440

## FIRST IMPRESSIONS (SOUTH GALLERY)



*Le Pont des Arts*, 1907

Oil on canvas

23 11/16 x 28 13/16 in. (60.2 x 73.2 cm)

Whitney Museum of American Art, New York;

Josephine N. Hopper Bequest 70.1181



*Le Bistro or The Wine Shop*, 1909

Oil on canvas

24 x 28 7/8 in. (61 x 73.3 cm)

Whitney Museum of American Art, New York;

Josephine N. Hopper Bequest 70.1187



*New York Corner (Corner Saloon)*, 1913

Oil on canvas

24 x 29 in. (61 x 73.6 cm)

Iris & B. Gerald Cantor Center for Visual Arts, Stanford University, CA; museum purchase made possible by the Halperin Art Acquisition Fund, an anonymous estate, Roberta & Steve Denning, Susan & John Diekman, Jill & John Freidenrich, Deedee & Burton McMurtry, Cantor Membership Acquisitions Fund, an anonymous acquisitions fund, Pauline Brown Acquisitions Fund, C. Diane Christensen, an anonymous donor, Modern & Contemporary Art Acquisitions Fund, and Kazak Acquisitions Fund



*Queensborough Bridge*, 1913

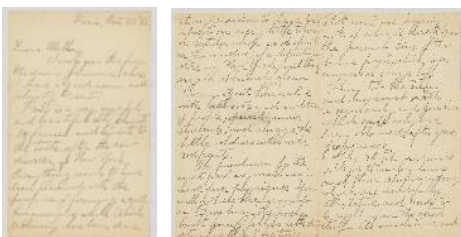
Oil on canvas

25 7/8 x 38 1/8 in. (65.7 x 96.8 cm)

Whitney Museum of American Art, New York;

Josephine N. Hopper Bequest 70.1184

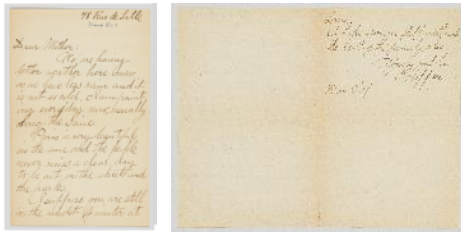
## Vitrine: Paris and New York



Letter from Edward Hopper to his mother, Elizabeth Griffiths Smith Hopper, Paris, October 30, 1906 (original and facsimile)

The Sanborn Hopper Archive at the Whitney Museum of American Art, Frances Mulhall Achilles Library and Archives, New York; gift of the Arthayer R. Sanborn Hopper Collection Trust EJHA.2437





Letter from Edward Hopper to his mother, Elizabeth Griffiths Smith Hopper, Paris, March 3, 1907 (original and facsimile)

The Sanborn Hopper Archive at the Whitney Museum of American Art, Frances Mulhall Achilles Library and Archives, New York; gift of the Arthayer R. Sanborn Hopper Collection Trust EJHA.2455



Exhibition brochure for *Early Paintings by Edward Hopper*, Frank K. M. Rehn Galleries, New York, January 6–February 1, 1941

The Sanborn Hopper Archive at the Whitney Museum of American Art, Frances Mulhall Achilles Library and Archives, New York; gift of the Arthayer R. Sanborn Hopper Collection Trust EJHA.0654



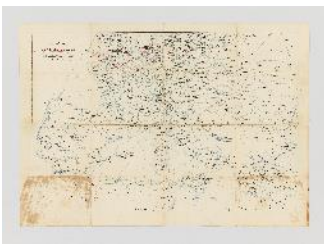
Postcard from Hopper to his mother, Elizabeth Griffiths Smith Hopper, Paris, January 21, 1907 (original and facsimile)

The Sanborn Hopper Archive at the Whitney Museum of American Art, Frances Mulhall Achilles Library and Archives, New York; gift of the Arthayer R. Sanborn Hopper Collection Trust EJHA.2449



Hopper in Paris, 1907

The Sanborn Hopper Archive at the Whitney Museum of American Art, Frances Mulhall Achilles Library and Archives, New York; gift of the Arthayer R. Sanborn Hopper Collection Trust EJHA.0984



Map of Central and Southern Europe, c. 1907

One folded sheet

The Sanborn Hopper Archive at the Whitney Museum of American Art, Frances Mulhall Achilles Library and Archives, New York; gift of the Arthayer R. Sanborn Hopper Collection Trust EJHA.3831



Hopper in Paris, 1907

The Sanborn Hopper Archive at the Whitney Museum of American Art, Frances Mulhall Achilles Library and Archives, New York; gift of the Arthayer R. Sanborn Hopper Collection Trust EJHA.0981

## THE CITY IN PRINT



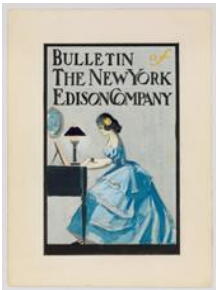
*Boy and Moon*, 1906–07

Pen, brush and ink, and transparent and opaque watercolor on paper

21 13/16 x 14 13/16 in. (55.4 x 37.6 cm)

Whitney Museum of American Art, New York;

Josephine N. Hopper Bequest 70.1349



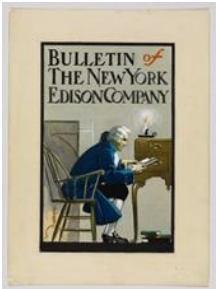
*Bulletin of the New York Edison Company*, 1906–07

Transparent and opaque watercolor and graphite pencil on paper

10 1/2 x 7 3/4 in. (26.7 x 19.7 cm)

Whitney Museum of American Art, New York;

Josephine N. Hopper Bequest 70.1607



*Bulletin of the New York Edison Company*, 1906–07

Pen and ink, transparent and opaque watercolor and graphite pencil on paper

10 1/2 x 7 5/8 in. (26.7 x 19.4 cm)

Whitney Museum of American Art, New York;

Josephine N. Hopper Bequest 70.1609



*A Theater Entrance*, 1906–10

Watercolor, brush and ink, and graphite pencil on paper

19 11/16 x 14 3/4 in. (50 x 37.5 cm)

Whitney Museum of American Art, New York;

Josephine N. Hopper Bequest 70.1378



*New York and Its Houses*, c. 1906–10

Brush and ink, transparent and opaque watercolor, and graphite pencil on paper

21 13/16 x 14 13/16 in. (55.4 x 37.6 cm)

Whitney Museum of American Art, New York;

Josephine N. Hopper Bequest 70.1347



*Bricklayer's Coffee Break*, 1907–10  
Pen and brown ink, transparent and opaque watercolor, and graphite pencil on paper  
17 3/16 x 11 3/8 in. (43.7 x 28.9 cm)  
Whitney Museum of American Art, New York;  
Josephine N. Hopper Bequest 70.1614



*In a Restaurant*, c. 1916–25  
Charcoal on paper  
26 11/16 x 21 5/8 in. (67.8 x 54.9 cm)  
Whitney Museum of American Art, New York;  
Josephine N. Hopper Bequest 70.1449



*Night on the El Train*, 1918  
Etching  
Sheet: 12 1/4 x 14 in. (31.1 x 35.6 cm); plate: 7 3/8 x 7 15/16 in. (18.8 x 20.1 cm)  
Philadelphia Museum of Art; purchased with the Thomas Skelton Harrison Fund, 1962



*A Corner*, 1919  
Etching  
Sheet: 9 1/16 x 9 13/16 in. (23 x 24.9 cm); plate: 4 1/4 x 4 15/16 in. (10.8 x 12.5 cm)  
Whitney Museum of American Art, New York;  
Josephine N. Hopper Bequest 70.1011



*The El Station*, 1919–23  
Etching  
Sheet: 9 9/16 x 11 15/16 in. (24.3 x 30.3 cm); plate: 6 7/8 x 8 13/16 in. (17.5 x 22.4 cm)  
Whitney Museum of American Art, New York;  
Josephine N. Hopper Bequest 70.1056





*House Tops*, 1921

Etching

Sheet: 9 1/2 x 11 1/2 in. (24.1 x 29.2 cm); plate: 5 7/8 x 7 15/16 in. (14.9 x 20.1 cm)

Philadelphia Museum of Art; purchased with the Thomas Skelton Harrison Fund, 1962



*Night in the Park*, 1921

Etching

Sheet: 13 1/2 x 14 7/8 in. (34.3 x 37.8 cm); plate: 6 7/8 x 8 1/4 in. (17.5 x 21 cm)

Whitney Museum of American Art, New York; Josephine N. Hopper Bequest 70.1046



*Night Shadows*, 1921

Etching

Sheet: 12 x 15 15/16 in. (30.5 x 40.5 cm); plate: 6 7/8 x 8 1/4 in. (17.5 x 21 cm)

Whitney Museum of American Art, New York; Josephine N. Hopper Bequest 70.1047



*The Lonely House*, 1922

Etching

Sheet: 13 3/8 x 16 11/16 in. (34 x 42.4 cm); plate: 7 7/8 x 9 3/4 in. (20 x 24.8 cm)

Whitney Museum of American Art, New York; Josephine N. Hopper Bequest 70.1040



*The Open Window*, c. 1918-19

Etching

Sheet: 9 1/4 x 10 1/2 in. (23.5 x 26.7 cm); plate: 3 15/16 x 4 7/8 in. (10 x 12.4 cm)

Whitney Museum of American Art, New York; purchase, with funds from Brooke Garber Neidich, Beth Rudin DeWoody, Laurie Tisch and Joanne Leonhardt Cassullo 2000.118



*East Side Interior*, 1922

Etching

Sheet: 13 1/2 x 18 in. (34.3 x 45.7 cm); plate: 7 7/8 x 9 13/16 in. (20 x 24.9 cm)

Whitney Museum of American Art, New York;  
Josephine N. Hopper Bequest 70.1020



*Evening Wind*, 1921

Etching

Sheet: 13 3/8 x 16 in. (34 x 40.6 cm); plate: 6 7/8 x 8 1/4 in. (17.5 x 21 cm)

Whitney Museum of American Art, New York;  
Josephine N. Hopper Bequest 70.1022



*Girl at a Sewing Machine*, c. 1921

Oil on canvas

19 x 18 in. (48.3 x 46 cm)

Museo Nacional Thyssen-Bornemisza, Madrid



*Office at Night*, 1940

Oil on canvas

22 3/16 x 25 1/8 in. (56.4 x 63.8 cm)

Walker Art Center, Minneapolis; gift of the T.B. Walker  
Foundation, Gilbert M. Walker Fund, 1948

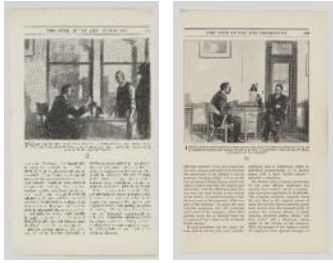
## Wall case: System Magazine



Selection of Hopper's Illustrations for Carroll D.

Murphy's article "What Makes Men Buy?," *System, the Magazine of Business*, September 1912

The Sanborn Hopper Archive at the Whitney Museum of American Art, Frances Mulhall Achilles Library and Archives, New York; gift of the Arthayer R. Sanborn Hopper Collection Trust EJHA.0141-0142



Selection of Hopper's Illustrations for Carroll D. Murphy's article "The Spur of Pay and Promotion," *System, the Magazine of Business*, June 1913  
The Sanborn Hopper Archive at the Whitney Museum of American Art, Frances Mulhall Achilles Library and Archives, New York; gift of the Arthayer R. Sanborn Hopper Collection Trust EJHA.0151-0153



One of Hopper's Illustration for Charles Weinfeld's article "How I Sell Life Insurance," *System, the Magazine of Business*, November 1913  
The Sanborn Hopper Archive at the Whitney Museum of American Art, Frances Mulhall Achilles Library and Archives, New York; gift of the Arthayer R. Sanborn Hopper Collection Trust EJHA.0160

### Wall case: Magazine covers



Cover art by Hopper for *Hotel Management*, *Morse Dry Dock Dial*, *La France*, *Tavern Topics*, *The Express Messenger*, and *Wells Fargo Messenger*, 1917–25  
The Sanborn Hopper Archive at the Whitney Museum of American Art, Frances Mulhall Achilles Library and Archives, New York; gift of the Arthayer R. Sanborn Hopper Collection Trust

26 covers exhibited (one example illustrated: *Morse Dry Dock Dial*, March 1921; EJHA.0088)

### Vitrine: Advertisements



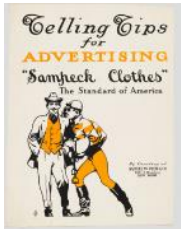
Entries from 1920 in Hopper's *Artist's Ledger*—*Book IV*, 1913–67  
Whitney Museum of American Art, New York; gift of Loyd Goodrich 96.211



Wearing Apparel Show catalogue and directory, Madison Square Garden, New York, 1910  
The Sanborn Hopper Archive at the Whitney Museum of American Art, Frances Mulhall Achilles Library and Archives, New York; gift of the Arthayer R. Sanborn Hopper Collection Trust EJHA.0002



Brighton Flat Clasp Garters, c. 1909–11  
 The Sanborn Hopper Archive at the Whitney Museum of American Art, Frances Mulhall Achilles Library and Archives, New York; gift of the Arthayer R. Sanborn Hopper Collection Trust EJHA.0129



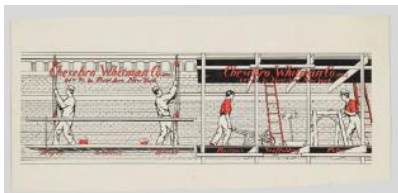
Samuel W. Peck & Co. ("Sampeck clothes"), c. 1911–12  
 The Sanborn Hopper Archive at the Whitney Museum of American Art, Frances Mulhall Achilles Library and Archives, New York; gift of the Arthayer R. Sanborn Hopper Collection Trust EJHA.0135



National Cigar Stands, c. 1911–12  
 The Sanborn Hopper Archive at the Whitney Museum of American Art, Frances Mulhall Achilles Library and Archives, New York; gift of the Arthayer R. Sanborn Hopper Collection Trust EJHA.0138



Brigham, Hopkins Company Straw Hats (brochure), c. 1908  
 The Sanborn Hopper Archive at the Whitney Museum of American Art, Frances Mulhall Achilles Library and Archives, New York; gift of the Arthayer R. Sanborn Hopper Collection Trust EJHA.0004



Scaffolding by Chesebro Whitman Co. Inc, c. 1911–12  
 The Sanborn Hopper Archive at the Whitney Museum of American Art, Frances Mulhall Achilles Library and Archives, New York; gift of the Arthayer R. Sanborn Hopper Collection Trust EJHA.0137



RB Fashion-Clothes, c. 1911–12  
 The Sanborn Hopper Archive at the Whitney Museum of American Art, Frances Mulhall Achilles Library and Archives, New York; gift of the Arthayer R. Sanborn Hopper Collection Trust EJHA.0008





Brandegee Kincaid & Co., c. 1909-11  
The Sanborn Hopper Archive at the Whitney Museum of American Art, Frances Mulhall Achilles Library and Archives, New York; gift of the Arthayer R. Sanborn Hopper Collection Trust EJHA.0127



Knothe Unseen Suspenders, c. 1917-20  
The Sanborn Hopper Archive at the Whitney Museum of American Art, Frances Mulhall Achilles Library and Archives, New York; gift of the Arthayer R. Sanborn Hopper Collection Trust EJHA.0026

## THE WINDOW



*New York Interior*, c. 1921  
Oil on canvas  
24 5/16 x 29 3/8 in. (61.8 x 74.6 cm)  
Whitney Museum of American Art, New York;  
Josephine N. Hopper Bequest 70.1200



*New York Restaurant*, c. 1922  
Oil on canvas  
24 x 30 in. (61 x 76.2 cm)  
Muskegon Museum of Art, MI; Hackley Picture Fund



*Automat*, 1927  
Oil on canvas  
28 1/8 x 35 in. (71.4 x 88.9 cm)  
Des Moines Art Center, IA; purchased with funds from the Edmundson Art Foundation, Inc.





*Drug Store*, 1927  
Oil on canvas  
29 x 40 1/8 in. (73.7 x 101.9 cm)  
Museum of Fine Arts, Boston; bequest of John T. Spaulding



*Night Windows*, 1928  
Oil on canvas  
29 x 34 in. (73.7 x 86.4 cm)  
The Museum of Modern Art, New York; gift of John Hay Whitney



*Tables for Ladies*, 1930  
Oil on canvas  
48 1/4 x 60 1/4 in. (122.6 x 153 cm)  
Metropolitan Museum of Art, New York; George A. Hearn Fund, 1931



*Room in Brooklyn*, 1932  
Oil on canvas  
29 1/8 x 34 in. (74 x 86.4 cm)  
Museum of Fine Arts, Boston; The Hayden Collection—Charles Henry Hayden Fund



*Room in New York*, 1932  
Oil on canvas  
29 x 36 in. (73.7 x 91.4 cm)  
Sheldon Museum of Art, University of Nebraska—Lincoln; Anna R. and Frank M. Hall Charitable Trust

## THE HORIZONTAL CITY



*From Williamsburg Bridge, 1928*  
Oil on canvas  
29 3/8 x 43 3/4 in. (74.6 x 111.1 cm)  
Metropolitan Museum of Art, New York; George A. Hearn Fund, 1937



*Manhattan Bridge Loop, 1928*  
Oil on canvas  
35 x 60 in. (88.9 x 152.4 cm)  
Addison Gallery of American Art, Phillips Academy, Andover, MA; gift of Stephen C. Clark, Esq.



*Blackwell's Island, 1928*  
Oil on canvas  
34 1/2 x 59 1/2 in. (87.6 x 151.1 cm)  
Crystal Bridges Museum of American Art, Bentonville, AR



*Early Sunday Morning, 1930*  
Oil on canvas  
35 3/16 x 60 1/4 in. (89.4 x 153 cm)  
Whitney Museum of American Art, New York; purchase, with funds from Gertrude Vanderbilt Whitney 31.426



*Apartment Houses, East River, c. 1930*  
Oil on canvas  
35 1/16 x 60 1/8 in. (89.1 x 152.7 cm)  
Whitney Museum of American Art, New York; Josephine N. Hopper Bequest 70.1211



*Macomb's Dam Bridge*, 1935

Oil on canvas

35 x 60 3/16 in. (88.9 x 152.9 cm)

Brooklyn Museum, New York; bequest of Mary T. Cockcroft



*House at Dusk*, 1935

Oil on canvas

36 1/4 x 50 in. (92.1 x 127 cm)

Virginia Museum of Fine Arts, Richmond; John Barton Payne Fund

## WASHINGTON SQUARE



*Self-Portrait*, 1925–30

Oil on canvas

25 3/8 x 20 3/8 in. (64.5 x 51.8 cm)

Whitney Museum of American Art, New York;  
Josephine N. Hopper Bequest 70.1165



*From My Window*, 1915–18

Drypoint

Sheet: 10 3/8 x 8 3/4 in. (26.4 x 22.2 cm); plate: 6 7/8 x 5 7/8 in. (17.5 x 14.9 cm)

Philadelphia Museum of Art; purchased with the  
Thomas Skelton Harrison Fund, 1962



*On My Roof*, 1915–18

Drypoint

Sheet: 8 5/16 x 9 1/4 in. (21.1 x 23.5 cm); plate: 5 x 5 15/16 in. (12.7 x 15.1 cm)

Whitney Museum of American Art, New York;  
Josephine N. Hopper Bequest 70.1066



*Hopper's Hat on His Etching Press*, after 1924  
Fabricated chalk on paper  
11 1/16 x 15 1/8 in. (28.1 x 38.4 cm)  
Whitney Museum of American Art, New York;  
Josephine N. Hopper Bequest 70.344



*Study of Fireplace and Chair*, c. 1925–30  
Pen and ink on board  
12 3/16 x 7 in. (31 x 17.8 cm)  
Whitney Museum of American Art, New York;  
Josephine N. Hopper Bequest 70.811



*Skylights*, 1926  
Conté crayon on paper  
12 x 19 in. (30.5 x 48.3 cm)  
Collection of Kirkland Hall; courtesy Megan  
Moynihan/Oyster Works, Charlestown, RI



*Study of Jo Hopper Reading*, c. 1924–30  
Pen and ink on paper  
11 x 10 in. (27.9 x 25.4 cm)  
Whitney Museum of American Art, New York;  
Josephine N. Hopper Bequest 70.589



*Study of Jo Hopper Reading*, 1925  
Fabricated chalk on paper  
22 x 15 in. (55.9 x 38.1 cm)  
Whitney Museum of American Art, New York;  
Josephine N. Hopper Bequest 70.905



*Study of Jo Hopper Reading*, 1934–35  
Charcoal and graphite pencil on paper  
15 1/8 x 12 1/8 in. (38.4 x 30.8 cm)  
Whitney Museum of American Art, New York;  
Josephine N. Hopper Bequest 70.909



*Jo Hopper Reading*, c. 1935–40  
Fabricated chalk and charcoal on paper  
15 1/16 x 22 1/8 in. (38.3 x 56.2 cm)  
Whitney Museum of American Art, New York;  
Josephine N. Hopper Bequest 70.293



*Study of Jo Hopper Seated*, c. 1945–50  
Fabricated chalk on paper  
22 1/8 x 14 15/16 in. (56.2 x 37.9 cm)  
Whitney Museum of American Art, New York;  
Josephine N. Hopper Bequest 70.663



*Jo Painting*, 1936  
Oil on canvas  
18 3/16 x 16 3/16 in. (46.2 x 41.1 cm)  
Josephine N. Hopper Bequest 70.1171



*Manhattan Bridge*, 1925  
Watercolor over graphite on paper  
13 7/8 x 19 15/16 in. (35.3 x 50.6 cm)  
Harvard Art Museums / Fogg Museum, Cambridge, MA; Louise E. Bettens Fund





*Skyline near Washington Square, 1925*  
 Watercolor and graphite on paper  
 15 1/16 x 21 9/16 in. (38.3 x 54.8 cm)  
 Munson-Williams-Proctor Arts Institute, Utica, NY;  
 Edward W. Root Bequest



*Manhattan Bridge, 1925-26*  
 Watercolor and graphite pencil on paper  
 13 15/16 x 19 15/16 in. (35.4 x 50.6 cm)  
 Whitney Museum of American Art, New York;  
 Josephine N. Hopper Bequest 70.1098



*Roofs, Washington Square, 1926*  
 Watercolor over charcoal on paper  
 13 7/8 x 19 7/8 in. (35.2 x 50.5 cm)  
 Carnegie Museum of Art, Pittsburgh; Bequest of Mr.  
 and Mrs. James H. Beal



*Manhattan Bridge Entrance, 1926*  
 Watercolor on paper  
 14 x 20 in. (35.6 x 50.8 cm)  
 Private collection



*Rooftops, 1926*  
 Watercolor and graphite pencil on paper  
 12 7/8 x 19 7/8 in. (32.7 x 50.5 cm)  
 Whitney Museum of American Art, New York;  
 Josephine N. Hopper Bequest 70.1114



*My Roof*, 1928  
Watercolor on paper  
14 x 20 in. (35.6 x 50.8 cm)  
Collection of the Thyssen-Bornemisza Family



*Town Square (Washington Square and Judson Tower)*, 1932  
Charcoal on paper  
12 x 19 in. (30.48 x 48.26 cm)  
Sheldon Museum of Art, University of Nebraska—Lincoln, Anna R. and Frank M. Hall Charitable Trust



Josephine Nivison Hopper  
*74 Stairs to Studio at Three Washington Square North*, c. 1932  
Watercolor, opaque watercolor, and graphite pencil on paper  
19 15/16 x 13 15/16 in. (50.6 x 35.4 cm)  
Edward Hopper House Museum & Study Center, Nyack, New York; The Sanborn Josephine Nivison Hopper Collection



Josephine Nivison Hopper  
*Stove and Fireplace, Three Washington Square North*, c. 1932  
Watercolor and graphite pencil on paper  
20 1/16 x 14 in. (51 x 35.6 cm)  
Edward Hopper House Museum & Study Center, Nyack, New York; The Sanborn Josephine Nivison Hopper Collection



Josephine Nivison Hopper  
*Back of E. Hopper*, c. 1932  
Watercolor and graphite pencil on paper  
19 3/4 x 13 7/8 in. (50.2 x 35.2 cm)  
Whitney Museum of American Art, New York; Josephine N. Hopper Bequest

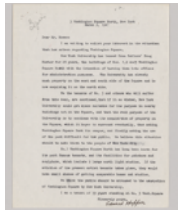


*Visual Arts from America* (documentary series produced, by the United States Information Agency (USIA) / Voice of America (VOA), with segment on Edward Hopper and Josephine Nivison Hopper, 1965, Digital video, black-and-white, sound; 2:22 min National Archives and Records Administration, Washington, D.C.

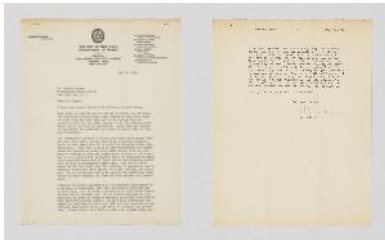
## Vitrine: the Hoppers' Advocacy



Letter from Commissioner for New York City Department of Parks, Robert Moses, to Edward Hopper, New York, May 28, 1936  
The Sanborn Hopper Archive at the Whitney Museum of American Art, Frances Mulhall Achilles Library and Archives, New York; gift of the Arthayer R. Sanborn Hopper Collection Trust EJHA.1716



Letter from Edward Hopper to Robert Moses, Commissioner for New York City Department of Parks, March 9, 1947  
Robert Moses papers, Manuscripts and Archives Division, The New York Public Library



Letter from Robert Moses, Commissioner for New York City Department of Parks, to Edward Hopper, March 11, 1947  
The Sanborn Hopper Archive at the Whitney Museum of American Art, Frances Mulhall Achilles Library and Archives, New York; gift of the Arthayer R. Sanborn Hopper Collection Trust EJHA.1716



Jo Hopper's notebook, "Re: 3 Wash. Square," 1947  
The Sanborn Hopper Archive at the Whitney Museum of American Art, Frances Mulhall Achilles Library and Archives, New York; gift of the Arthayer R. Sanborn Hopper Collection Trust EJHA.1572



Jo Hopper's notebook titled "Battle of Wash Sq.," 1947

The Sanborn Hopper Archive at the Whitney Museum of American Art, Frances Mulhall Achilles Library and Archives, New York EJHA.1597



News clippings, late 1940s and early 1950s

The Sanborn Hopper Archive at the Whitney Museum of American Art, Frances Mulhall Achilles Library and Archives, New York



Letter from Edward Hopper to Leon Kroll, New York, May 23, 1947

One sheet

The Sanborn Hopper Archive at the Whitney Museum of American Art, Frances Mulhall Achilles Library and Archives, New York EJHA.2057



Letter from Edward Hopper to Nathaniel M. Elias of the Washington Square Committee, New York, March 17, 1950

One sheet

The Sanborn Hopper Archive at the Whitney Museum of American Art, Frances Mulhall Achilles Library and Archives, New York EJHA.2072

## Vitrine: Edward and Jo in the Studio



Edward and Jo Hopper, c. 1947

Photograph by Bernard Hoffman

The Sanborn Hopper Archive at the Whitney Museum of American Art, Frances Mulhall Achilles Library and Archives, New York EJHA.0941



Edward Hopper with his printing press in the studio, c. 1947

Photograph by Bernard Hoffman

The Sanborn Hopper Archive at the Whitney Museum of American Art, Frances Mulhall Achilles Library and Archives, New York EJHA.0938



Edward Hopper in the studio, c. 1950  
The Sanborn Hopper Archive at the Whitney Museum of American Art, Frances Mulhall Achilles Library and Archives, New York EJHA.1002



Edward Hopper in his studio, 1950  
Photograph by George Platt Lynes  
The Sanborn Hopper Archive at the Whitney Museum of American Art, Frances Mulhall Achilles Library and Archives, New York EJHA.0914



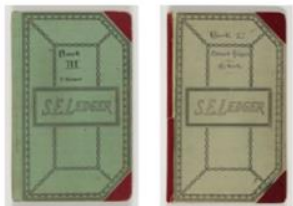
Edward and Jo Hopper in his studio, 1950  
Photograph by George Platt Lynes  
The Sanborn Hopper Archive at the Whitney Museum of American Art, Frances Mulhall Achilles Library and Archives, New York EJHA.0910



Edward Hopper in his studio, 1950  
Photograph by George Platt Lynes  
The Sanborn Hopper Archive at the Whitney Museum of American Art, Frances Mulhall Achilles Library and Archives, New York EJHA.0913



Photo-booth pictures of Edward and Jo Hopper, c. 1930s  
The Sanborn Hopper Archive at the Whitney Museum of American Art, Frances Mulhall Achilles Library and Archives, New York EJHA.0956



Edward Hopper and Josephine Nivison Hopper, *Artist's ledger—Book I* (1913-63), *Artist's ledger—Book II* (1907-62), *Artist's ledger—Book III* (1924-67)  
Whitney Museum of American Art, New York; gift of Loyd Goodrich 96.208, 96.209, 96.210

(two interior spreads and cover exhibited)



## East Windows



*The City*, 1927  
Oil on canvas  
27 1/2 x 37 in. (71.1 x 91.4 cm)  
University of Arizona Museum of Art, Tucson; gift of C. Leonard Pfeiffer



*City Roofs*, 1932  
Oil on canvas  
35 11/16 x 28 11/16 in. (90.6 x 72.9 cm)  
Whitney Museum of American Art, New York;  
bequest of Carol Franc Buck 2022.98



*November, Washington Square*, c. 1932/1959  
Oil on canvas  
34 1/8 x 50 1/4 in. (86.7 x 127.6 cm)  
Santa Barbara Museum of Art, CA; gift of Mrs. Sterling Morton to the Preston Morton Collection



Audio from *Invitation to Art* (hosted by Brian O'Doherty), *Episode 32: Conversation with Edward Hopper*, 1964, sound; 21:29 min.

Boston, MA: Thirteen WNET, Library of Congress, American Archive of Public Broadcasting (GBH and the Library of Congress), Boston, MA, and Washington, DC

## THEATER



*Two on the Aisle*, 1927  
Oil on canvas  
40 1/8 x 48 1/4 in. (101.9 x 122.5 cm)  
Toledo Museum of Art, OH; purchased with funds from the Libbey Endowment; gift of Edward Drummond Libbey



*The Balcony*, 1928

Drypoint

Sheet: 13 x 16 15/16 in. (33 x 43 cm); plate: 7 7/8 x 9 7/8 in. (20 x 25.1 cm)

Whitney Museum of American Art, New York;  
Josephine N. Hopper Bequest 70.1058



*The Sheridan Theatre*, 1937

Oil on canvas

17 x 25 in. (43.5 x 64.1 cm)

Newark Museum of Art, NJ; Felix Fuld Bequest Fund



*New York Movie*, 1939

Oil on canvas

32 1/4 x 40 1/8 in. (81.9 x 101.9 cm)

The Museum of Modern Art, New York; given  
anonymously



Study for *New York Movie*, 1939

Fabricated chalk and charcoal on paper

15 x 11 1/8 in. (38.1 x 28.3 cm)

Whitney Museum of American Art, New York;  
Josephine N. Hopper Bequest 70.455



Study for *New York Movie*, 1939

Fabricated chalk on paper

15 x 11 3/16 in. (38.1 x 28.4 cm)

Whitney Museum of American Art, New York;  
Josephine N. Hopper Bequest 70.273



Study for *New York Movie*, 1939  
Fabricated chalk on paper  
15 1/2 x 7 3/4in. (39.4 x 19.7 cm)  
Whitney Museum of American Art, New York;  
Josephine N. Hopper Bequest 70.447



Study for *Girlie Show*, 1941  
Fabricated chalk and charcoal on paper  
22 1/8 x 15 3/16in. (56.2 x 38.6 cm)  
Whitney Museum of American Art, New York;  
Josephine N. Hopper Bequest 70.997



Study for *Girlie Show*, 1941  
Fabricated chalk on paper  
22 3/16 x 15 1/16 in. (56.4 x 38.3 cm)  
Whitney Museum of American Art, New York;  
Josephine N. Hopper Bequest 70.301



Study for *Nighthawks*, 1941 or 1942  
Fabricated chalk and charcoal on paper  
15 1/16 x 11 1/16 in. (38.3 x 28.1 cm)  
Whitney Museum of American Art, New York;  
Josephine N. Hopper Bequest 70.256



Study for *Morning in a City*, 1944  
Fabricated chalk on paper  
22 1/16 x 15 1/8 in. (56 x 38.4 cm)  
Whitney Museum of American Art, New York;  
Josephine N. Hopper Bequest 70.345



Study for *Morning Sun*, 1952  
 Fabricated chalk on paper  
 11 15/16 x 18 15/16 in. (30.3 x 48.1 cm)  
 Whitney Museum of American Art, New York;  
 Josephine N. Hopper Bequest 70.290

## Wall case: Theater studies



Study for *New York Movie (Strand theatre)*, 1938  
 Fabricated chalk on paper  
 4 1/2 x 7 3/16 in. (11.4 x 18.3 cm)  
 Whitney Museum of American Art, New York;  
 Josephine N. Hopper Bequest 70.87



Study for *New York Movie (Republic theatre)*, 1938  
 Fabricated chalk on paper  
 7 1/4 x 4 7/16 in. (18.4 x 11.3 cm)  
 Whitney Museum of American Art, New York;  
 Josephine N. Hopper Bequest 70.147



Study for *New York Movie (Globe theatre)*, 1938  
 Fabricated chalk on paper  
 7 1/4 x 4 7/16 in. (18.4 x 11.3 cm)  
 Whitney Museum of American Art, New York;  
 Josephine N. Hopper Bequest 70.79



Study for *New York Movie (Republic theatre)*, 1938  
 Fabricated chalk on paper  
 7 1/4 x 4 7/16 in. (18.4 x 11.3 cm)  
 Whitney Museum of American Art, New York;  
 Josephine N. Hopper Bequest 70.150



Study for *New York Movie (Palace theatre)*, 1938  
 Fabricated chalk on paper  
 7 1/8 x 4 7/16 in. (18.1 x 11.3 cm)  
 Whitney Museum of American Art, New York;  
 Josephine N. Hopper Bequest 70.149



Study for *The Sheridan Theatre*, 1937  
 Graphite pencil on paper  
 4 7/16 x 7 1/8 in.  
 Whitney Museum of American Art, New York;  
 Josephine N. Hopper Bequest 70.969



Study for *Girlie Show*, 1941  
 Fabricated chalk on paper  
 7 1/4 x 4 7/16 in. (18.4 x 11.3 cm)  
 Whitney Museum of American Art, New York;  
 Josephine N. Hopper Bequest 70.145



Study for *Girlie Show*, 1941  
 Fabricated chalk on paper  
 4 7/16 x 7 1/4 in. (11.3 x 18.4 cm)  
 Whitney Museum of American Art, New York;  
 Josephine N. Hopper Bequest 70.141



Study for *Girlie Show*, 1941  
 Fabricated chalk on paper  
 4 7/16 x 7 1/4 in. (11.3 x 18.4 cm)  
 Whitney Museum of American Art, New York;  
 Josephine N. Hopper Bequest 70.142





Digital slide show composed of photographs of stage designs, performances, and theater interiors related to productions attended by Edward and Jo Hopper, c. 1901–49

### Vitrine: tickets



Selection of Hopper's ticket stubs, 1925–37  
The Sanborn Hopper Archive at the Whitney Museum of American Art, Frances Mulhall Achilles Library and Archives, New York; gift of the Arthayer R. Sanborn Hopper Collection Trust EJHA.0754–EJHA.0900



Josephine Hopper's untitled black two-ring notebook, c. 1952–61  
The Sanborn Hopper Archive at the Whitney Museum of American Art, Frances Mulhall Achilles Library and Archives, New York; gift of the Arthayer R. Sanborn Hopper Collection Trust EJHA.1580

### THEATER (NEAR DOORWAY)



*Two Comedians*, 1966  
Oil on canvas  
29 x 40 in. (73.7 x 101.6 cm)  
Private collection; courtesy Davidson Gallery, New York

### REALITY AND FANTASY



*Morning in a City*, 1944  
Oil on canvas  
44 5/16 x 59 13/16 in. (112.5 x 152 cm)  
Williams College Museum of Art, Williamstown, MA; bequest of Lawrence H. Bloedel, Class of 1923



*August in the City*, 1945  
 Oil on canvas  
 23 x 30 in. (58.4 x 76.2 cm)  
 Norton Museum of Art, West Palm Beach, Florida;  
 bequest of R. H. Norton



*Morning Sun*, 1952  
 Oil on canvas  
 28 1/8 x 40 1/8 in. (71.4 cm x 101.9 cm)  
 Columbus Museum of Art, OH; museum purchase,  
 Howald Fund



*Office in a Small City*, 1953  
 Oil on canvas  
 28 x 40 in. (71.1 x 101.6 cm)  
 Metropolitan Museum of Art, New York; George A.  
 Hearn Fund, 1953



*City Sunlight*, 1954  
 Oil on canvas  
 28 3/16 x 40 1/8 in. (71.6 x 101.9 cm)  
 Hirshhorn Museum and Sculpture Garden,  
 Smithsonian Institution, Washington DC; gift of the  
 Joseph H. Hirshhorn Foundation, 1966



*Sunlight on Brownstones*, 1956  
 Oil on canvas  
 30 3/8 x 40 1/4 in. (77.2 x 101.9 cm)  
 Wichita Art Museum, KS; Roland P. Murdock  
 Collection



*Sunlight in a Cafeteria*, 1958

Oil on canvas

40 3/16 x 60 1/8 in. (102.1 x 152.7 cm)

Yale University Art Gallery, New Haven, CT; bequest of Stephen Carlton Clark, B.A. 1903



*New York Office*, 1962

Oil on canvas

40 1/2 x 55 1/8 in. (102.9 x 140 cm)

Montgomery Museum of Fine Arts, AL; The Blount Collection



*Intermission*, 1963

Oil on canvas

40 x 60 in. (101.6 cm x 152.4 cm)

San Francisco Museum of Modern Art; purchase in memory of Elaine McKeon, Chair, San Francisco Museum of Modern Art Board of Trustees (1995–2004), with funds provided in part by the Fisher and Schwab Families, and an anonymous donor, by exchange



*Chair Car*, 1965

Oil on canvas

40 x 50 in. (101.6 x 127 cm)

Private collection

## Wall case: Statements on art



Hopper's "Notes on Painting" notebook, 1940s–60s

The Sanborn Hopper Archive at the Whitney Museum of American Art, Frances Mulhall Achilles Library and Archives, New York; gift of the Arthayer R. Sanborn Hopper Collection Trust EJHA.1379



*Reality: A Journal of Artists' Opinions*, vol. 1, no. 1 (Spring 1953)

The Sanborn Hopper Archive at the Whitney Museum of American Art, Frances Mulhall Achilles Library and Archives, New York; gift of the Arthayer R. Sanborn Hopper Collection Trust EJHA.3270, EJHA.3271



Hopper's handwritten statement on art, c. 1950–60

The Sanborn Hopper Archive at the Whitney Museum of American Art, Frances Mulhall Achilles Library and Archives, New York; gift of the Arthayer R. Sanborn Hopper Collection Trust EJHA.0752



Letter from Edward Hopper to Lincoln Kerstein, New York, May 19, 1953

The Sanborn Hopper Archive at the Whitney Museum of American Art, Frances Mulhall Achilles Library and Archives, New York; gift of the Arthayer R. Sanborn Hopper Collection Trust EJHA.2126



Letter from Edward Hopper to Lewis Mumford, New York, May 5, 1954

The Sanborn Hopper Archive at the Whitney Museum of American Art, Frances Mulhall Achilles Library and Archives, New York; gift of the Arthayer R. Sanborn Hopper Collection Trust EJHA.2132

## SKETCHING NEW YORK



Study for *Approaching a City*, 1946

Fabricated chalk and charcoal on paper

15 3/16 x 22 3/16 in. (38.6 x 56.4 cm)

Whitney Museum of American Art, New York;  
Josephine N. Hopper Bequest 70.869



Study for *City Sunlight*, 1954

Fabricated chalk on paper

15 1/4 x 21 15/16 in. (38.7 x 55.7 cm)

Whitney Museum of American Art, New York;  
Josephine N. Hopper Bequest 70.329





Study for *First Row Orchestra*, 1951  
Fabricated chalk and charcoal on paper  
17 1/8 x 20 1/2 in. (43.5 x 52.1 cm)  
Whitney Museum of American Art, New York;  
Josephine N. Hopper Bequest 70.841



Study for *Summertime*, 1943  
Fabricated chalk on paper  
8 13/16 x 11 13/16 in. (22.4 x 30 cm)  
Whitney Museum of American Art, New York;  
Josephine N. Hopper Bequest 70.460



*Three Figures on Steps* (Study for *Sunlight on Brownstones*, 1954)  
Fabricated chalk on paper  
8 1/2 x 11 in. (21.6 x 27.9 cm)  
Collection of Ellie and Edgar Cullman



Study for *New York Office*, 1962  
Fabricated chalk on paper  
8 7/16 x 10 7/8 in. (21.4 x 27.6 cm)  
Whitney Museum of American Art, New York;  
Josephine N. Hopper Bequest 70.822



Study for *The City*, c. 1927  
Charcoal on paper  
7 1/8 x 10 in. (18.1 x 25.4 cm)  
Private collection



*British in New York* from series *The March of Time*, 1937  
35 mm film, black and white, silent, 2:19 min  
National Archives and Records Administration,  
College Park, MD





Study for *Macomb's Dam Bridge*, 1935  
Graphite pencil on paper  
8 13/16 x 11 13/16 in. (22.4 x 30 cm)  
Whitney Museum of American Art, New York;  
Josephine N. Hopper Bequest 70.989



Study for *Macomb's Dam Bridge*, 1935  
Graphite pencil on paper  
8 7/8 x 11 13/16 in. (22.5 x 30 cm)  
Whitney Museum of American Art, New York;  
Josephine N. Hopper Bequest 70.240



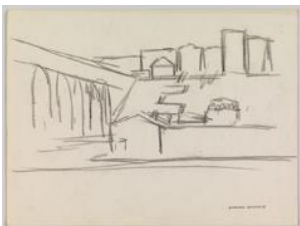
Study for *Macomb's Dam Bridge*, 1935  
Graphite pencil on paper  
9 3/16 x 12 1/16 in. (23.3 x 30.6 cm)  
Whitney Museum of American Art, New York;  
Josephine N. Hopper Bequest 70.242



Study for *Macomb's Dam Bridge*, 1935  
Fabricated chalk and charcoal on paper  
8 7/8 x 23 3/8 in. (22.5 x 59.4 cm)  
Whitney Museum of American Art, New York;  
Josephine N. Hopper Bequest 70.440



*Study of a Landscape with Bridge*, n.d  
Fabricated chalk on paper  
8 7/8 x 11 13/16 in. (22.5 x 30 cm)  
Whitney Museum of American Art, New York;  
Josephine N. Hopper Bequest 70.359



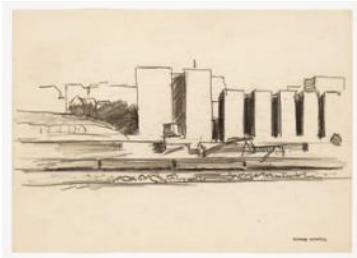
*Study of a River Landscape with Bridge and Buildings*, n.d  
Fabricated chalk on paper  
8 7/8 x 11 7/8 in. (22.5 x 30.2 cm)  
Whitney Museum of American Art, New York 70.356



*Study of a Park with Bridge*, c. 1920  
Fabricated chalk on paper  
8 7/8 x 11 3/16 in. (22.5 x 28.4 cm)  
Whitney Museum of American Art, New York;  
Josephine N. Hopper Bequest 70.643



*On East River*, c. 1930  
Fabricated chalk and charcoal on paper  
10 x 14 in. (25.4 x 35.6 cm)  
Whitney Museum of American Art, New York;  
Josephine N. Hopper Bequest 70.361



*Apartment Houses, Harlem River*, c. 1930  
Fabricated chalk and charcoal on paper  
10 x 14 in. (25.4 x 35.6 cm)  
Whitney Museum of American Art, New York;  
Josephine N. Hopper Bequest 70.838



*Study for Blackwell's Island*, 1928  
Fabricated chalk on paper  
10 x 14 in. (25.4 x 35.6 cm)  
Whitney Museum of American Art, New York;  
Josephine N. Hopper Bequest 70.233



*Study for Blackwell's Island*, 1928  
Fabricated chalk on paper  
10 x 13 15/16 in. (25.4 x 35.4 cm)  
Whitney Museum of American Art, New York;  
Josephine N. Hopper Bequest 70.454



*Study for Blackwell's Island*, 1928  
Fabricated chalk on paper  
10 x 14 in. (25.4 x 35.6 cm)  
Whitney Museum of American Art, New York;  
Josephine N. Hopper Bequest 70.232



Study for *Bridle Path*, 1939  
Fabricated chalk on paper  
8 7/8 x 9 7/16 in. (22.5 x 24 cm)  
Whitney Museum of American Art, New York;  
Josephine N. Hopper Bequest 70.235



Study for *Bridle Path*, 1939  
Fabricated chalk on paper  
8 7/8 x 11 7/8 in. (22.5 x 30.2 cm)  
Whitney Museum of American Art, New York;  
Josephine N. Hopper Bequest 70.216



Study for *Bridle Path*, 1939  
Fabricated chalk on paper  
13 1/4 x 11 15/16 in. (33.7 x 30.3 cm)  
Whitney Museum of American Art, New York;  
Josephine N. Hopper Bequest 70.219



Study for *Bridle Path*, 1939  
Fabricated chalk on paper  
8 7/8 x 11 7/8 in. (22.5 x 30.2 cm)  
Whitney Museum of American Art, New York;  
Josephine N. Hopper Bequest 70.220



Study for *Bridle Path*, 1939  
Fabricated chalk on paper  
8 13/16 x 11 13/16 in. (22.4 x 30 cm)  
Whitney Museum of American Art, New York;  
Josephine N. Hopper Bequest 70.463



*Bridle Path*, 1939  
Oil on canvas  
28 3/8 x 42 1/8 in (72.1 x 107.7 cm)  
Private collection; courtesy Davidson Gallery, New York



Study for *Shakespeare at Dusk*, 1935  
Fabricated chalk, charcoal and graphite pencil on paper  
10 1/2 x 16 in. (26.7 x 40.6 cm)  
Whitney Museum of American Art, New York;  
Josephine N. Hopper Bequest 70.282



Study for *Shakespeare at Dusk*, 1935  
Graphite pencil on paper  
8 13/16 x 23 1/4 in. (22.4 x 59.1 cm)  
Whitney Museum of American Art, New York;  
Josephine N. Hopper Bequest 70.453



Study for *Shakespeare at Dusk*, 1935  
Fabricated chalk on paper  
8 7/8 x 11 13/16 in. (22.5 x 30 cm)  
Whitney Museum of American Art, New York;  
Josephine N. Hopper Bequest 70.281



*Central Park*, n.d  
Fabricated chalk on paper  
8 7/8 x 11 13/16 in. (22.5 x 30 cm)  
Whitney Museum of American Art, New York;  
Josephine N. Hopper Bequest 70.358



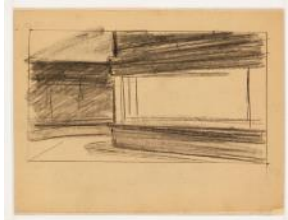
Study for *Williamsburg Bridge*, 1928  
Fabricated chalk on paper  
8 9/16 x 11 1/16 in. (21.7 x 28.1 cm)  
Whitney Museum of American Art, New York;  
Josephine N. Hopper Bequest 70.457



Study for *"Manhattan Bridge Loop"*, c. 1928  
Crayon on paper  
8 1/2 x 11 1/16 in. (21.59 cm x 28.1 cm)  
Addison Gallery of American Art, Phillips Academy,  
Andover, MA; gift of the artist



Study for "*Manhattan Bridge Loop*" No. 2, c. 1928  
Conté crayon on paper  
6 3/8 in. x 11 1/4 in. (16.19 cm x 28.58 cm)  
Addison Gallery of American Art, Phillips Academy,  
Andover, MA; gift of the artist



Study for *Nighthawks*, 1941 or 1942  
Fabricated chalk on paper  
8 1/2 x 11 1/16 in. (21.6 x 28.1 cm)  
Whitney Museum of American Art, New York;  
Josephine N. Hopper Bequest 70.195



Study for *Nighthawks*, 1941 or 1942  
Fabricated chalk on paper  
8 7/16 x 10 15/16 in. (21.4 x 27.8 cm)  
Whitney Museum of American Art, New York;  
Josephine N. Hopper Bequest 70.193



Study for *Nighthawks*, 1941  
Fabricated chalk and charcoal on paper  
Whitney Museum of American Art, New York;  
purchase, Josephine N. Hopper Bequest, by  
exchange 2011.65



*Study of the Upper Stories of 82 Washington Square East*, c. 1928  
Fabricated chalk on paper  
8 7/8 x 11 7/8 in. (22.5 x 30.2 cm)  
Whitney Museum of American Art, New York;  
Josephine N. Hopper Bequest 70.234



*Study of a Building's facade*  
(Study for *Sunlight in a Cafeteria*), c. 1958  
Graphite pencil on paper  
4 x 6 in. (10.1 x 15.2 cm)  
Yale University Art Gallery, New Haven, CT; gift of  
Reverend Arthayer R. Sanborn





*Study of a Chair, Potted Palm, and Cornice (Study for Sunlight in a Cafeteria)*, c. 1958  
 Graphite pencil on paper  
 6 1/16 x 4 in. (15.4 x 10.2 cm)  
 Yale University Art Gallery, New Haven, CT; gift of Reverend Arthayer R. Sanborn



*Study of a Revolving Brass Door (Study for Sunlight in a Cafeteria)*, c. 1958  
 Graphite pencil on paper  
 6 x 4 in. (15.2 x 10.2 cm)  
 Yale University Art Gallery, New Haven, CT; gift of Reverend Arthayer R. Sanborn



*Study of Windows (Study for Sunlight in a Cafeteria)*, c. 1958  
 Graphite pencil on paper  
 6 1/16 x 4 in. (15.4 x 10.2 cm)  
 Yale University Art Gallery, New Haven, CT; gift of Reverend Arthayer R. Sanborn



*Study of a Revolving Door (Study for Sunlight in a Cafeteria)*, c. 1958  
 Graphite pencil on paper  
 6 1/8 x 4 in. (15.5 x 10.2 cm)  
 Yale University Art Gallery, New Haven, CT; gift of Reverend Arthayer R. Sanborn