

Publicity Image Sheet

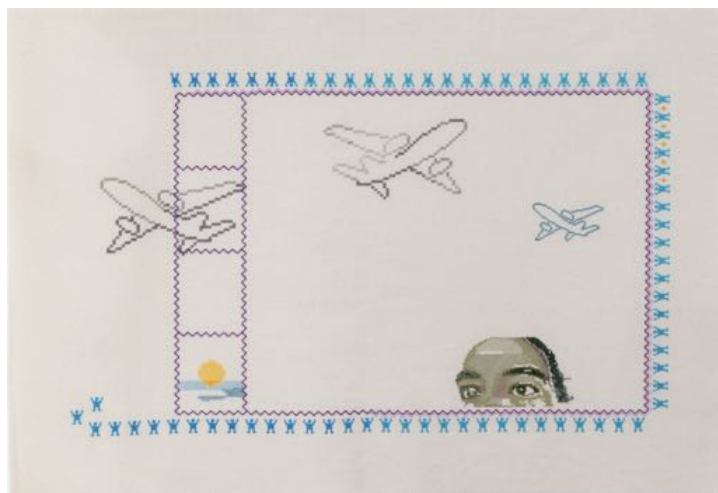
NO EXISTE UN MUNDO POSHURACÁN: PUERTO RICAN ART IN THE WAKE OF HURRICANE MARIA

Whitney Museum of American Art
Nov 23, 2022–Apr 23, 2023

These images are approved only for publication in conjunction with the promotion of *no existe un mundo poshuracán: Puerto Rican Art in the Wake of Hurricane Maria*. Each image may not be cropped, bled off the page, colorized, solarized, overlaid with other matter (e.g., tone, text, another image, etc.), or otherwise altered, except as to overall size. Reproductions must include the full caption information adjacent to the image. Download high resolution image files on the Whitney press site.



Lulu Varona, *Mapa*, 2020. Cotton thread embroidered on Aida cloth, 60 × 50 in. (152.4 × 127 cm). Collection of Yolanda Colón



Lulu Varona, *Ir y venir*, 2021. Cotton thread embroidered on Aida cloth, 25 × 37 in. (63.5 × 94 cm). Collection of Jorge Garcia

Publicity Image Sheet



Javier Orfón, *Elegía de gongolí*, 2021. Acrylic and photographic transfer on canvas, 46 × 58 in. (116.8 × 147.3 cm). Private collection. Photograph by the artist



Frances Gallardo, from the series *Aerosol*, 2021. Color pencil on laser etched paper, 12 × 17 5/16 in. (30.5 × 43.9 cm). Collection of the artist; courtesy the artist

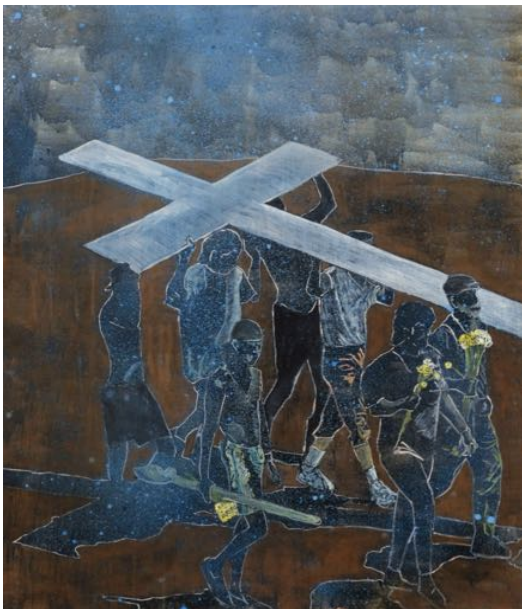


Frances Gallardo, from the series *Aerosol*, 2021. Color pencil on laser etched paper, 12 × 17 5/16 in. (30.5 × 43.9 cm). Collection of the artist; courtesy the artist

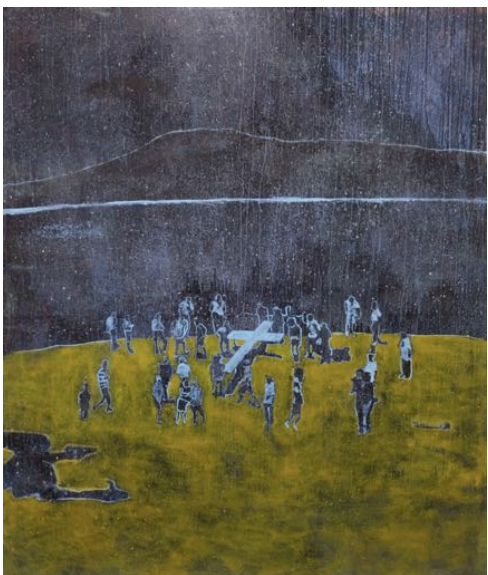
Publicity Image Sheet



Gabriella Torres-Ferrer, *Untitled* (*Valora tu mentira americana*) (detail), 2018. Hurricane ravaged wooden electric post with statehood propaganda, 116 × 118 × 122 in. (294.6 × 299.7 × 309.9 cm). Private collection; courtesy the artist and Embajada, San Juan



Armig Santos, *Yellow Flowers*, 2022. Oil on linen, 84 × 72 in. (213.4 × 182.9 cm). Collection of the artist; courtesy the artist



Armig Santos, *Procesión en Vieques III*, 2022. Acrylic and oil on canvas, 84 × 72 in. (213.4 × 182.9 cm). Collection of the artist; courtesy the artist

Publicity Image Sheet



Sofía Gallisá Muriente, still from *B-Roll*, 2017. Music by Daniel Montes Carro. Video, 6:44 min. Courtesy the artist



Sofía Gallisá Muriente, still from *B-Roll*, 2017. Music by Daniel Montes Carro. Video, 6:44 min. Courtesy the artist

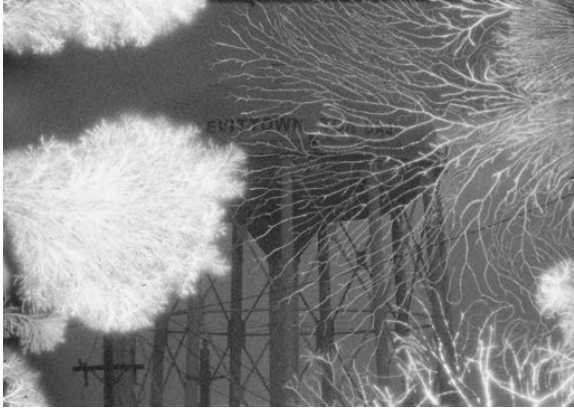


Sofía Gallisá Muriente, still from *B-Roll*, 2017. Music by Daniel Montes Carro. Video, 6:44 min. Courtesy the artist

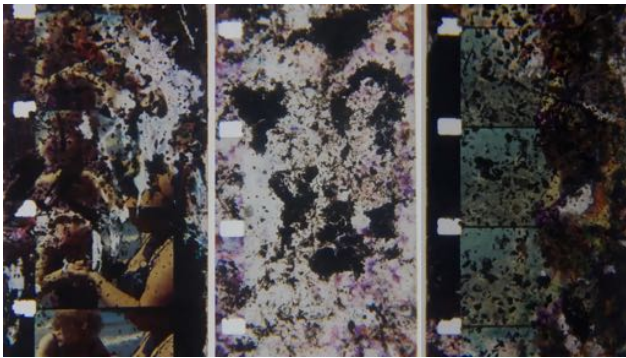


Sofía Gallisá Muriente, still from *Celaje*, 2020. Original score by José Iván Lebrón Moreira. 16mm and Super8 film transferred to HD video, 40:57 min. Courtesy the artist

Publicity Image Sheet



Sofía Gallisá Muriente, still from *Celaje*, 2020. Original score by José Iván Lebrón Moreira. 16mm and Super8 film transferred to HD video, 40:57 min. Courtesy the artist



Sofía Gallisá Muriente, still from *Celaje*, 2020. Original score by José Iván Lebrón Moreira. 16mm and Super8 film transferred to HD video, 40:57 min. Courtesy the artist



Sofía Gallisá Muriente, still from *Celaje*, 2020. Original score by José Iván Lebrón Moreira. 16mm and Super8 film transferred to HD video, 40:57 min. Courtesy the artist



Sofía Gallisá Muriente, still from *Celaje*, 2020. Original score by José Iván Lebrón Moreira. 16mm and Super8 film transferred to HD video, 40:57 min. Courtesy the artist

Publicity Image Sheet

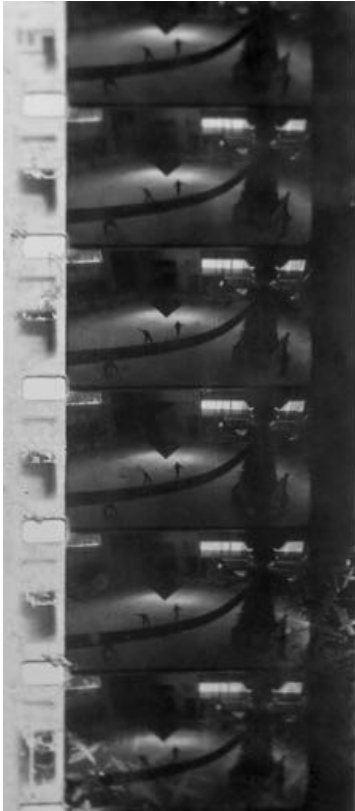


Sofía Gallisá Muriente, still from *Celaje*, 2020. Original score by José Iván Lebrón Moreira. 16mm and Super8 film transferred to HD video, 40:57 min. Courtesy the artist



Sofía Gallisá Muriente, still from *Asimilar y destruir*, 2018. Produced with the support of Kathryn Ramey. 16mm film exposed to salt and rephotographed to video, 2:37 min. Courtesy the artist

Publicity Image Sheet



Sofía Gallisá Muriente, still from *Asimilar y destruir*, 2018. Produced with the support of Kathryn Ramey. 16mm film exposed to salt and rephotographed to video, 2:37 min. Courtesy the artist



Sofía Gallisá Muriente, still from *Asimilar y destruir*, 2018. Produced with the support of Kathryn Ramey. 16mm film exposed to salt and rephotographed to video, 2:37 min. Courtesy the artist

Publicity Image Sheet



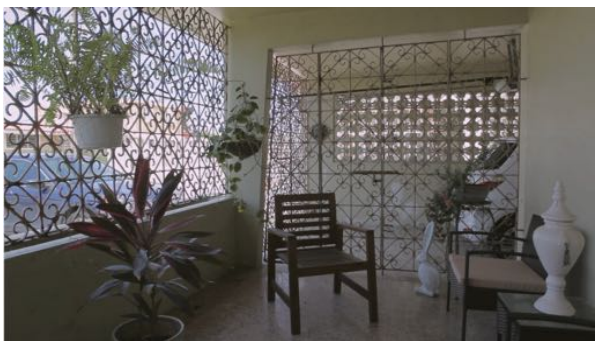
Rogelio Báez Vega, *ID. Escuela Tomás Carrión Maduro, Santurce, Puerto Rico - New on the Market*, 2021. Oil, beeswax, and gold pigment on canvas 60 × 84 in. (152.4 × 213.4 cm). Courtesy the artist



Rogelio Báez Vega, *Paraíso Móvil*, 2019. Oil on canvas, 55 × 70 in. (139.7 × 177.8 cm). Private collection



Sofía Córdova, still from *dawn_chorus ii: el niagara en bicicleta*, 2018. Two channel video, color, sound, on unique unistrut mount, 105 min. Courtesy the artist and Kate Werble Gallery, New York

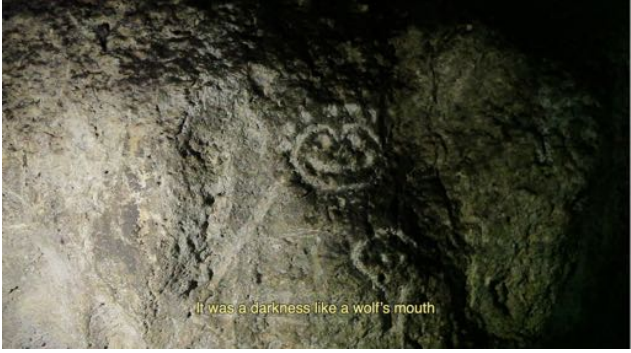





Sofía Córdova, still from *dawn_chorus ii: el niagara en bicicleta*, 2018. Two channel video, color, sound, on unique unistrut mount, 105 min. Courtesy the artist and Kate Werble Gallery, New York

Publicity Image Sheet

 <p>which I don't really get because they also don't want us in the United States either.</p>	<p>Sofía Córdova, still from <i>dawn_chorus ii: el niagara en bicicleta</i>, 2018. Two channel video, color, sound, on unique unistrut mount, 105 min. Courtesy the artist and Kate Werble Gallery, New York</p>
 <p>Walmart, who hired some police officers from some state.</p>	<p>Sofía Córdova, still from <i>dawn_chorus ii: el niagara en bicicleta</i>, 2018. Two channel video, color, sound, on unique unistrut mount, 105 min. Courtesy the artist and Kate Werble Gallery, New York</p>
	<p>Sofía Córdova, still from <i>dawn_chorus ii: el niagara en bicicleta</i>, 2018. Two channel video, color, sound, on unique unistrut mount, 105 min. Courtesy the artist and Kate Werble Gallery, New York</p>
 <p>because when the water falls no one stays dry</p>	<p>Sofía Córdova, still from <i>dawn_chorus ii: el niagara en bicicleta</i>, 2018. Two channel video, color, sound, on unique unistrut mount, 105 min. Courtesy the artist and Kate Werble Gallery, New York</p>

Publicity Image Sheet

 <p>It was a darkness like a wolf's mouth.</p>	<p>Sofía Córdova, still from <i>dawn_chorus ii: el niagara en bicicleta</i>, 2018. Two channel video, color, sound, on unique unistrut mount, 105 min. Courtesy the artist and Kate Werble Gallery, New York</p>
 <p>Things from the apartments above, furniture.</p>	<p>Sofía Córdova, still from <i>dawn_chorus ii: el niagara en bicicleta</i>, 2018. Two channel video, color, sound, on unique unistrut mount, 105 min. Courtesy the artist and Kate Werble Gallery, New York</p>
 <p>Will it change tomorrow? I doubt it.</p>	<p>Sofía Córdova, still from <i>dawn_chorus ii: el niagara en bicicleta</i>, 2018. Two channel video, color, sound, on unique unistrut mount, 105 min. Courtesy the artist and Kate Werble Gallery, New York</p>
 <p>Will it change tomorrow? I doubt it.</p>	<p>Sofía Córdova, still from <i>dawn_chorus ii: el niagara en bicicleta</i>, 2018. Two channel video, color, sound, on unique unistrut mount, 105 min. Courtesy the artist and Kate Werble Gallery, New York</p>

Publicity Image Sheet



Gamaliel Rodríguez, *Figure 1828 LMM*, 2018. Acrylic and ink on paper, 50 × 38 in. (127 × 96.5 cm). Collection of the artist; courtesy Nathalie Karg Gallery, New York



Gamaliel Rodríguez, *Figure 1828 LMM*, 2018. Acrylic and ink on paper, 50 × 38 in. (127 × 96.5 cm). Collection of the artist; courtesy Nathalie Karg Gallery, New York

Publicity Image Sheet



Gamaliel Rodríguez, *Figure 1832 PSE*, 2018. Acrylic and ink on paper, 50 × 38 in. (127 × 96.5 cm). Private collection; courtesy Nathalie Karg Gallery, New York



Javier Orfón, *Bientéveo*, 2018-2022. Inkjet print, 97 × 176 in. (246.4 × 447 cm). Collection of the artist; courtesy Hidrante, San Juan

Publicity Image Sheet



Javier Orfón, *Bientéveo*, 2018-2022. Inkjet print, 97 × 176 in. (246.4 × 447 cm). Collection of the artist; courtesy Hidrante, San Juan



Gamaliel Rodríguez, *Collapsed Soul*, 2020–21. Ink and acrylic on canvas, 84 × 112 in. (213.3 × 284.5 cm). © 2021 Gamaliel Rodríguez. Courtesy the artist and Nathalie Karg Gallery NYC. Photograph by Gamaliel Rodríguez