

EDWARD HOPPER'S NEW YORK

Whitney Museum of American Art

October 19, 2022 - March 5, 2023

These images are approved only for publication in conjunction with the promotion of *Edward Hopper's New York*. Each image may not be cropped, bled off the page, colorized, solarized, overlaid with other matter (e.g., tone, text, another image, etc.), or otherwise altered, except as to overall size. Reproductions must include the full caption information adjacent to the image.

Download high resolution image files on the Whitney press site.



Edward Hopper, *Queensborough Bridge*, 1913. Oil on canvas, 25 7/8 × 38 1/8 in. (65.7 × 96.8 cm). Whitney Museum of American Art, New York; Josephine N. Hopper Bequest 70.1184. © 2022 Heirs of Josephine N. Hopper/Licensed by Artists Rights Society (ARS), New York



Edward Hopper, *New York Interior*, c. 1921. Oil on canvas, 24 5/16 × 29 3/8 in. (61.8 × 74.6 cm). Whitney Museum of American Art, New York; Josephine N. Hopper Bequest 70.1200 © 2022 Heirs of Josephine N. Hopper/Licensed by Artists Rights Society (ARS), New York

Publicity Image Sheet



Edward Hopper, *City Roofs*, 1932. Oil on canvas, 35 11/16 × 28 11/16 in. (90.6 × 72.9 cm). Whitney Museum of American Art, New York; bequest of Carol Franc Buck 2022.98. © 2022 Heirs of Josephine N. Hopper/Licensed by Artists Rights Society (ARS), New York



Edward Hopper, *Early Sunday Morning*, 1930. Oil on canvas, 35 3/16 × 60 1/4 in. (89.4 × 153 cm). Whitney Museum of American Art, New York; purchase, with funds from Gertrude Vanderbilt Whitney 31.426 © 2022 Heirs of Josephine N. Hopper/Licensed by Artists Rights Society (ARS), New York



Edward Hopper, *Manhattan Bridge*, 1925–26. Watercolor and graphite pencil on paper, 13 15/16 × 19 15/16 in. (35.4 × 50.6 cm). Whitney Museum of American Art, New York; Josephine N. Hopper Bequest 70.1098 © 2022 Heirs of Josephine N. Hopper/Licensed by Artists Rights Society (ARS), New York

Publicity Image Sheet



Edward Hopper, *Solitary Figure in a Theater*, 1902–04. Oil on board, 12 1/2 × 9 5/16 in. (31.8 × 23.7 cm). Whitney Museum of American Art, New York; Josephine N. Hopper Bequest 70.1418. © 2022 Heirs of Josephine N. Hopper/Licensed by Artists Rights Society (ARS), New York



Edward Hopper, *Self-Portrait*, 1903–06. Oil on canvas, 25 15/16 × 22 1/8 in. (65.9 × 56.2). Whitney Museum of American Art, New York; Josephine N. Hopper Bequest 70.1253. © 2022 Heirs of Josephine N. Hopper/Licensed by Artists Rights Society (ARS), New York

Publicity Image Sheet

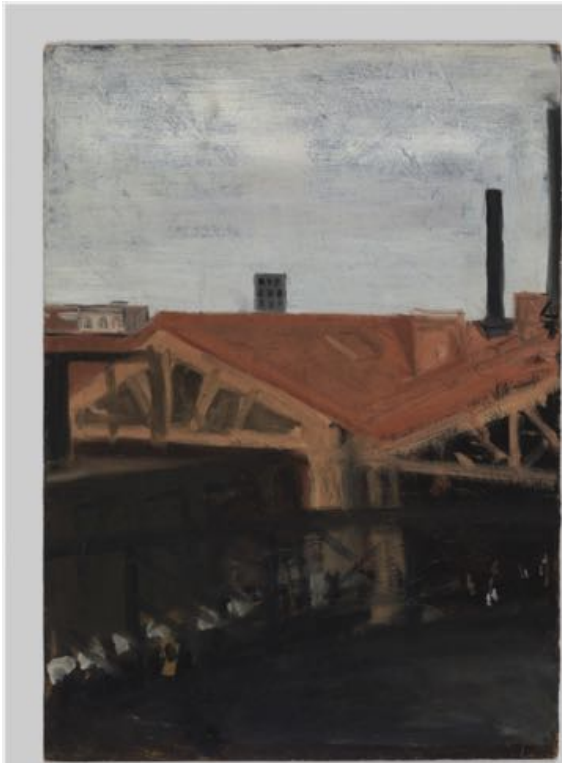


Edward Hopper, *Group of Musicians in an Orchestra Pit*, c. 1904–06. Oil on canvas, 15 1/8 × 12 1/16 in. (38.4 × 30.6 cm). Whitney Museum of American Art, New York; Josephine N. Hopper Bequest 70.1243. © 2022 Heirs of Josephine N. Hopper/Licensed by Artists Rights Society (ARS), New York



Edward Hopper, *Ferry Slip*, C. 1904–06. Oil on cardboard, 12 3/8 × 9 5/16 in. (31.4 × 23.7 cm). Whitney Museum of American Art, New York; Josephine N. Hopper Bequest 70.1426. © 2022 Heirs of Josephine N. Hopper/Licensed by Artists Rights Society (ARS), New York

Publicity Image Sheet



Edward Hopper, *Rooftops of Ferry Slip*, c. 1904–06. Oil on cardboard, 17 × 12 5/16 in. (43.2 × 31.3 cm). Whitney Museum of American Art, New York; Josephine N. Hopper Bequest 70.1398. © 2022 Heirs of Josephine N. Hopper/Licensed by Artists Rights Society (ARS), New York



Edward Hopper, *Le Pont des Arts*, 1907. Oil on canvas, 23 11/16 × 28 13/16 in. (60.2 × 73.2 cm). Whitney Museum of American Art, New York; Josephine N. Hopper Bequest 70.1181. © 2022 Heirs of Josephine N. Hopper/Licensed by Artists Rights Society (ARS), New York

Publicity Image Sheet



Edward Hopper, *The El Station*, 1908. Oil on canvas, 20 1/4 × 29 5/16 in. (51.4 × 74.5 cm). Whitney Museum of American Art, New York; Josephine N. Hopper Bequest 70.1182. © 2022 Heirs of Josephine N. Hopper/Licensed by Artists Rights Society (ARS), New York



Edward Hopper, *Tugboat with Black Smokestack*, 1908. Oil on canvas, 20 3/8 × 29 5/16 in. (51.8 × 74.5 cm). Whitney Museum of American Art, New York; Josephine N. Hopper Bequest 70.1192. © 2022 Heirs of Josephine N. Hopper/Licensed by Artists Rights Society (ARS), New York



Edward Hopper, *Le Bistro or The Wine Shop*, 1909. Oil on canvas, 24 × 28 7/8 in. (61 × 73.3 cm). Whitney Museum of American Art, New York; Josephine N. Hopper Bequest 70.1187. © 2022 Heirs of Josephine N. Hopper/Licensed by Artists Rights Society (ARS), New York

Publicity Image Sheet



Edward Hopper, *Blackwell's Island*, 1911. Oil on canvas, 24 3/8 × 29 5/16 in. (61.9 × 74.5 cm). Whitney Museum of American Art, New York; Josephine N. Hopper Bequest 70.1188. © 2022 Heirs of Josephine N. Hopper/Licensed by Artists Rights Society (ARS), New York



Edward Hopper, *Apartment Houses, East River*, c. 1930. Oil on canvas, 35 1/16 × 60 1/8 in. (89.1 × 152.7 cm). Whitney Museum of American Art, New York; purchase, with funds from Gertrude Vanderbilt Whitney 70.1211 © 2022 Heirs of Josephine N. Hopper/Licensed by Artists Rights Society (ARS), New York



Edward Hopper, *Self-Portrait*, 1925–30. Oil on canvas, 25 3/8 × 20 3/8 in. (64.5 × 51.8 cm). Whitney Museum of American Art, New York; Josephine N. Hopper Bequest 70.1165. © 2022 Heirs of Josephine N. Hopper/Licensed by Artists Rights Society (ARS), New York

Publicity Image Sheet



Edward Hopper, *Jo Painting*, 1936. Oil on canvas, 18 $\frac{3}{16}$ × 16 $\frac{3}{16}$ in. (46.2 × 41.1 cm). Whitney Museum of American Art, New York; Josephine N. Hopper Bequest 70.1171. © 2022 Heirs of Josephine N. Hopper/Licensed by Artists Rights Society (ARS), New York



Edward Hopper, *Rooftops*, 1926. Watercolor and graphite pencil on paper, 12 $\frac{7}{8}$ × 19 $\frac{7}{8}$ in. (32.7 × 50.5 cm). Whitney Museum of American Art, New York; Josephine N. Hopper Bequest 70.1114. © 2022 Heirs of Josephine N. Hopper/Licensed by Artists Rights Society (ARS), New York

Publicity Image Sheet



Edward Hopper, *Night Shadows*, 1921. Etching, 12 × 15 15/16 in. (30.5 × 40.5 cm). Whitney Museum of American Art, New York; Josephine N. Hopper Bequest 70.1047. © 2022 Heirs of Josephine N. Hopper/Licensed by Artists Rights Society (ARS), New York



Edward Hopper, *Moving Train*, c. 1900. Pen and ink on paper, 4 × 4 15/16 in. (10.2 × 12.5 cm). Whitney Museum of American Art, New York; Josephine N. Hopper Bequest 70.1561.94. © 2022 Heirs of Josephine N. Hopper/Licensed by Artists Rights Society (ARS), New York



Edward Hopper, *Study for Macomb's Dam Bridge*, 1935. Graphite pencil on paper, 9 3/16 × 18 5/16 in. (23.3 × 46.5 cm). Whitney Museum of American Art, New York; Josephine N. Hopper Bequest 70.990. © 2022 Heirs of Josephine N. Hopper/Licensed by Artists Rights Society (ARS), New York

Publicity Image Sheet



Edward Hopper, Study for *Blackwell's Island*, 1928. Fabricated chalk on paper, 10 × 14 in. (25.4 × 35.6 cm). Whitney Museum of American Art, New York; Josephine N. Hopper Bequest 70.233. © 2022 Heirs of Josephine N. Hopper/Licensed by Artists Rights Society (ARS), New York



Edward Hopper, *New York and Its Houses*, c. 1906–10. Watercolor, ink, and graphite pencil on paper, 21 13/16 × 14 13/16 in. (55.4 × 37.6 cm). Whitney Museum of American Art, New York; Josephine N. Hopper Bequest 70.1347. © 2022 Heirs of Josephine N. Hopper/Licensed by Artists Rights Society (ARS), New York

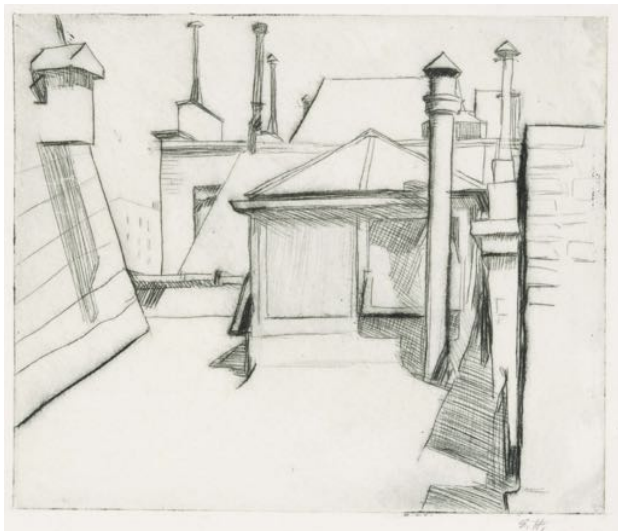


Edward Hopper, *A Theater Entrance*, 1906–10. Watercolor, ink, and graphite pencil on paper, 19 11/16 × 14 3/4 in. (50 × 37.5 cm). Whitney Museum of American Art, New York; Josephine N. Hopper Bequest 70.1378. © 2022 Heirs of Josephine N. Hopper/Licensed by Artists Rights Society (ARS), New York

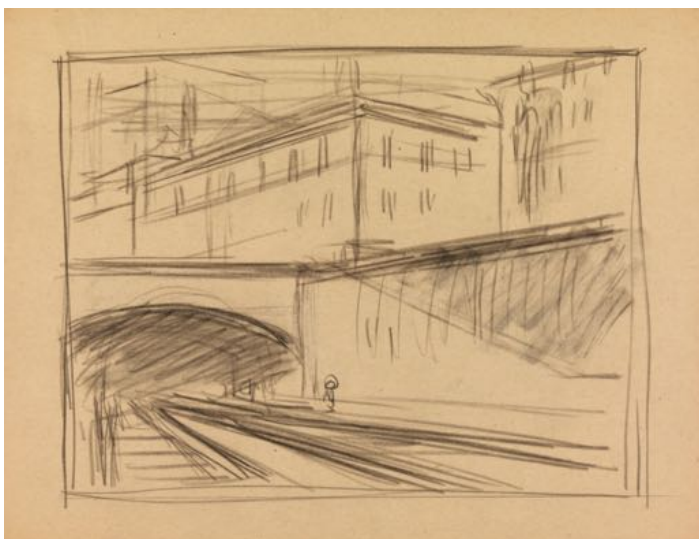
Publicity Image Sheet



Edward Hopper, *The Lonely House*, 1922. Etching, 13 3/8 × 16 11/16 in. (34 × 42.4 cm). Whitney Museum of American Art, New York; Josephine N. Hopper Bequest 70.1040. © 2022 Heirs of Josephine N. Hopper/Licensed by Artists Rights Society (ARS), New York



Edward Hopper, *On My Roof*, 1915–18. Drypoint, 8 5/16 × 9 1/4 in. (21.1 × 23.5 cm). Whitney Museum of American Art, New York; Josephine N. Hopper Bequest 70.1066. © 2022 Heirs of Josephine N. Hopper/Licensed by Artists Rights Society (ARS), New York



Edward Hopper, *Study for Approaching a City*, 1946. Fabricated chalk on paper, 8 1/2 × 11 in. (21.6 × 27.9 cm). Whitney Museum of American Art, New York; Josephine N. Hopper Bequest 70.184. © 2022 Heirs of Josephine N. Hopper/Licensed by Artists Rights Society (ARS), New York

Publicity Image Sheet



Edward Hopper, Study for *Williamsburg Bridge*, 1928. Fabricated chalk on paper, 8 9/16 x 11 1/16 in. (21.7 x 28.1 cm). Whitney Museum of American Art, New York; Josephine N. Hopper Bequest 70.457. © 2022 Heirs of Josephine N. Hopper/Licensed by Artists Rights Society (ARS), New York



Josephine Nivison Hopper, Back of E. Hopper, c. 1930. Watercolor and graphite pencil on paper, 19 3/4 x 13 7/8 in. (50.2 x 35.2 cm). Whitney Museum of American Art, New York; Josephine N. Hopper Bequest 2001.0728a-b. © 2022 Heirs of Josephine N. Hopper/Licensed by Artists Rights Society (ARS), New York

Publicity Image Sheet



Josephine Nivison Hopper, *Stove and Fireplace, Three Washington Square North*, n.d. Watercolor and graphite on paper, 20 1/6 × 14 in. (50.9 × 35.6 cm). Edward Hopper House Museum & Study Center, Nyack, New York; The Sanborn Josephine Nivison Hopper Collection. © 2022 Heirs of Josephine N. Hopper/Licensed by Artists Rights Society (ARS), New York



Edward Hopper, *August in the City*, 1945. Oil on canvas, 23 × 30 in. (58.4 × 76.2 cm). Norton Museum of Art, West Palm Beach, Florida; Bequest of R. H. Norton 53.84. © 2022 Heirs of Josephine N. Hopper/Licensed by Artists Rights Society (ARS), New York



Edward Hopper, *The Sheridan Theatre*, 1937. Oil on canvas, 17 × 25 in. (43.5 × 64.1 cm). Newark Museum of Art, NJ; Felix Fuld Bequest Fund. © 2022 Heirs of Josephine N. Hopper/Licensed by Artists Rights Society (ARS), New York. Image courtesy Art Resource

Publicity Image Sheet



Edward Hopper, *Sunlight on Brownstones*, 1956. Oil on canvas, 30 3/8 × 40 1/4 in. (71.1 × 101.6 cm). Wichita Art Museum, KS, Roland P. Murdock Collection. © 2022 Heirs of Josephine N. Hopper/Licensed by Artists Rights Society (ARS), New York



Edward Hopper, *Office in a Small City*, 1953. Oil on canvas, 28 × 40 in. (71.1 × 101.6 cm). Metropolitan Museum of Art; George A. Hearn Fund. © 2022 Heirs of Josephine N. Hopper/Licensed by Artists Rights Society (ARS), New York. Image courtesy Art Resource



Edward Hopper, *New York Movie*, 1939. Oil on canvas, 32 1/4 × 40 1/8 in. (81.9 × 101.9 cm). The Museum of Modern Art; given anonymously. © 2022 Heirs of Josephine N. Hopper/Licensed by Artists Rights Society (ARS), New York. Image courtesy Art Resource

Publicity Image Sheet



Edward Hopper, *House at Dusk*, 1935. Oil on canvas, 36 1/4 × 50 in. (92.1 × 127 cm). Virginia Museum of Fine Arts, Richmond; John Barton Payne Fund. © 2022 Heirs of Josephine N. Hopper/Licensed by Artists Rights Society (ARS), New York; Virginia Museum of Fine Arts. Photograph by Katherine Wetzel



Edward Hopper, *Morning Sun*, 1952. Oil on canvas, 28 1/8 × 40 1/8 in. (71.4 × 101.9 cm). Columbus Museum of Art, Ohio: Museum Purchase, Howald Fund. © 2022 Heirs of Josephine N. Hopper/Licensed by Artists Rights Society (ARS), New York



Edward Hopper, *Blackwell's Island*, 1928. Oil on canvas, 34 1/2 × 59 1/2 in. (87.6 × 151.1 cm). Crystal Bridges Museum of Art, Bentonville, AR. © 2022 Heirs of Josephine N. Hopper/Licensed by Artists Rights Society (ARS), New York. Image courtesy Art Resource, NY. Photography by Edward C. Robison III

Publicity Image Sheet



Edward Hopper, *Sunlight in a Cafeteria*, 1958. Oil on canvas, 40 $\frac{3}{16}$ × 60 $\frac{1}{8}$ in. (102.1 × 152.7 cm). Yale University Art Gallery, New Haven; bequest of Stephen Carlton Clark, B.A. 1903. © 2022 Heirs of Josephine N. Hopper/Licensed by Artists Rights Society (ARS), New York



Edward Hopper, *My Roof*, 1928. Watercolor on paper, 14 × 20 in. (35.6 × 50.8 cm). Collection of the Thyssen-Bornemisza Family. © 2022 Heirs of Josephine N. Hopper/Licensed by Artists Rights Society (ARS), New York



Edward Hopper, *Room in New York*, 1932. Oil on canvas, 29 × 36 in. (73.7 × 91.4 cm). Sheldon Museum of Art, University of Nebraska—Lincoln; Anna R. and Frank M. Hall Charitable Trust. © 2022 Heirs of Josephine N. Hopper/Licensed by Artists Rights Society (ARS), New York

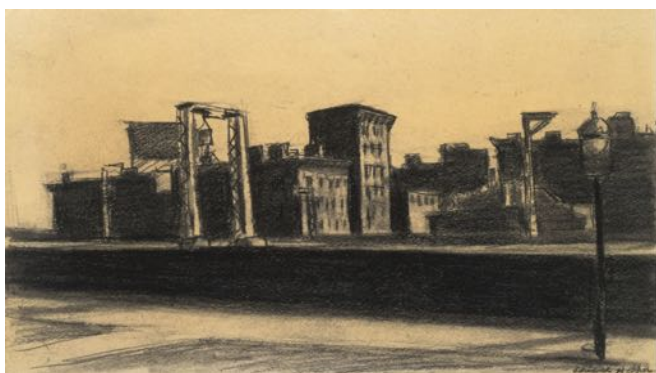
Publicity Image Sheet



Edward Hopper, *Skyline near Washington Square*, 1925. Watercolor and graphite on paper, 15 1/16 × 21 9/16 in. (38.3 × 54.8 cm). Munson–Williams–Proctor Arts Institute, Utica, New York. © 2022 Heirs of Josephine N. Hopper/Licensed by Artists Rights Society (ARS), New York. Image courtesy Art Resource, New York



Edward Hopper, *Study for Manhattan Bridge Loop*, c. 1928. Black crayon on wove paper, 8 1/2 × 11 1/16 in. (21.59 × 28.1 cm). Addison Gallery of American Art, Phillips Academy, Andover, MA. © 2022 Heirs of Josephine N. Hopper/Licensed by Artists Rights Society (ARS), New York. Image courtesy Art Resource, New York



Edward Hopper, *Study for Manhattan Bridge Loop No. 2*, c. 1928. Conte crayon on paper, 6 3/8 × 11 1/4 in. (16.2 × 28.5 cm). Addison Gallery of American Art, Phillips Academy, Andover, MA. © 2022 Heirs of Josephine N. Hopper/Licensed by Artists Rights Society (ARS), New York. Image courtesy Art Resource, New York

Publicity Image Sheet



Edward Hopper, *Manhattan Bridge Loop*, 1928. Oil on canvas, 35 × 60 in. (88.9 × 152.4 cm). Addison Gallery of American Art, Phillips Academy, Andover, MA. © 2022 Heirs of Josephine N. Hopper/Licensed by Artists Rights Society (ARS), New York. Image courtesy Art Resource, NY



Edward Hopper, *From Williamsburg Bridge*, 1928. Oil on canvas, 29 3/8 × 43 3/4 in. (74.6 × 111.1 cm). Metropolitan Museum of Art, New York; George A. Hearn Fund, 1937. © 2022 Heirs of Josephine N. Hopper/Licensed by Artists Rights Society (ARS), New York. Image courtesy Art Resource, New York



Edward Hopper, *Tables for Ladies*, 1930. Oil on canvas, 48 1/4 × 60 1/4 in. (122.6 × 153 cm). The Metropolitan Museum of Art; George A. Hearn Fund. © 2022 Heirs of Josephine N. Hopper/Licensed by Artists Rights Society (ARS), New York. Image courtesy Art Resource, New York

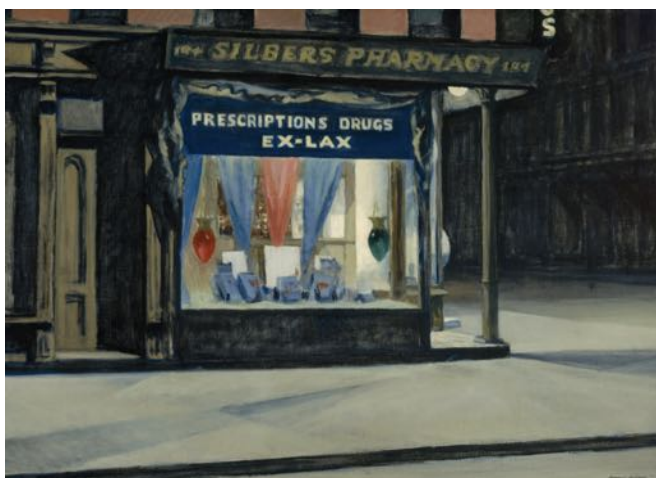
Publicity Image Sheet



Edward Hopper, *City Sunlight*, 1954. Oil on canvas, 28 $\frac{3}{16}$ × 40 $\frac{1}{8}$ in. (71.6 × 101.9 cm). Hirshhorn Museum and Sculpture Garden, Washington, D.C.; gift of the Joseph H. Hirshhorn Foundation, 1966. © 2022 Heirs of Josephine N. Hopper/Licensed by Artists Rights Society (ARS), New York



Edward Hopper, *Room in Brooklyn*, 1932. Oil on canvas, 29 $\frac{1}{8}$ × 34 in. (74 × 86.4 cm). Museum of Fine Arts, Boston; The Hayden Collection—Charles Henry Hayden Fund. © 2022 Heirs of Josephine N. Hopper/Licensed by Artists Rights Society (ARS), New York. Photograph by Museum of Fine Arts, Boston



Edward Hopper, *Drug Store*, 1927. Oil on canvas, 29 × 40 $\frac{1}{8}$ in. (73.7 × 101.9 cm). Museum of Fine Arts, Boston; bequest of John T. Spaulding. © 2022 Heirs of Josephine N. Hopper/Licensed by Artists Rights Society (ARS), New York. Photograph © Museum of Fine Arts, Boston

Publicity Image Sheet



Edward Hopper, *Automat*, 1927. Oil on canvas, 28 1/8 x 35 in. (71.4 x 88.9 cm). Des Moines Art Center, Des Moines, Iowa; purchased with funds from the Edmundson Art Foundation, Inc. © 2022 Heirs of Josephine N. Hopper/Licensed by Artists Rights Society (ARS), New York. Photograph by Rich Sanders, Des Moines, Iowa



Edward Hopper, *New York Restaurant*, c. 1922. Oil on canvas, 24 x 30 in. (61 x 76.2 cm). Muskegon Museum of Art, MI; Hackley Picture Fund. © 2022 Heirs of Josephine N. Hopper/Licensed by Artists Rights Society (ARS), New York

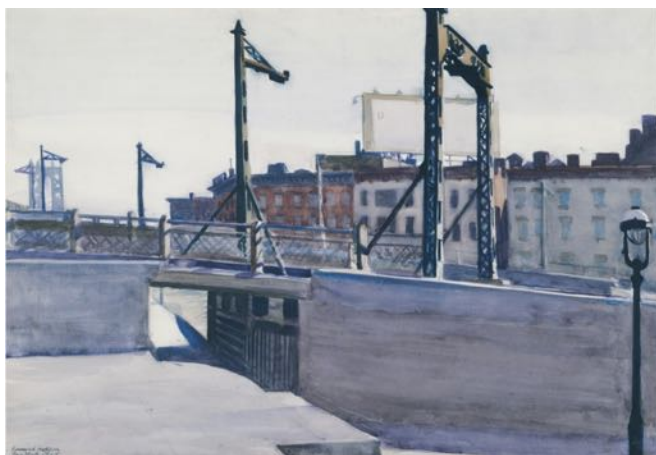


Edward Hopper, *Roofs, Washington Square*, 1926. Watercolor over charcoal on paper, 13 7/8 x 19 7/8 in. (35.24 x 50.48 cm). Carnegie Museum of Art, Pittsburgh; Bequest of Mr. and Mrs. James H. Beal. © 2022 Heirs of Josephine N. Hopper/Licensed by Artists Rights Society (ARS), New York

Publicity Image Sheet



Edward Hopper, *Office at Night*, 1940. Oil on canvas, 22 3/16 × 25 1/8 in. (56.4 × 63.8 cm). Walker Art Center, Minneapolis, MN; gift of the T.B. Walker Foundation, Gilbert M. Walker Fund, 1948. © 2022 Heirs of Josephine N. Hopper/Licensed by Artists Rights Society (ARS), New York



Edward Hopper, *Manhattan Bridge*, 1925. Watercolor over graphite on paper, 13 7/8 × 19 15/16 in. (35.3 × 50.6 cm). Harvard Art Museums, Fogg Museum, Cambridge, MA, Louise E. Bettens Fund. © 2022 Heirs of Josephine N. Hopper/Licensed by Artists Rights Society (ARS), New York



Edward Hopper, *New York Corner (Corner Saloon)*, 1913. Oil on canvas, 24 × 29 in. (61 × 73.6 cm). Iris & B. Gerald Cantor Center for Visual Arts at Stanford University; museum purchase made possible by the Halperin Art Acquisition Fund, an anonymous estate, Roberta & Steve Denning, Susan & John Diekman, Jill & John Freidenrich, Deedee & Burton McMurtry, Cantor Membership Acquisitions Fund, an anonymous acquisitions fund, Pauline Brown Acquisitions Fund, C. Diane Christensen, an anonymous donor, Modern & Contemporary Art Acquisitions Fund, and Kazak Acquisitions Fund, 2015.6

Publicity Image Sheet



Edward Hopper, *The City*, 1927. Oil on canvas, 27 1/2 x 37 in. (71.1 x 91.4 cm). University of Arizona Museum of Art, Tucson; gift of C. Leonard Pfeiffer © 2022 Heirs of Josephine N. Hopper/Licensed by Artists Rights Society (ARS), New York



Edward Hopper, *Approaching a City*, 1946. Oil on canvas, 27 1/8 x 36 in. (68.9 x 91.4 cm). The Phillips Collection, Washington, D.C.; acquired 1947 © 2022 Heirs of Josephine N. Hopper/Licensed by Artists Rights Society (ARS), New York