

# SOCIAL NARRATIVE FOR QUIETER HOURS FOR NEURODIVERGENT VISITORS

Today we're going to the Quieter Hours for Neurodivergent Visitors to see *Whitney Biennial 2022: Quiet As It's Kept*. In order to make this event accessible, some artworks have been turned off or their volume turned down. If you attend the Museum during regular hours and would like to request accommodations, please ask the front desk or email [accessfeedback@whitney.org](mailto:accessfeedback@whitney.org).

Sunday, July 10 : Floors 1, 3, and 5

Sunday, August 28 : Floors 1, 3, and 6



Whitney Museum of American Art. Photograph by Nic Lehoux

Today we're going to the Whitney Museum of American Art. Before we visit, we will make sure:

### **1. We feel well**

If we have a fever or any flu-like symptoms, we will stay home.  
Turn to page 14 to learn how to visit the Whitney from home.

### **2. We have masks**

This event requires all attendees to wear masks. If we do not have a mask when we arrive to the Museum, a Whitney staff person will provide one.

### **3. We've booked our tickets for Quieter Hours online**

The Whitney encourages visitors to book tickets online in advance of arrival.



Photograph by Filip Wolak

#### **4. We're leaving large items at home**

For the safety of the artworks, backpacks and other large items are not permitted in the galleries.



Whitney Museum of American Art. Photograph by Ryan Lowry

When we arrive at the Museum, we will follow the signs to know where to enter the building.

Guards in suits and Visitors Services staff in bright t-shirts will be available to offer assistance.

We can ask someone at the Visitors Services Desk if we need to borrow a wheelchair, a large print version of the wall labels, or ear defenders.


# GUIDE

Listen to interviews with artists, curators, and other thinkers about works on view.

8   



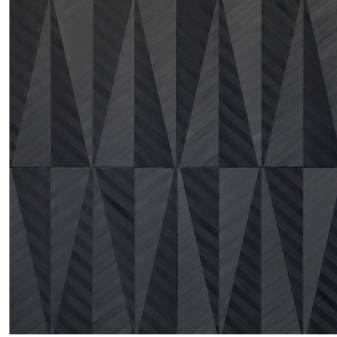
**AT THE DAWN OF A NEW  
AGE: EARLY TWENTIETH-  
CENTURY AMERICAN  
MODERNISM**

 Audio guide, Access

7  

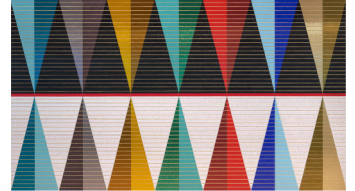


6




**WHITNEY BIENNIAL  
2022: QUIET AS IT'S  
KEPT  
FLOOR 6**

5  



**WHITNEY BIENNIAL  
2022: QUIET AS IT'S  
KEPT  
FLOOR 5**

 Audio guide, Access

Service animals are welcome at the Whitney.

If you have a question about an artwork, check out the Mobile Guide with information about the works on view in the Museum. A QR code will be available throughout the Museum and you can also access the Guide online at [whitney.org/guide](https://whitney.org/guide).



Installation view of Whitney Biennial 2022: *Quiet as It's Kept* (Whitney Museum of American Art, New York, April 6–September 5, 2022). Henee Green, *Space Poem #7* (*Color Without Objects: Intra-Active May-Words*), 2020. Photograph by Ron Amstutz

Now it's time to go see art.

We can start with the first floor in the lobby.

Some art is hanging from the ceiling.  
Some art is on the walls of the Museum.  
Some art is outside of the Museum too.

There is a video artwork in the gallery to the left of the Whitney Cafe.  
We can sit or stand and watch some or all of the video.



Photograph by Filip Wolak

To move around the building, we will take the stairs or the elevator.  
In the galleries we will:

- Maintain a six feet of distance from other visitors outside of our party
- Not touch the artwork
- Not bring any food or drink
- Speak quietly and listen to all staff and guards

If we need a quiet space at any time we can go to the Hearst Artspace on Floor 3.



Installation view of *Whitney Biennial 2022: Quiet as It's Kept* (Whitney Museum of American Art, New York, April 6–September 5, 2022). Installation by Cassandra Press, 2022. Photograph by Sandenwolf

We can stop on Floor 3 to see art and read books by Cassandra Press.

These books were created and framed through a Black femme perspective and discuss topics like racism and sexism.

When we are done reading, we can put the books back where we found them.



Photograph by Ryan Lowry

We can stop on Floor 5 on July 10 and Floor 6 on August 28 to see some art.

A Whitney educator will lead a tour through the gallery. We can join the tour or wander on our own.

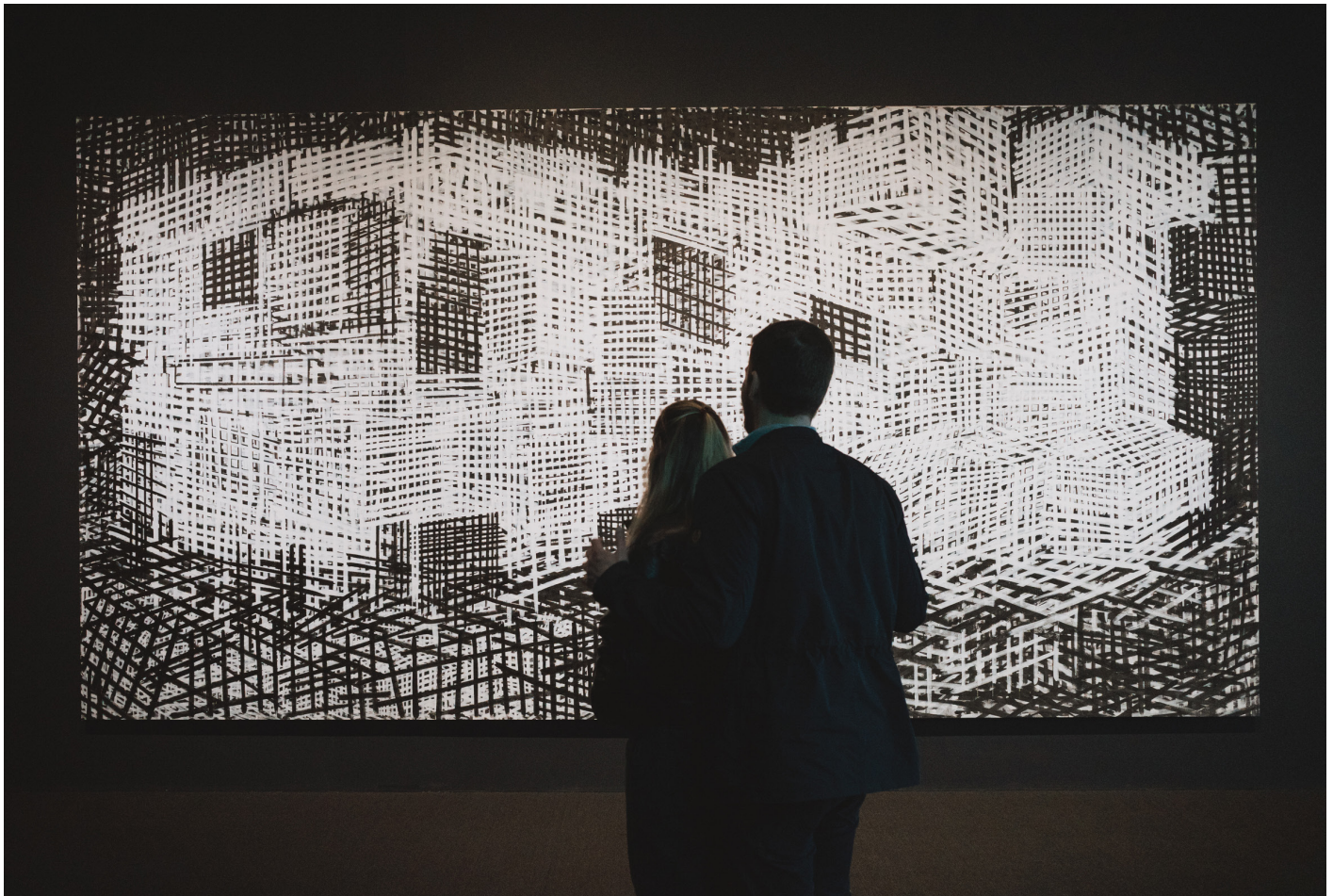


Installation view of *Whitney Biennial 2022: Quiet as It's Kept* (Whitney Museum of American Art, New York, April 6–September 5, 2022).  
Charles Ray, *Jeff*, 2021. Photograph by Ryan Lowry

Floor 5 has bright lighting from the big open windows. Artworks deal with topics like prisons, colonialism, family stories, zombies, displacement, and what it means to be American.

On Floor 5, we can walk towards whatever artwork seems interesting to us.

If we go to the left, down a hallway we can find an outdoor terrace with more artworks.



Installation view of *Whitney Biennial 2022: Quiet as It's Kept* (Whitney Museum of American Art, New York, April 6–September 5, 2022), Denyse Thomasos, *Jail*, 1993. Photograph by Ryan Lowry

Floor 6 has dark lighting. Artworks deal with topics like racism, homelessness, gun violence, HIV histories, protest, and what it means to be human.

On Floor 6, we can walk towards whatever artwork seems interesting to us.

Through the first hallway and then all the way down the right to the southeast corner, there is an artwork with a charcoal tile floor and very bright lights.

Through the first hallway and to the left are video artworks that we can sit or stand to watch.

All the way to the left, on the west end of the floor, there is an outdoor terrace with more artworks.



Photograph by Ryan Lowry

Bathrooms are available on Floors -1, 3, 5, 7, and 8 of the Museum. All-gender and accessible bathrooms are available on Floor 3.



Whitney Museum of American Art. Photograph by Ryan Lowry

At 10 am, Quieter Hours will end and Museum staff will ask us to leave. When we are done with our visit, we will exit the building the same way we entered.

At 10:30 am, the Museum will open for Member Hours and the exhibition will turn on all sound and video artworks.



**BEFORE HE WAS PRESIDENT, EISENHOWER WAS A GENERAL. WHAT WAR WAS HE IN?**

# ACCESS PROGRAMS

[Touch tours](#) [Whitney Signs](#) [ASL vlogs](#)

The Whitney invites disabled and non-disabled visitors to experience the richness and complexity of American art in an inclusive, welcoming environment.

## SEE ALSO: ACCESS SERVICES

Prepare for your visit by learning about access services offered at the Whitney

LEARN MORE

Even after we leave the Whitney, we can stay connected to the Museum from home!

Please check out our online programs [whitney.org/education/public-programs](https://whitney.org/education/public-programs).

**Whitney Museum  
of American Art**  
99 Gansevoort Street  
New York, NY 10014