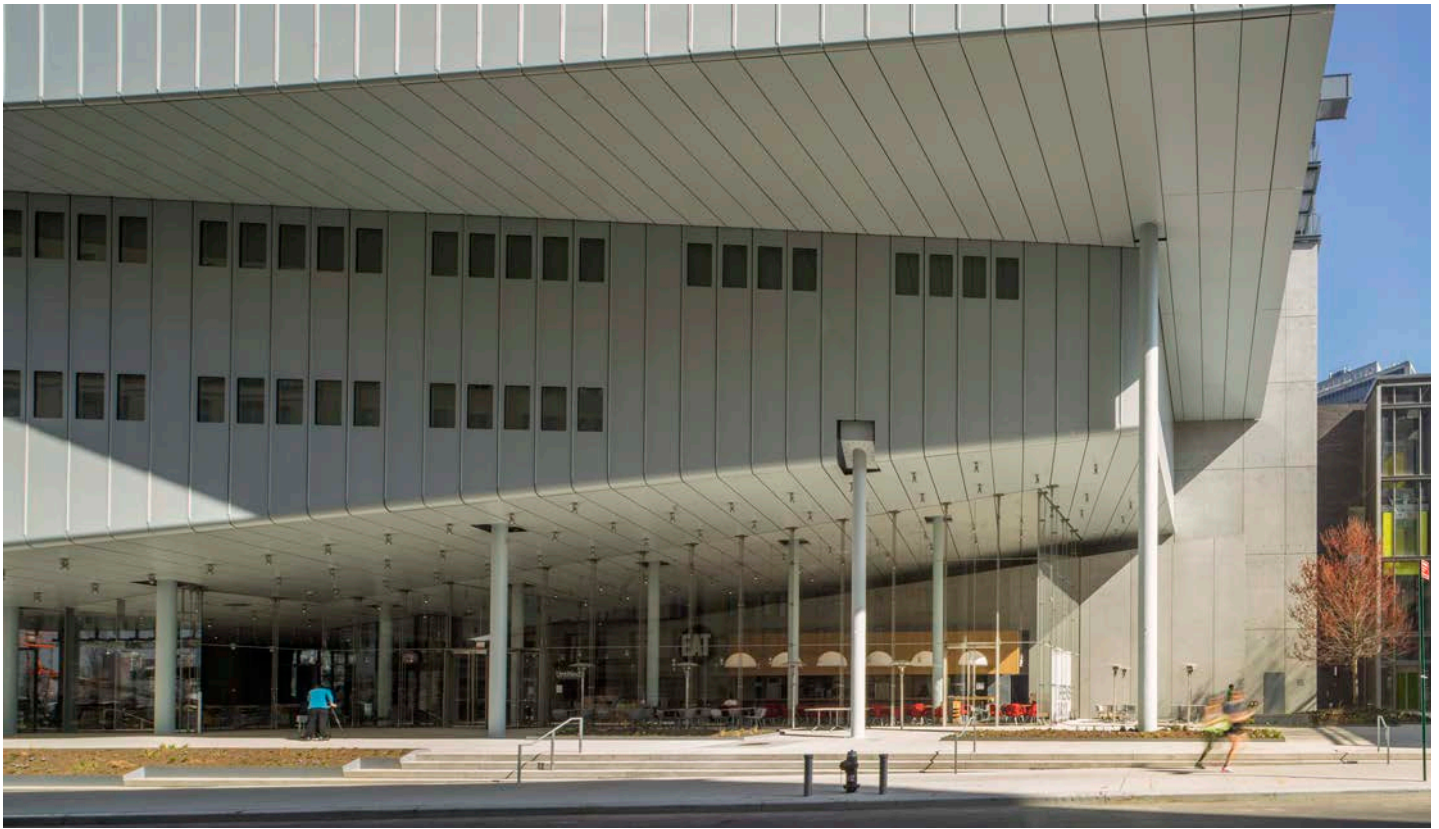


WHITNEY

**VISITING
THE MUSEUM**



Whitney Museum of American Art. Photograph by Nic Lehoux

Today we're going to the Whitney Museum of American Art. Before we visit, we will make sure:

1. We feel well

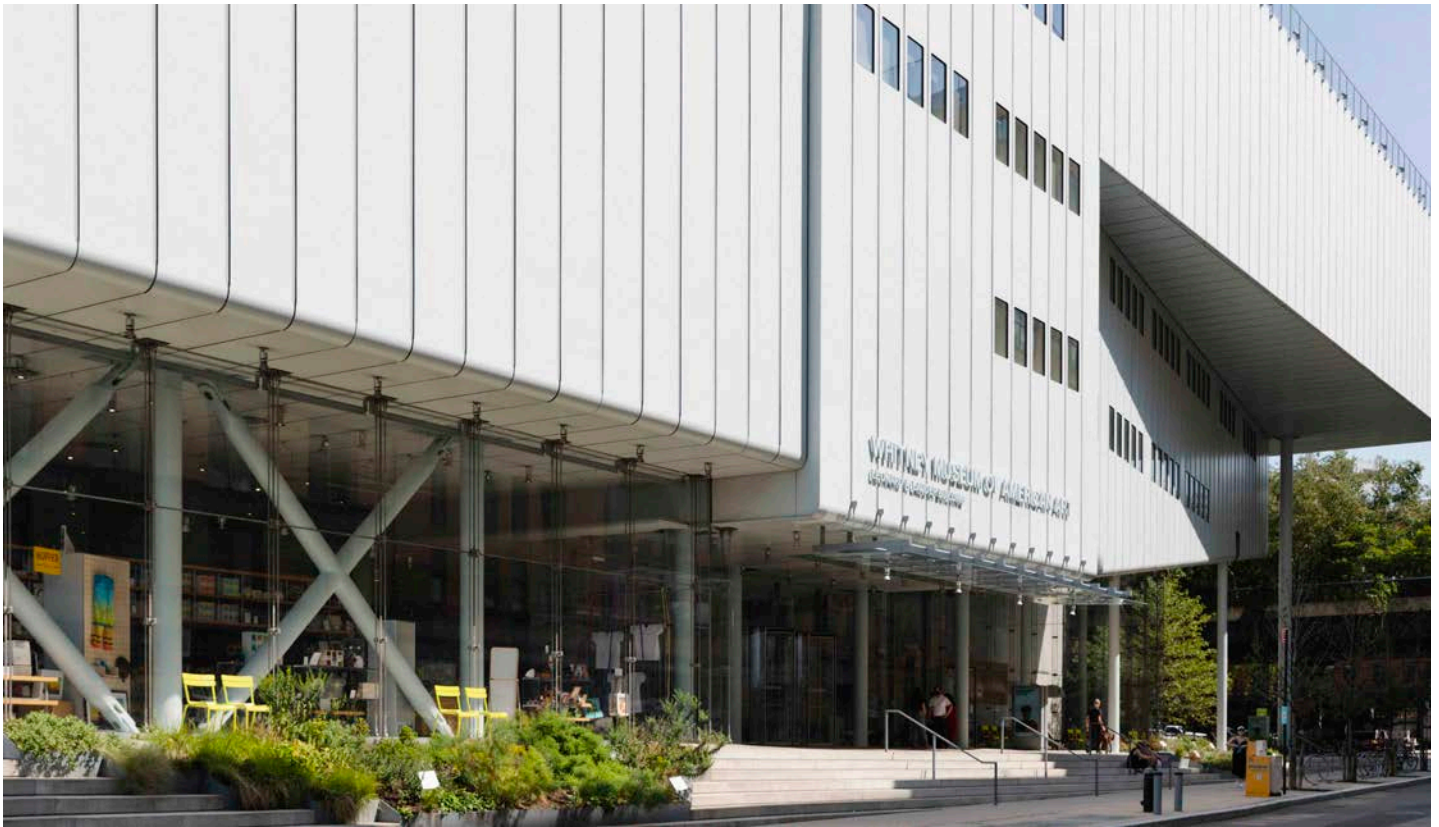
– If I have a fever or any flu-like symptoms, I will stay home. Turn to Page 14 to learn how to visit the Whitney from home.

2. We have face coverings

– The Whitney requires all visitors to wear face coverings. Visitors not wearing face coverings will not be permitted to enter the Museum.

3. We've booked our tickets online

– The Whitney encourages visitors to book timed tickets online in advance of arrival.



Whitney Museum of American Art. Photograph by Ryan Lowry

4. We're leaving large items at home

- The Whitney coat check is currently closed, so I will leave any large items at home. For the safety of the artworks, backpacks are not permitted in the galleries.

5. We've double-checked the time of our tickets

- The Whitney only has timed tickets available. Please double-check the timing on your ticket and be sure to arrive at the Museum 10–15 minutes prior.



Whitney Museum of American Art. Photograph by Ryan Lowry

When we arrive at the Museum, we will wait outside the building and line up six feet apart from others. Markers on the ground will indicate where to wait.



Whitney Museum of American Art. Photograph by Ryan Lowry

When we enter the Museum, we may notice new precautions being taken to ensure our safety. These include:

Temperature checks

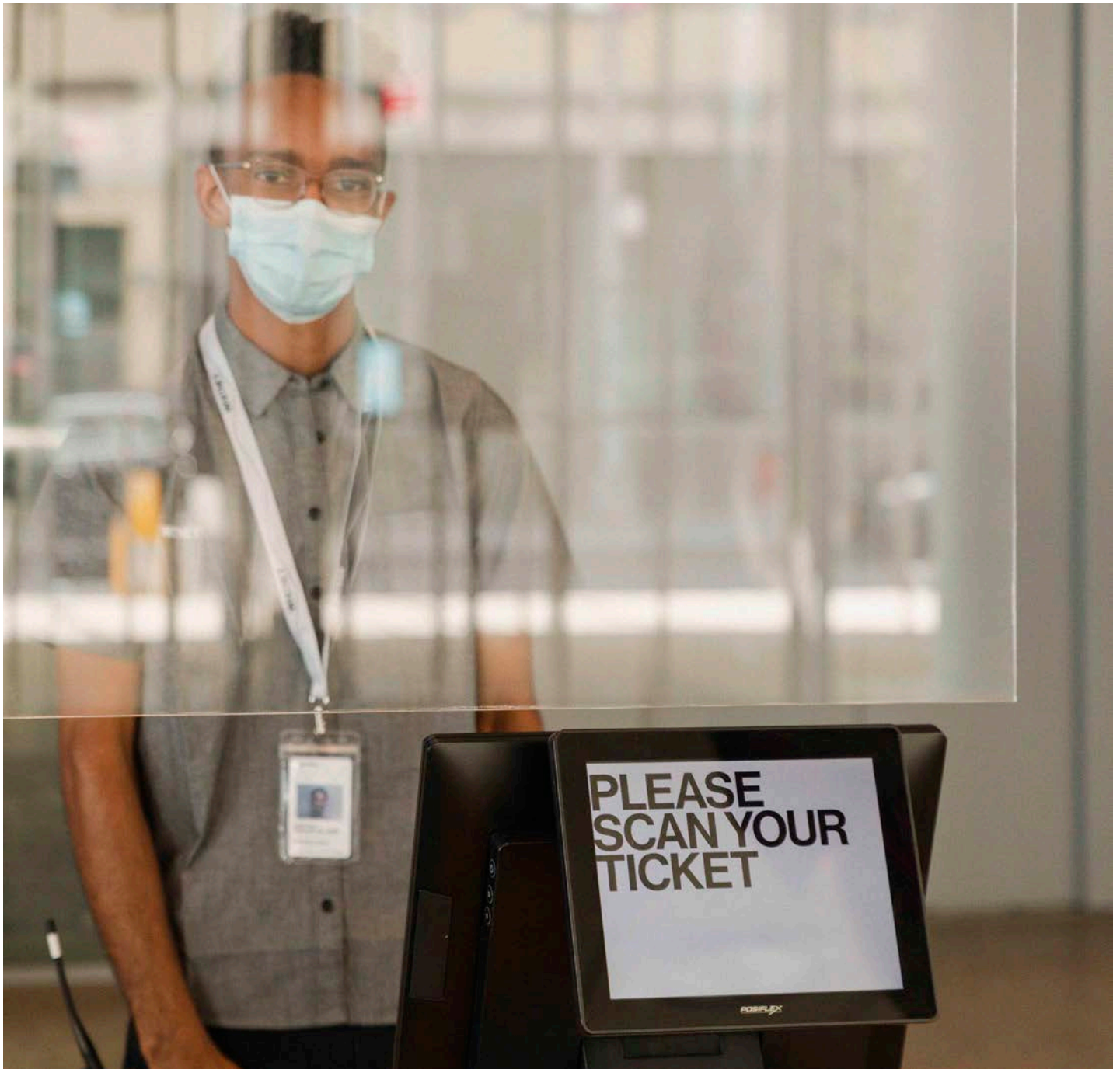
- While we wait in line, Museum staff will check our temperature with a contactless thermal camera. If I have a fever, a staff member will politely ask me to leave and return at another time.

Ticket scanners

- To reduce contact between staff and visitors, I will hold my ticket up to the ticket scanner.

Plexiglass at Visitor Services Desk

- A see-through barrier at the Visitor Services Desk will ensure the health of the Whitney staff and me.



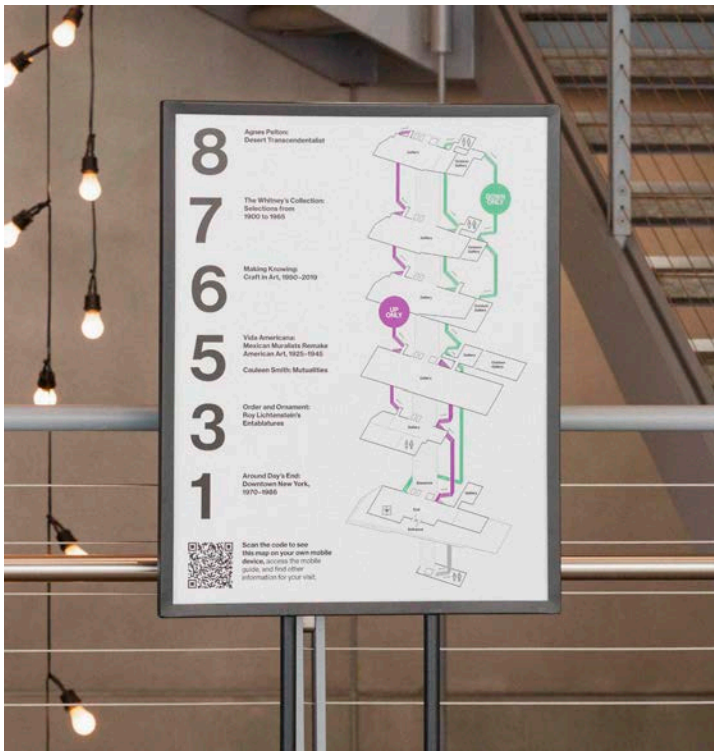
Whitney Museum of American Art. Photograph by Ryan Lowry

We can ask someone at the Visitor Services Desk if we need to borrow a wheelchair or a large print version of the wall labels. Service Animals are welcome at the Whitney.



Installation view of *Vida Americana: Mexican Muralists Remake American Art, 1925–1945* (Whitney Museum of American Art, New York, February 17, 2020–January 31, 2021). Photograph by Ryan Lowry

Now it's time to go see some art.



8
7
6
5
3
1

Agnes Falson:
Desert Transcendentalist

The Whitney's Collection:
Selections from
1900 to 1969

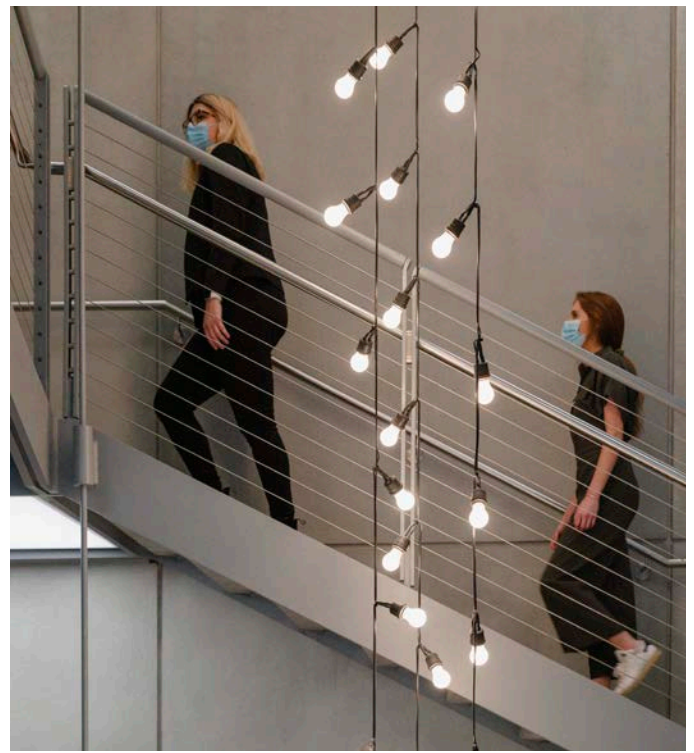
Making Knowledge
Court & Art, 1990-2019

Vida Americana:
Mexican Murals Revisited
American Art, 1920-1945

Order and Ornament:
Roy Lichtenstein's
Enfances

Around Day's End:
Downtown New York,
1970-1989

Scan the code to see
this map on your own mobile
device, access the mobile
guide, and find other
information for your visit.



Whitney Museum of American Art. Photograph by Ryan Lowry

To move around the building, we will take the stairs or the elevator. Visitors with disabilities, seniors, pregnant visitors, and visitors with strollers are given preference for the elevator.

Every route through the museum is a one-way route. This means we can go forward, but we can't retrace our steps.

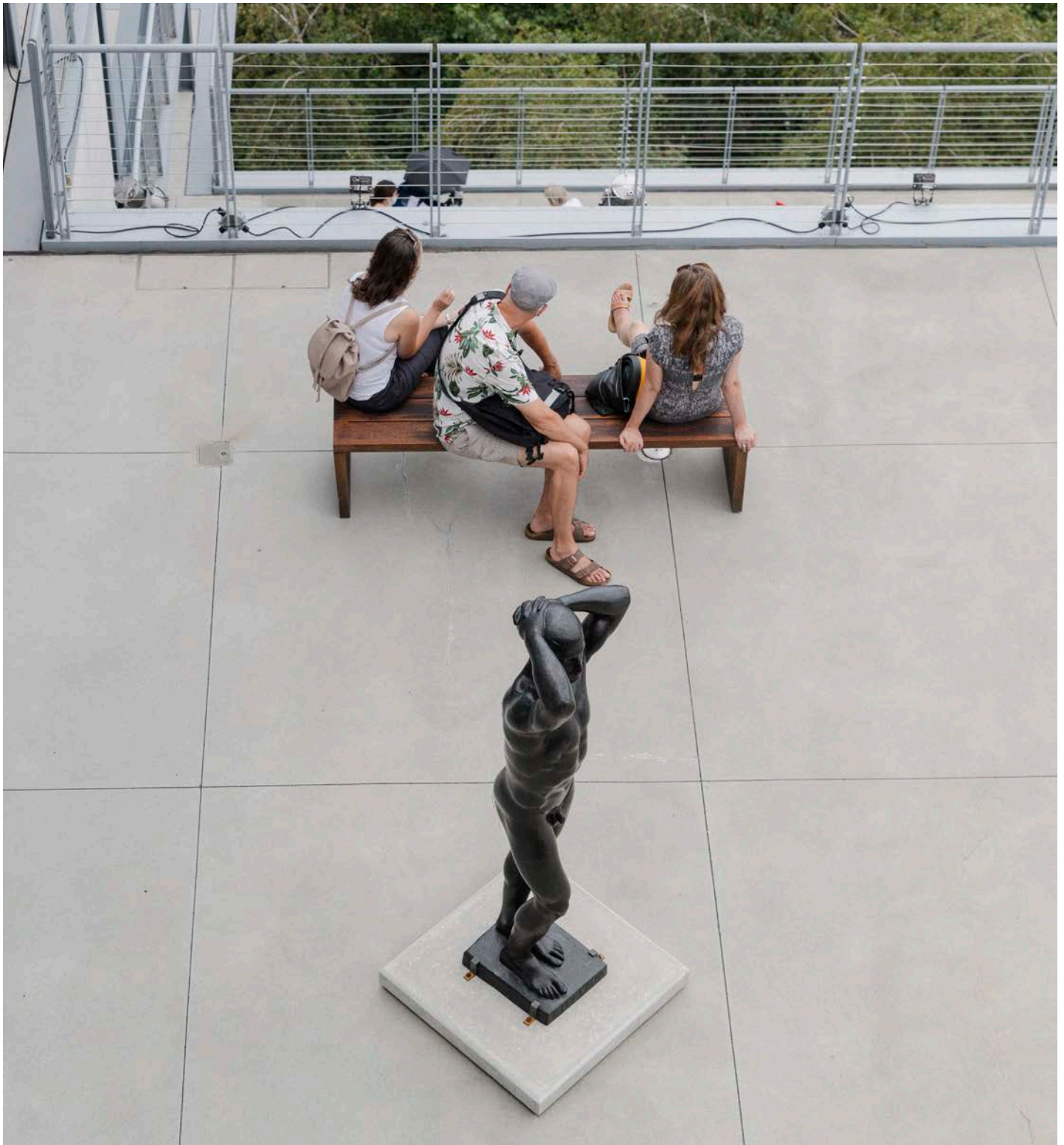
If we take the stairs, we will go in the same direction as everybody else and maintain six feet's distance from other visitors. We will avoid stopping on the stairs to chat, because we don't want to cause crowding.



Installation view of *Vida Americana: Mexican Muralists Remake American Art, 1925-1945* (Whitney Museum of American Art, New York, February 17, 2020-January 31, 2021). Photograph by Ryan Lowry

In the gallery we will:

- Wear our face coverings
- Maintain six feet's distance from other visitors outside of our party
- Not touch the artwork
- Not bring any food or drink
- Speak quietly and listen to all staff and security officers
- Wash your hands or use hand sanitizer frequently



Whitney Museum of American Art. Photograph by Ryan Lowry

All art looks different and can include paintings, collages, sculptures, installations, videos, and even sound. It is fun to see what artists make!



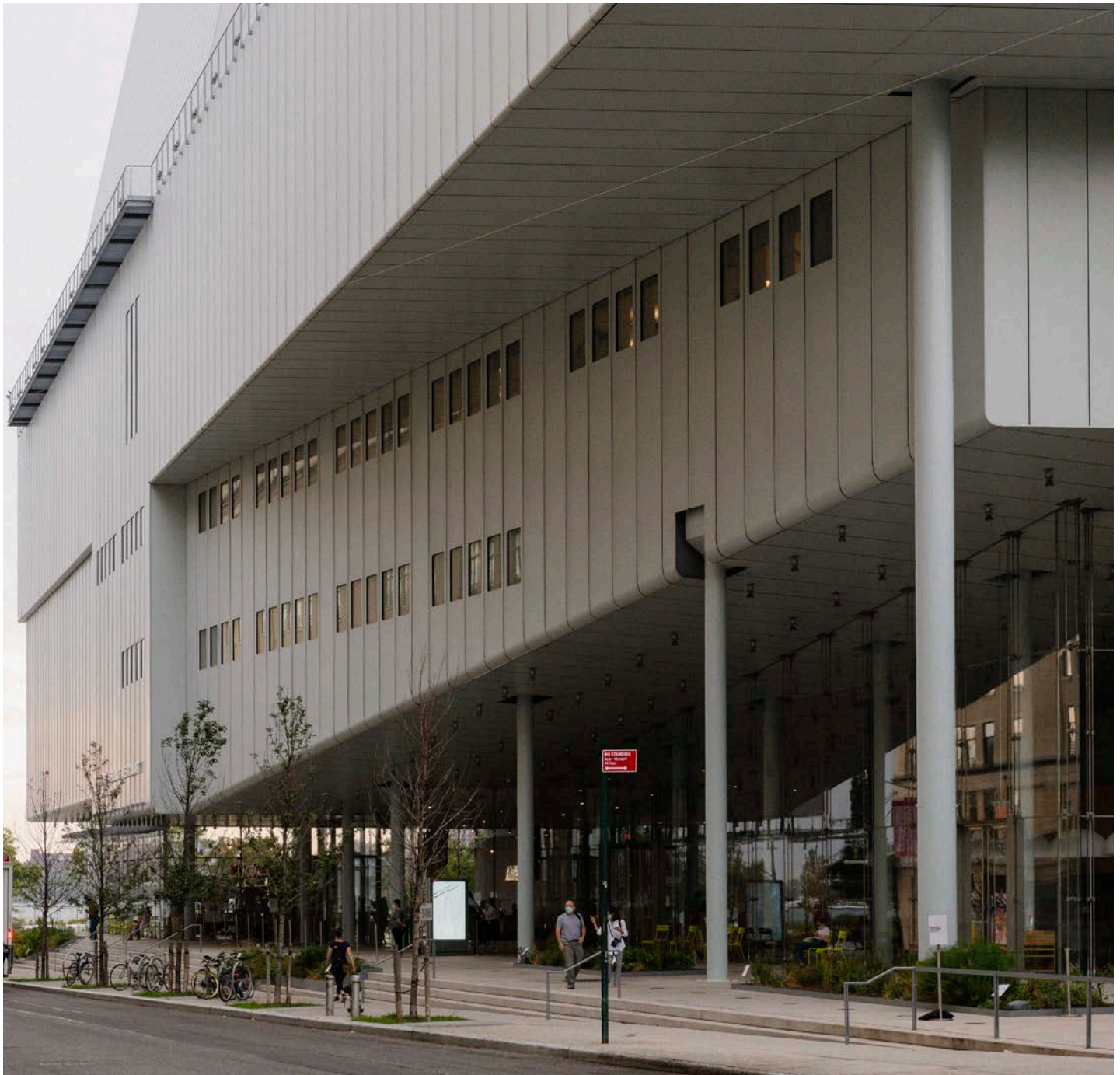
Installation view of *Vida Americana: Mexican Muralists Remake American Art, 1925–1945* (Whitney Museum of American Art, New York, February 17, 2020–January 31, 2021). Photograph by Ryan Lowry

Security officers in suits and museum staff in uniforms will be available to offer assistance. All staff will be wearing face coverings.



Whitney Museum of American Art. Photograph by Ryan Lowry

Accessible restrooms are located on Floors -1, 3, 7, and 8. Single user/all gender restrooms are located on Floors -1, 3, and 8.



Whitney Museum of American Art. Photograph by Ryan Lowry

When we are done with our visit, we will exit the building the same way we entered. Thanks for visiting the Whitney!

HERE'S HOW TO WHITNEY FROM HOME

Even in uncertain times, there are no limits to the creative spirit. It's what makes us human.

So while our physical Museum is temporarily closed to the public, know that the spirit of the Whitney is open to all—and we're committed to connecting you to inspiration, knowledge, and a sense of community through art.

That's why we're bringing the Whitney to you with our new series of online events. From live screenings of video art to art history lessons and artmaking classes taught by our team of dedicated educators, there's something on offer to spark moments of creativity and learning for everyone.

We've also laid out some of the best ways to explore American art of the twentieth century to today across our website and social media channels. Start with a journey through our online collection, revisit some of your favorite Whitney exhibitions, and enjoy video and audio content that will bring you closer to the stories behind the art and artists that we at the Whitney hold so dear.

Follow all of our digital activities using the hashtag [#WhitneyFromHome](#), or sign up for our newsletter at the bottom of this page. We look forward to connecting with you.

Even after we leave the Whitney, we can stay connected from home!

Here are some ways to engage with the Whitney remotely

- Use our Mobile guide with information about the works on view in the Museum. A QR code will be available throughout the Museum and you can also access the [guide online](#)
- Please check out our [online programs](#)

**Whitney Museum
of American Art**
99 Gansevoort Street
New York, NY 10014